

## MYPT1 pSer909 (mouse; residues 903-917), pAb

Alternate Names: Protein Phosphatase 1, Regulatory Subunit 12A, PPP1R12A, Myosin Phosphate target subunit 1

Cat. No. 68-0046-100  
Lot. No. 30285

Quantity: 100 µg  
Storage: -20°C

FOR RESEARCH USE ONLY

NOT FOR USE IN HUMANS

CERTIFICATE OF ANALYSIS

Page 1 of 2

This antibody was developed and validated by the Medical Research Council Protein Phosphorylation and Ubiquitylation Unit (University of Dundee, Dundee, UK).

### Background

Protein ubiquitylation and protein phosphorylation are the two major mechanisms that regulate the functions of proteins in eukaryotic cells. However, these different post-translational modifications do not operate independently of one another, but are frequently interlinked to enable biological processes to be controlled in a more complex and sophisticated manner. Studying how protein phosphorylation events control the ubiquitin system and how ubiquitylation regulates protein phosphorylation has become a focal point of the study of cell regulation and human disease. The mammalian MYPT family consists of the products of five genes, denoted MYPT1, MYPT2, MBS85, MYPT3 and TIMAP (Grassie *et al.*, 2011). Myosin phosphatase (MP) activity, which regulates smooth muscle relaxation, is regulated by the phosphorylation of its regulatory subunit, myosin phosphatase targeting subunit 1 (MYPT1) (Cheng *et al.*, 2013). Cloning of human MYPT1 was first described by Takahashi *et al.* (1997). An example of the interplay between phosphorylation, ubiquitylation, and methylation, has been highlighted in a recent study showing that MYPT1 can be methylated *in vitro* and *in vivo* by histone lysine methyltransferase SETD7 and demethylated by histone demethylase LSD1. LSD1 silencing increased MYPT1 protein levels, decreasing the steady state level of phosphorylated retinoblastoma 1 (RB1; Ser

### Physical Characteristics

**Quantity:** 100 µg

**Concentration:** to be provided on shipping

**Source:** sheep polyclonal antibody

**Immunogen:** mouse MYPT1 (residues 903-917) [RLLGRSA(pS)YSYLEDRK]

**Purification:** affinity-purified against phospho peptide

**Formulation:** phosphate-buffered saline

**Specificity:** detects MYPT1 at ~130 kDa

**Reactivity:** mouse

**Species cross reactivity:** human

**Stability/Storage:** 12 months at -20°C; aliquot as required

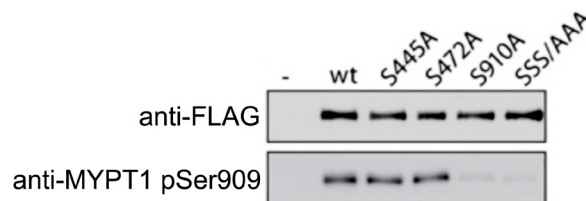
### Research Applications and Quality Assurance

#### Western Immunoblotting:

use 1 µg/ml: add 10 µg of the non-phosphorylated form of the peptide immunogen (Cat# 68-1007-001 provided) to your immunoblotting incubation per 1 µg of polyclonal antibody in order to deplete any non-phospho specific polyclonal antibodies present.

#### Immunoprecipitation:

not tested



#### Western Blotting Analysis:

Following the transfection of HEK293 cells with either FLAG-tagged wild-type (wt) MYPT1 or the indicated mutant versions of MYPT1 (also FLAG-tagged) - both human MYPT1 sequences, cells were lysed and immunoprecipitation was performed using a commercially available anti-FLAG antibody. Western blotting was subsequently performed probing with a commercially available anti-FLAG antibody or the anti-MYPT1 pSer909 antibody (Cat# 68-0046-100). A band was detected from FLAG-tagged immunoprecipitated cell lysates except those expressing the S910A mutant (S910 is the equivalent phosphorylation site in the human MYPT1 sequence as S909 in the mouse sequence) and the triple mutant (SSS/AAA) when probed with 1.0 µg/ml of anti MYPT1 pSer909 mouse polyclonal antibody (Cat# 68-0046-100).

Continued on page 2



www.ubiquigent.com  
Dundee, Scotland, UK

#### ORDERS / SALES SUPPORT

International: +1-617-245-0020  
US Toll-Free: 1-888-4E1E2E3 (1-888-431-3233)  
Email: sales.support@ubiquigent.com

#### UK HQ and TECHNICAL SUPPORT

International: +44 (0) 1382 381147 (9AM-5PM UTC)  
US/Canada: +1-617-245-0020 (9AM-5PM UTC)  
Email: tech.support@ubiquigent.com

Email services@ubiquigent.com for enquiries regarding compound profiling and/or custom assay development services.

© Ubiquigent 2014. Unless otherwise noted, Ubiquigent, Ubiquigent logo and all other trademarks are the property of Ubiquigent, Ltd.

Limited Terms of Use: For research use only. Not for use in humans or for diagnostics. Not for distribution or resale in any form, modification or derivative OR for use in providing services to a third party (e.g. screening or profiling) without the written permission of Ubiquigent, Ltd.

Lot-specific COA version tracker: v1.0.0



## MYPT1 pSer909 (mouse; residues 903-917), pAb

**Alternate Names:** Protein Phosphatase 1, Regulatory Subunit 12A, PPP1R12A, Myosin Phosphate target subunit 1

**Cat. No.** 68-0046-100  
**Lot. No.** 30285

**Quantity:** 100 µg  
**Storage:** -20°C

FOR RESEARCH USE ONLY

NOT FOR USE IN HUMANS

CERTIFICATE OF ANALYSIS

Page 2 of 2

## Background

Continued from page 1

807/811) and reducing E2F activity. Demethylation of MYPT1 has been shown to increase the ubiquitin proteasome pathway-dependent turnover of MYPT1. This study offers a novel cell cycle regulatory mechanism mediated by methylation/demethylation dynamics, and also reveals the significance of LSD1 overexpression in human carcinogenesis (Cho *et al.*, 2011).

### Antibody Production:

Anti-MYPT1 pSer909 (mouse) polyclonal antibody was raised in sheep against MYPT1 (residues 903-917 of mouse MYPT1; Ser909 phosphorylated). The antibodies were purified by the Medical Research Council Protein Phosphorylation and Ubiquitylation Unit (MRC-PPU, University of Dundee, Dundee, U.K.) by affinity purification of the anti-MYPT1 pAbs from the sheep serum using a GST-tagged antigen-agarose column. Anti-MYPT1 pSer909 (mouse) pAb was sourced by Ubiquigent directly from the MRC-PPU.

### General References:

Cheng JC, Cheng HP, Tsai IC and Jiang MJ (2013) ROS-mediated downregulation of MYPT1 in smooth muscle cells: a potential mechanism for the aberrant contractility in atherosclerosis. *Lab Invest* **93**, 422-433.

Cho HS, Suzuki T, Dohmae N, Hayami S, Unoki M, Yoshimatsu M, *et al.* (2011) Demethylation of RB regulator MYPT1 by histone demethylase LSD1 promotes cell cycle progression in cancer cells. *Cancer Res* **71**, 655-660.

Grassie ME, Moffat LD, Walsh MP and MacDonald JA (2011) The myosin phosphatase targeting protein (MYPT) family: a regulated mechanism for achieving substrate specificity of the catalytic subunit of protein phosphatase type 1delta. *Arch Biochem Biophys* **510**, 147-159.

Takahashi N, Ito M, Tanaka J, Nakano T, Kaibuchi K, Odai H, *et al.* (1997) Localization of the gene coding for myosin phosphatase, target subunit 1 (MYPT1) to human chromosome 12q15-q21. *Genomics* **44**, 150-152.



[www.ubiquigent.com](http://www.ubiquigent.com)  
Dundee, Scotland, UK

### ORDERS / SALES SUPPORT

**International:** +1-617-245-0020  
**US Toll-Free:** 1-888-4E1E2E3 (1-888-431-3233)  
**Email:** [sales.support@ubiquigent.com](mailto:sales.support@ubiquigent.com)

### UK HQ and TECHNICAL SUPPORT

**International:** +44 (0) 1382 381147 (9AM-5PM UTC)  
**US/Canada:** +1-617-245-0020 (9AM-5PM UTC)  
**Email:** [tech.support@ubiquigent.com](mailto:tech.support@ubiquigent.com)

Email [services@ubiquigent.com](mailto:services@ubiquigent.com) for enquiries regarding compound profiling and/or custom assay development services.

© Ubiquigent 2014. Unless otherwise noted, Ubiquigent, Ubiquigent logo and all other trademarks are the property of Ubiquigent, Ltd.

**Limited Terms of Use:** For research use only. Not for use in humans or for diagnostics. Not for distribution or resale in any form, modification or derivative OR for use in providing services to a third party (e.g. screening or profiling) without the written permission of Ubiquigent, Ltd.

Lot-specific COA version tracker: v1.0.0