

# UBE2Q2 [6His-tagged]

## E2 – Ubiquitin Conjugating Enzyme

Alternate Names: DKFZp762C143, EC 6.3.2.19, Ubiquitin carrier protein Q2, Ubiquitin-protein ligase Q2

Cat. No. **62-0051-020**  
Lot. No. **1379**

Quantity: 20 µg  
Storage: -70°C

FOR RESEARCH USE ONLY

NOT FOR USE IN HUMANS



CERTIFICATE OF ANALYSIS Page 1 of 2

### Background

The enzymes of the ubiquitylation pathway play a pivotal role in a number of cellular processes including the regulated and targeted proteasomal degradation of substrate proteins. Three classes of enzymes are involved in the process of ubiquitylation; activating enzymes (E1s), conjugating enzymes (E2s) and protein ligases (E3s). UBE2Q2 is a member of the E2 conjugating enzyme family. The cloning of human UBE2Q2 was first described by Crawford and Piwnicka-Worms. (2001). UBE2Q2 has been found to be up-regulated in 85% of head and neck squamous cell carcinoma tumours, with an increase of 2.4-fold compared to normal tissue. Immunohistochemistry and *in situ* hybridization analysis on tumour tissue sections has revealed strong signals in the tumour cell islets, invasive epithelia, and dysplastic regions (Seghatoleslam *et al.*, 2006). UBE2Q2 has been identified as a novel oncosuppressor that inhibits tumour growth and it is thought it could function as a novel diagnostic tool and potential therapeutic target for head and neck squamous cell carcinoma (Maeda *et al.*, 2009). UBE2Q2 may play a role in cytoskeleton structure and regulation, as actin and 6 actin-binding proteins have been shown to interact with UBE2Q2 (Seghatoleslam *et al.*, 2006). Inhibition of UBE2Q2 following treatment of HeLa cells with Microtu-

### Physical Characteristics

**Species:** human

**Source:** *E. coli* expression

**Quantity:** 20 µg

**Concentration:** 1 mg/ml

**Formulation:** 50 mM HEPES pH 7.5, 150 mM sodium chloride, 2 mM dithiothreitol, 10% glycerol

**Molecular Weight:** ~45 kDa

**Purity:** >85% by InstantBlue™ SDS-PAGE

**Stability/Storage:** 12 months at -70°C; aliquot as required

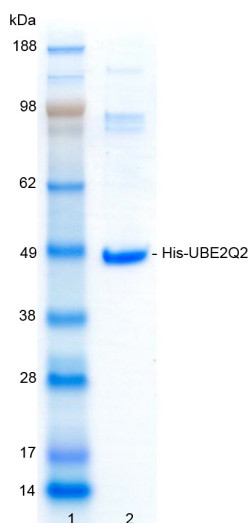
### Protein Sequence:

**MGSSHHHHHSSGLEVLFGQPGSM SVSGL**  
KAE LKFLASIFDKNHERFRI VSWKLDLH CQ  
FLVPQOGSPHSLPPLTLHCNITESYPSSSPI  
WFDVSEDPNLT SVLERLEDTKNNNLLRQQLKW  
L I C E L C S L Y N L P K H L D V E M L D Q P L P T G Q N G T  
T E E V T S E E E E E E E E M A E D I E D L D H Y E M K E E E P  
I S G K K S E D E G I E K E N L A I L E K I R K T Q R Q D H L N  
G A V S G S V Q A S D R L M K E L R D I Y R S Q S Y K T G I  
Y S V E L I N D S L Y D W H V K L Q K V D P D S P L H S D L Q  
I L K E K E G I E Y I L L N F S F K D N F P F D P P F V R V  
V L P V L S G G Y V L G G G A L C M E L L T K Q G W S S A Y  
S I E S V I M Q I N A T L V K G K A R V Q F G A N K N Q Y N  
L A R A Q Q S Y N S I V Q I H E K N G W Y T P P K E D G

Tag (**bold text**): N-terminal His  
Protease cleavage site: PreScission™ (LEVLFGQ▼GP)  
UBE2Q2 (regular text): Start **bold italics** (amino acid residues 1-375)  
Accession number: AAH34342.1

### Quality Assurance

**Purity:**  
4-12% gradient SDS-PAGE  
InstantBlue™ staining  
Lane 1: MW markers  
Lane 2: 1 µg His-UBE2Q2



### Protein Identification:

Confirmed by mass spectrometry.

### E2-Ubiquitin Thioester Loading Assay:

The activity of His-UBE2Q2 was validated by loading E1 UBE1 activated ubiquitin onto the active cysteine of the His-UBE2Q2 E2 enzyme via a transthiolation reaction. Incubation of the UBE1 and His-UBE2Q2 enzymes in the presence of ubiquitin and ATP at 30°C was compared at two time points, T<sub>0</sub> and T<sub>10</sub> minutes. Sensitivity of the ubiquitin/His-UBE2Q2 thioester bond to the reducing agent DTT was confirmed.

Continued on page 2



www.ubiquigent.com  
Dundee, Scotland, UK

### ORDERS / SALES SUPPORT

International: +1-617-245-0003  
US Toll-Free: 1-888-4E1E2E3 (1-888-431-3233)  
Email: sales.support@ubiquigent.com

### UK HQ and TECHNICAL SUPPORT

International: +44 (0) 1382 381147 (9AM-5PM UTC)  
US/Canada: +1-617-245-0020 (9AM-5PM UTC)  
Email: tech.support@ubiquigent.com

Email services@ubiquigent.com for enquiries regarding compound profiling and/or custom assay development services.

© Ubiquigent 2011. Unless otherwise noted, Ubiquigent, Ubiquigent logo and all other trademarks are the property of Ubiquigent, Ltd.

Limited Terms of Use: For research use only. Not for use in humans or for diagnostics. Not for distribution or resale in any form, modification or derivative OR for use in providing services to a third party (e.g. screening or profiling) without the written permission of Ubiquigent, Ltd.

Lot-specific COA version tracker: v1.0.0

# UBE2Q2 [6His-tagged]

## E2 – Ubiquitin Conjugating Enzyme

**Alternate Names:** DKFZp762C143, EC 6.3.2.19, Ubiquitin carrier protein Q2, Ubiquitin-protein ligase Q2

**Cat. No.** 62-0051-020  
**Lot. No.** 1379

**Quantity:** 20 µg  
**Storage:** -70°C



FOR RESEARCH USE ONLY

NOT FOR USE IN HUMANS

CERTIFICATE OF ANALYSIS Page 2 of 2

## Background

Continued from page 1

bule Inhibiting Agent (MIA) causes mitotic arrest and increased cytotoxicity, effects only observed in the absence of MIA suggesting UBE2Q2 is only involved in this response rather than having a more general role in mitosis (Banerjee *et al.*, 2007).

### References:

Banerjee S, Brooks WS, Crawford DF (2007) Inactivation of the ubiquitin conjugating enzyme UBE2Q2 causes a prophase arrest and enhanced apoptosis in response to microtubule inhibiting agents. *Oncogene* **26**, 6509-17.

Crawford DF, Piwnica-Worms H (2001) The G(2) DNA damage checkpoint delays expression of genes encoding mitotic regulators. *J Biol Chem* **276**, 37166-77.

Maeda H, Miyajima N, Kano S, Tsukiyama T, Okumura F, Fukuda S, Hatakeyama S (2009) Ubiquitin-conjugating enzyme UBE2Q2 suppresses cell proliferation and is down-regulated in recurrent head and neck cancer. *Mol Cancer Res* **7**, 1553-62.

Seghatoleslam A, Zambrano A, Millon R, Ganguli G, Argentini M, Cromer A, Abecassis J, Wasylyk B (2006) Analysis of a novel human gene, LOC92912, over-expressed in hypopharyngeal tumours. *Biochem Biophys Res Commun* **339**, 422-9.



[www.ubiquigent.com](http://www.ubiquigent.com)  
Dundee, Scotland, UK

### ORDERS / SALES SUPPORT

**International:** +1-617-245-0003  
**US Toll-Free:** 1-888-4E1E2E3 (1-888-431-3233)  
**Email:** [sales.support@ubiquigent.com](mailto:sales.support@ubiquigent.com)

### UK HQ and TECHNICAL SUPPORT

**International:** +44 (0) 1382 381147 (9AM-5PM UTC)  
**US/Canada:** +1-617-245-0020 (9AM-5PM UTC)  
**Email:** [tech.support@ubiquigent.com](mailto:tech.support@ubiquigent.com)

Email [services@ubiquigent.com](mailto:services@ubiquigent.com) for enquiries regarding compound profiling and/or custom assay development services.

© Ubiquigent 2011. Unless otherwise noted, Ubiquigent, Ubiquigent logo and all other trademarks are the property of Ubiquigent, Ltd.

**Limited Terms of Use:** For research use only. Not for use in humans or for diagnostics. Not for distribution or resale in any form, modification or derivative OR for use in providing services to a third party (e.g. screening or profiling) without the written permission of Ubiquigent, Ltd.

Lot-specific COA version tracker: v1.0.0