

Ubiquitin (pSer57)

Modifying Protein

Alternate Names: Ribosomal Protein S27a, CEP80, UBA80, UBCEP1, UBCEP80, HUBCEP80, RPS27A

Cat. No. 60-0208-050
Lot. No. 30385

Quantity: 50 µg
Storage: -70°C

FOR RESEARCH USE ONLY

NOT FOR USE IN HUMANS



CERTIFICATE OF ANALYSIS Page 1 of 2

Background

Ubiquitin (Ub) is a highly conserved 76 amino-acid protein found throughout eukaryotic cells. A vast number of cellular processes, including targeted protein degradation, cell cycle progression, DNA repair, protein trafficking, inflammatory response, virus budding, and receptor endocytosis, are regulated by Ub-mediated signalling; where the target protein is tagged by single or multi-monomeric Ub (monomeric Ub attached to multiple sites on the substrate) or a polymeric chain of Ubs (Fushman and Walker, 2010). More recently the demonstration that ubiquitin itself can be modified through phosphorylation by the kinase PTEN Induced putative Kinase1 (PINK1) provides a major breakthrough linking the two most important signalling pathways in cells; phosphorylation and ubiquitylation (Kane *et al.*, 2014; Kazlauskaite *et al.*, 2014; Koyano *et al.*, 2014). Several studies have revealed that PINK1 directly phosphorylates ubiquitin on Ser65 a residue that is also shared by the Parkin Ubl domain (Kane *et al.*, 2014; Kazlauskaite *et al.*, 2014; Koyano *et al.*, 2014). Parkin is activated by Ser65 phosphorylated ubiquitin in a manner which is independent of ubiquitin's ability to be conjugated. The mechanism of Parkin priming and activation is thought to occur through a conformational change induced by PINK1 phosphorylation on Ser65 followed by the binding of PINK1 Ser65 phosphorylated ubiquitin on the RING1 domain which optimises the ubiquityla-

Continued on page 2

Physical Characteristics

Species: human

Source: synthetic

Quantity: 50 µg

Concentration: 1 mg/ml

Formulation: 50 mM HEPES pH 7.5, 150 mM sodium chloride, 2 mM dithiothreitol, 10% glycerol, 2% DMSO

Molecular Weight: 8.645 kDa

Purity: >98% by InstantBlue™ SDS-PAGE

Stability/Storage: 12 months at -70°C; aliquot as required

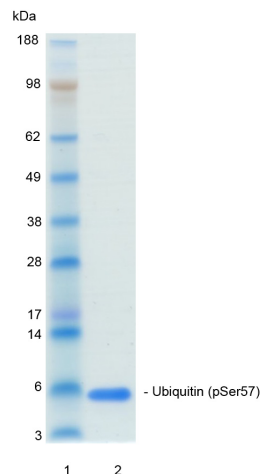
Protein Sequence:

**MQIFVKTLTGKTITLEVEPSDTIENVKAKIQDKE
GIPPDQQRLLIFAGKQLEDGRTL (p S) DY
NIQKESTLHLVLRGG**

Ubiquitin (regular text): Start ***bold italics***
(amino acid residues 1-76)
Phosphorylated Serine 57 (**bold in brackets**)
Accession number: P62990.1

Quality Assurance

Purity:
4-12% gradient SDS-PAGE
InstantBlue™ staining
Lane 1: MW markers
Lane 2: 1 µg Ubiquitin (pSer57)



Protein Identification:

Confirmed by mass spectrometry.

UbiQ

Phosphorylated ubiquitin and derivatives are offered by Ubiquigent under an exclusive license from UbiQ Bio BV, Amsterdam, the Netherlands.



www.ubiquigent.com
Dundee, Scotland, UK

ORDERS / SALES SUPPORT

International: +1-617-245-0003
US Toll-Free: 1-888-4E1E2E3 (1-888-431-3233)
Email: sales.support@ubiquigent.com

UK HQ and TECHNICAL SUPPORT

International: +44 (0) 1382 381147 (9AM-5PM UTC)
US/Canada: +1-617-245-0020 (9AM-5PM UTC)
Email: tech.support@ubiquigent.com

Email services@ubiquigent.com for enquiries regarding compound profiling and/or custom assay development services.

© Ubiquigent 2015. Unless otherwise noted, Ubiquigent, Ubiquigent logo and all other trademarks are the property of Ubiquigent, Ltd.

Limited Terms of Use: For research use only. Not for use in humans or for diagnostics. Not for distribution or resale in any form, modification or derivative OR for use in providing services to a third party (e.g. screening or profiling) without the written permission of Ubiquigent, Ltd.

Lot-specific COA version tracker: v1.0.0

Ubiquitin (pSer57)

Modifying Protein

Alternate Names: Ribosomal Protein S27a, CEP80, UBA80, UBCEP1, UBCEP80, HUBCEP80, RPS27A

Cat. No. 60-0208-050
Lot. No. 30385

Quantity: 50 µg
Storage: -70°C

FOR RESEARCH USE ONLY

NOT FOR USE IN HUMANS



CERTIFICATE OF ANALYSIS Page 2 of 2

Background

Continued from page 1

tion activity of Parkin (Kazlauskaitė *et al.*, 2014; Koyano *et al.*, 2014). Phospho-ubiquitin may play other roles in regulating Parkin but more generally the identification of phospho-ubiquitin as a second messenger in signalling pathways could reveal the existence of further ubiquitin phosphatases and lead to the discovery of additional kinase and ubiquitin related substrates (Sauve and Gehring, 2014).

Phosphoproteomic studies have identified the presence of several phosphorylated peptides demonstrating homology to proteins of the Ubiquitin Proteasome Pathway (UPP) these include ubiquitin (pSer57 being among those identified), ubiquitin like modifiers and proteins containing ubiquitin binding domains (Bennetzen *et al.*, 2010; Bian *et al.*, 2014; Moritz *et al.*, 2010; Sharma *et al.*, 2014).

Ubiquitin (pSer57) (Cat# 60-0208-050) is a phosphorylated synthetically made ubiquitin which may be used alongside Biotin-Ahx-Ubiquitin (pSer57) (Cat# 60-0205-050) and the non-phosphorylated control Ubiquitin (synthetic) (Cat# 60-0200-050).

References:

Bennetzen MV, Larsen DH, Bunkenborg J, Bartek J, Lukas J and Andersen JS (2010) Site-specific phosphorylation dynamics of the nuclear proteome during the DNA damage response. *Mol Cell Proteomics* **9**, 1314-1323.

Bian Y, Song C, Cheng K, Dong M, Wang F, *et al.* (2014) An enzyme assisted RP-RPLC approach for in-depth analysis of human liver phosphoproteome. *J Proteomics* **16**, 253-62.

Fushman D and Walker O (2010) Exploring the linkage dependence of polyubiquitin conformations using molecular modeling. *Journal of Molecular Biology* **395**, 803-814.

Kane LA, Lazarou M, Fogel AI, Li Y, Yamano K, Sarraf SA, *et al.* (2014) PINK1 phosphorylates ubiquitin to activate Parkin E3 ubiquitin ligase activity. *J Cell Biol* **205**, 143-153.

Kazlauskaitė A, Kondapalli C, Gourlay R, Campbell DG, Ritoro MS, Hofmann K, *et al.* (2014) Parkin is activated by PINK1-dependent phosphorylation of ubiquitin at Ser65. *Biochem J* **460**, 127-139.

Kettenbach AN, Schweppe DK, Faherty BK, Pechenick D, Pletnev AA and Gerber SA (2011) Quantitative phosphoproteomics identifies substrates and functional modules of Aurora and Polo-like kinase activities in mitotic cells. *Sci Signal* **4**, rs5.

Koyano F, Okatsu K, Kosako H, Tamura Y, Go E, Kimura M, *et al.* (2014) Ubiquitin is phosphorylated by PINK1 to activate parkin. *Nature* **510**, 162-166.

Sauve V and Gehring K (2014) Phosphorylated ubiquitin: a new shade of PINK1 in Parkin activation. *Cell Res* **24**, 1025-6.

Sharma K, D'Souza RC, Tyanova S, Schaab C, Wisniewski JR, Cox J, *et al.* (2014) Ultradeep human phosphoproteome reveals a distinct regulatory nature of Tyr and Ser/Thr-based signaling. *Cell Rep* **8**, 1583-1594.



www.ubiquigent.com
Dundee, Scotland, UK

ORDERS / SALES SUPPORT

International: +1-617-245-0003
US Toll-Free: 1-888-4E1E2E3 (1-888-431-3233)
Email: sales.support@ubiquigent.com

UK HQ and TECHNICAL SUPPORT

International: +44 (0) 1382 381147 (9AM-5PM UTC)
US/Canada: +1-617-245-0020 (9AM-5PM UTC)
Email: tech.support@ubiquigent.com

Email services@ubiquigent.com for enquiries regarding compound profiling and/or custom assay development services.

© Ubiquigent 2015. Unless otherwise noted, Ubiquigent, Ubiquigent logo and all other trademarks are the property of Ubiquigent, Ltd.

Limited Terms of Use: For research use only. Not for use in humans or for diagnostics. Not for distribution or resale in any form, modification or derivative OR for use in providing services to a third party (e.g. screening or profiling) without the written permission of Ubiquigent, Ltd.

Lot-specific COA version tracker: v1.0.0