

Anti human Robo1 mouse monoclonal antibody

Product Details	
Product Code	Pab-02
Clone No.	B5209B
Lot.	0225002
Form	Liquid
Concentration	1 mg/mL
Size	100 µL
Host/Isotype	Mouse/IgG2b
Class	Monoclonal
Conjugate	Unconjugated
Immunogen	Full length of human ROBO1
Specificity	Human
Purification	Affinity chromatography
Storage buffer	PBS(-), sterilized
Storage conditions	Store at 4 ° C for short-term use (up to 2 weeks) and at –20 ° C for long-term storage (up to 24 months). Avoid repeated freeze–thaw cycles.
Application	Immunoprecipitation, Western blotting, Flow cytometry
Gene bank	-

This product is for research use only, and is not intended for use in human or veterinary diagnostics or therapeutics.

References

- 1) Kentaro Fujiwara, et al., PLoS One (2015) 10(5): e0125468.
- 2) Takefumi Yamashita, et al., Structure (2019) 27: 519–527.
- 3) Osamu Kusano-Arai, et al., Analytical Biochemistry (2016) 504: 41-49.

PhotoQ3 Inc.

Head Office: B-1 Kojimachi Intelligent Building, 3-5-4 Kojimachi Chiyoda-ku, Tokyo 102-0083, Japan

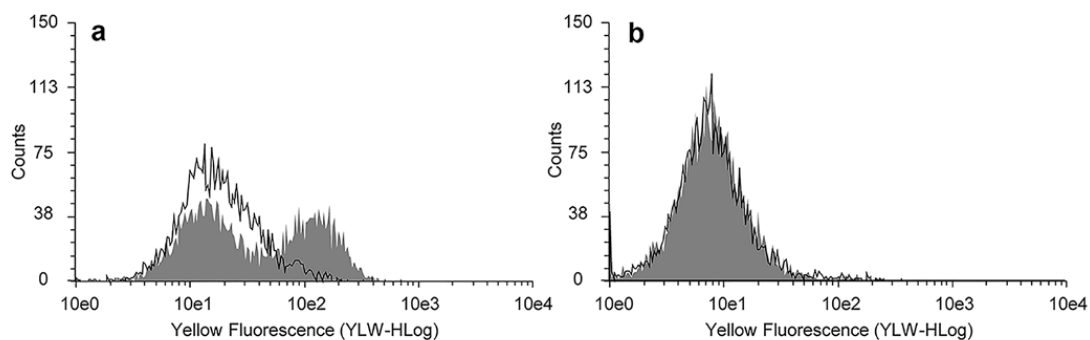
Laboratory: Komaba Research Campus KOL 602, University of Tokyo, 4-6-1 Komaba, Meguro-ku, Tokyo 153-8505, Japan

Tel: 03-5452-5742

URL: <https://photoq3.com>

Application data

Flow cytometry¹⁾



NCI-H69 cells were incubated with B5209B or a negative control antibody at a concentration of 0.3 μ g/ml for 1 hour.

The cells were then washed twice with dilution buffer (1% BSA, 0.1 mM EDTA in PBS) and subsequently incubated with R-phycoerythrin-conjugated anti-mouse IgG (1:200) as a secondary antibody.

A: Anti-ROBO1 antibody (B5209B)

B: Negative control antibody

PhotoQ3 Inc.

Head Office: B-1 Kojimachi Intelligent Building, 3-5-4 Kojimachi Chiyoda-ku, Tokyo 102-0083, Japan

Laboratory: Komaba Research Campus KOL 602, University of Tokyo, 4-6-1 Komaba, Meguro-ku, Tokyo 153-8505, Japan

Tel: 03-5452-5742

URL: <https://photoq3.com>