

Anti human Robo1 mouse monoclonal antibody

Product Details	
Product Code	Pab-01
Clone No.	A7241A
Lot.	0125001
Form	Liquid
Concentration	1 mg/mL
Size	100 µL
Host/Isotype	Mouse/IgG1
Class	Monoclonal
Conjugate	Unconjugated
Immunogen	The first immunoglobulin domain (Ig1; amino acids 22-113) of human ROBO1
Specificity	Human
Purification	Affinity chromatography
Storage buffer	PBS(-), sterilized
Storage conditions	Store at 4 ° C for short-term use (up to 2 weeks) and at –20 ° C for long-term storage (up to 24 months). Avoid repeated freeze–thaw cycles.
Application	Immunohistochemistry, Western blotting
Gene bank	-

This product is for research use only, and is not intended for use in human or veterinary diagnostics or therapeutics.

References

- 1) Hirotaka Ito, *et al.*, Clin Cancer Res (2006) 12 (11): 3257–3264.
- 2) Shuying Jiang, *et al.*, Int J Clin Exp Pathol. (2018) 11(12): 5755–5764.

PhotoQ3 Inc.

Head Office: B-1 Kojimachi Intelligent Building, 3-5-4 Kojimachi Chiyoda-ku, Tokyo 102-0083, Japan

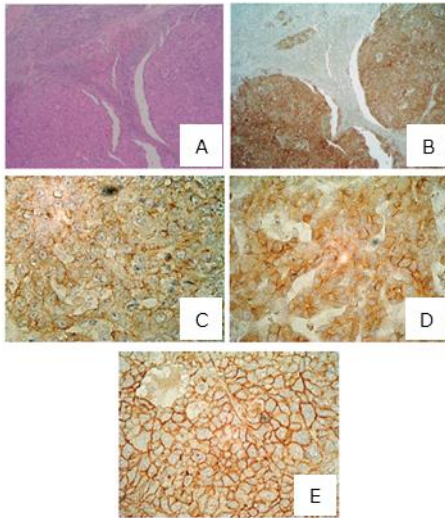
Laboratory: Komaba Research Campus KOL 602, University of Tokyo, 4-6-1 Komaba, Meguro-ku, Tokyo 153-8505, Japan

Tel: 03-5452-5742

URL: <https://photoq3.com>

Application data

a) Immunohistochemistry¹⁾



Paraffin-embedded blocks of hepatocellular carcinoma were sectioned at a thickness of 4 μ m, deparaffinized with xylene, and washed with ethanol.

Antigen retrieval was performed in 10 mmol/L citrate buffer (pH 6) at 121 ° C for 10 minutes, followed by incubation with anti-ROBO1 mAb A7241A (20 μ g/mL) for 1 hour. Secondary detection was carried out using the DAKO EnVision+ kit.

A: Poorly differentiated hepatocellular carcinoma, H&E staining

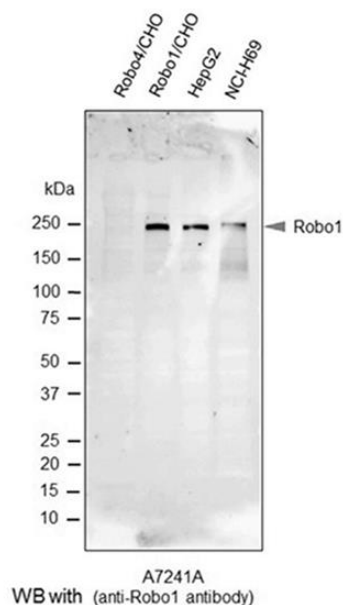
B: Poorly differentiated hepatocellular carcinoma, immunostaining ($\times 40$)

C: Well-differentiated hepatocellular carcinoma, immunostaining ($\times 200$)

D: Moderately differentiated hepatocellular carcinoma, immunostaining ($\times 200$)

E: Poorly differentiated hepatocellular carcinoma, immunostaining ($\times 200$)

b) Western blotting²⁾



Western blot analysis with the anti-Robo1 antibody.

Robo4/CHO (negative control), Robo1/ CHO (positive control), HepG2 and NCI-H69 cells were homogenized in RIPA buffer, and subjected to SDS-PAGE followed by western blot analysis using the A7241A anti-human Robo1 monoclonal anti body (1 ng/ μ L).

PhotoQ3 Inc.

Head Office: B-1 Kojimachi Intelligent Building, 3-5-4 Kojimachi Chiyoda-ku, Tokyo 102-0083, Japan

Laboratory: Komaba Research Campus KOL 602, University of Tokyo, 4-6-1 Komaba, Meguro-ku, Tokyo 153-8505, Japan

Tel: 03-5452-5742

URL: <https://photoq3.com>