

## *Anti-Calbindin (CB-28kD)*

### Product Information:

---

1) <b>Catalog #:</b>	MSFR100390
<b>Item Name:</b>	Calbindin (CB-28KD) pAb (Rb) 20ug
<b>Size :</b>	20µg (400µg/mL)
<b>Species :</b>	Rabbit
<b>Product Code :</b>	Calbindin-Rb-Se0.1
<b>RRID :</b>	AB_2571568
2) <b>Catalog #:</b>	MSFR100400
<b>Item Name:</b>	Calbindin (CB-28KD) pAb (Go) 20ug
<b>Size :</b>	20µg (affinity-purified with antigen polypeptide)
<b>Species :</b>	Goat
<b>Product Code :</b>	Calbindin-Go-Af1040
<b>RRID :</b>	AB_2571569
3) <b>Catalog #:</b>	MSFR100410
<b>Item Name:</b>	Calbindin (CB-28KD) pAb (Go) 50ug
<b>Size :</b>	50µg (affinity-purified with antigen polypeptide)
<b>Species :</b>	Goat
<b>Product Code :</b>	Calbindin-Go-Af1040
<b>RRID :</b>	AB_2571569
4) <b>Catalog #:</b>	MSFR100420
<b>Item Name:</b>	Calbindin (CB-28KD) pAb (GP) 20ug
<b>Size :</b>	20µg (affinity-purified with antigen polypeptide)
<b>Species :</b>	Guinea pig
<b>Product Code :</b>	Calbindin-GP-Af280
<b>RRID :</b>	AB_2571570
5) <b>Catalog #:</b>	MSFR100430
<b>Item Name:</b>	Calbindin (CB-28KD) pAb (GP) 50ug
<b>Size :</b>	50µg (affinity-purified with antigen polypeptide)
<b>Species :</b>	Guinea pig
<b>Product Code :</b>	Calbindin-GP-Af280
<b>RRID :</b>	AB_2571570

---

**Formulation** : Liquid ; 200µg/ml in PBS with 0.05% NaN<sub>3</sub>.(except MSFR100390)

**Storage** : Store at cool temp (2-10°C).

The antibody can be stored at 2-10°C. The antibody can be also aliquoted and stored at -80°C for long-term storage. Avoid repeated freeze-thawing. Non-hazardous. No MSDS required.

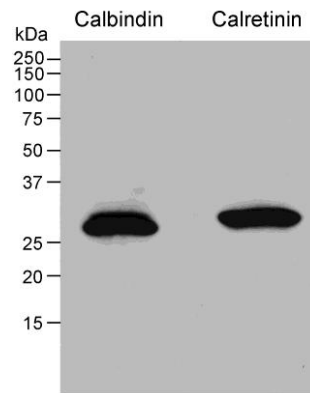
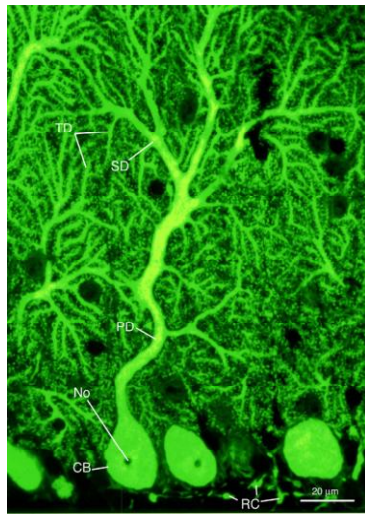
**Species** : rabbit / guinea pig / goat, polyclonal

**Antigen** : rat calbindin purified from rat brains for rabbit serum, mouse calbindin expressed in bacteria for guinea pig and goat antibodies.

ご注意 : 本商品には 0.1 % 未満のアジ化ナトリウムが入っています。誤って目や口に入ったり、皮膚に付着した場合は大量の水で洗い流してください。

**Specificity** : mouse (others not tested)

Immunoblot detects a single protein band at 28 kDa.



**Applications** : The rabbit antiserum contains can be used for cryosections and microslicer sections at the final dilution of 1:10000-1:40000, and for paraffin section at the final dilution of 1:4000-1:10000. Affinity-purified antibody is used at around 1 microgram/ml for immunoblot and immunohistochemistry. The most appropriate dilution in given tissues should be determined by users, because it depends on contents in given cells, tissues and organs.

**Research Use** : For research use only, not for use in diagnostic procedures.

**Remarks** : If you have no special preference for species, rabbit and goat CB antibodies are primarily recommended.

**Reference** : 1) Nakagawa S, Watanabe M, Isobe T, Kondo H, Inoue Y: Cytological compartmentalization in the staggerer cerebellum, as revealed by calbindin immunohistochemistry for Purkinje cells. **J. Comp. Neurol.** 395:112-120, 1998  
2) Miura E, Fukaya M, Sato T, Sugihara K, Asano M, Yoshioka K, Watanabe M: Expression and distribution of JNK/SAPK-associated scaffold protein JSAP1 in developing and adult mouse brain. **J. Neurochem.** 97:1431-1446, 2006  
3) Yoshida T, Fukaya M, Uchigashima M, Kamiya H, Kano M, Watanabe M: Localization of diacylglycerol lipase- $\alpha$  around postsynaptic spine suggests close proximity between production site of an endocannabinoid, 2-arachidonoyl-glycerol, and presynaptic cannabinoid CB1 receptor. **J. Neurosci.** 26: 4740-4751, 2006

ご注意 : 本商品には 0.1 % 未満のアジ化ナトリウムが入っています。 誤って目や口に入ったり、皮膚に付着した場合は大量の水で洗い流してください。