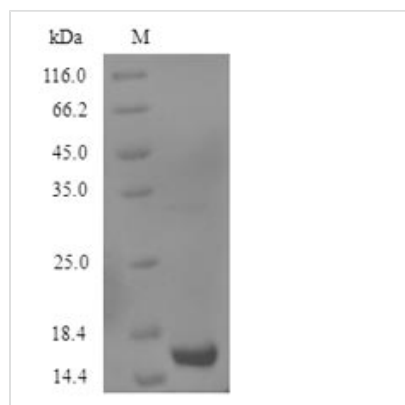




# Recombinant Human Growth/differentiation factor 2 (GDF2), partial

<b>Product Code</b>	CSB-YP892325HU1
<b>Relevance</b>	Potent circulating inhibitor of angiogenesis. Could be involved in bone formation. Signals through the type I activin receptor ACVRL1 but not other Alks. Signaling through SMAD1 in endothelial cells requires TGF-beta coreceptor endoglin/ENG.
<b>Abbreviation</b>	Recombinant Human GDF2 protein, partial
<b>Storage</b>	The shelf life is related to many factors, storage state, buffer ingredients, storage temperature and the stability of the protein itself. Generally, the shelf life of liquid form is 6 months at -20°C/-80°C. The shelf life of lyophilized form is 12 months at -20°C/-80°C.
<b>Uniprot No.</b>	Q9UK05
<b>Product Type</b>	Recombinant Proteins
<b>Immunogen Species</b>	Homo sapiens (Human)
<b>Purity</b>	Greater than 90% as determined by SDS-PAGE.
<b>Sequence</b>	HEEDTDGHVAAGSTLARRKRSAGAGSHCQKTSLRVNFEDIGWDSWIIAPKEY EAYECKGGCFFPLADDVTPTKHAIVQTLVHLKFPTKVGKACCVPTKLSPISVLY KDDMGVPTLKYHYEGMSVAECGCR
<b>Research Area</b>	Cell Biology
<b>Source</b>	Yeast
<b>Target Names</b>	GDF2
<b>Protein Names</b>	Recommended name: Growth/differentiation factor 2 Short name= GDF-2Alternative name(s): Bone morphogenetic protein 9 Short name= BMP-9
<b>Expression Region</b>	300-429aa
<b>Notes</b>	Repeated freezing and thawing is not recommended. Store working aliquots at 4°C for up to one week.
<b>Tag Info</b>	N-terminal 6xHis-tagged
<b>Mol. Weight</b>	16.3kDa
<b>Protein Length</b>	Partial
<b>Image</b>	



(Tris-Glycine gel) Discontinuous SDS-PAGE (reduced) with 5% enrichment gel and 15% separation gel.

## Description

The recombinant Human GDF2 protein production in Yeast cells involves the integration of a DNA fragment encoding the Human GDF2 protein (300-429aa) into a plasmid vector, which is then introduced into Yeast cells. Following screening, positive cells are cultured and induced to synthesize the GDF2 protein. A N-terminal 6xHis tag is attached to the protein. Cell lysis is carried out to harvest the recombinant Human GDF2 protein, which is purified through affinity purification and then analyzed using SDS-PAGE and subsequent staining of the gel with Coomassie Brilliant Blue. The purity of the resulting recombinant Human GDF2 protein reaches over 90%.

## Shelf Life

The shelf life is related to many factors, storage state, buffer ingredients, storage temperature and the stability of the protein itself. Generally, the shelf life of liquid form is 6 months at -20°C/-80°C. The shelf life of lyophilized form is 12 months at -20°C/-80°C.