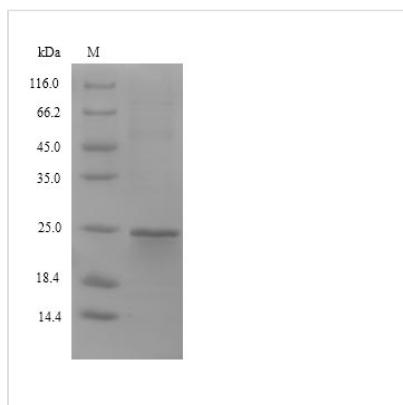




Recombinant Mouse Stromal cell-derived factor 2-like protein 1 (Sdf2l1)

Product Code	CSB-YP884158MO
Abbreviation	Recombinant Mouse Sdf2l1 protein
Storage	The shelf life is related to many factors, storage state, buffer ingredients, storage temperature and the stability of the protein itself. Generally, the shelf life of liquid form is 6 months at -20°C/-80°C. The shelf life of lyophilized form is 12 months at -20°C/-80°C.
Uniprot No.	Q9ESP1
Product Type	Recombinant Protein
Immunogen Species	Mus musculus (Mouse)
Purity	Greater than 90% as determined by SDS-PAGE.
Sequence	SKASAGLVTCGSLKLLNTHHKVRLHSHDIKYGSGSGQQSVTGVEESDDANS YWRIRGGSEGCGPRGLPVRCGQAVRLTHVLTGKNLHTHHFPSPLSNNQEVSA FGEDGEGLDLWTVRCGQHWEREASVRFQHVGTSLVSVTGEQYGNPIR GQHEVHGMPSANAHNTWKAMEGIFIKPGADLSTGHDEL
Research Area	others
Source	Yeast
Target Names	Sdf2l1
Protein Names	Recommended name: Stromal cell-derived factor 2-like protein 1 Short name= SDF2-like protein 1
Expression Region	29-211aa
Notes	Repeated freezing and thawing is not recommended. Store working aliquots at 4°C for up to one week.
Tag Info	N-terminal 6xHis-tagged and C-terminal Myc-tagged
Mol. Weight	24.4kDa
Protein Length	Full Length of Mature Protein

Image



(Tris-Glycine gel) Discontinuous SDS-PAGE (reduced) with 5% enrichment gel and 15% separation gel.



Reconstitution

We recommend that this vial be briefly centrifuged prior to opening to bring the contents to the bottom. Please reconstitute protein in deionized sterile water to a concentration of 0.1-1.0 mg/mL. We recommend to add 5-50% of glycerol (final concentration) and aliquot for long-term storage at -20°C/-80°C. Our default final concentration of glycerol is 50%. Customers could use it as reference.

Shelf Life

The shelf life is related to many factors, storage state, buffer ingredients, storage temperature and the stability of the protein itself. Generally, the shelf life of liquid form is 6 months at -20°C/-80°C. The shelf life of lyophilized form is 12 months at -20°C/-80°C.