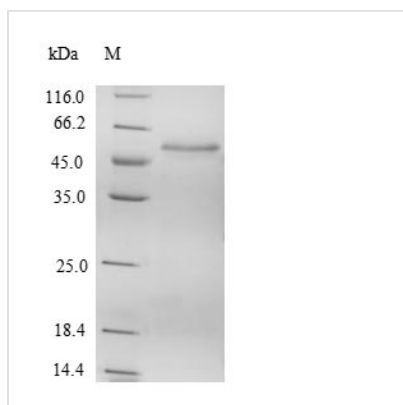




Recombinant Human Suppressor of SWI4 1 homolog (PPAN)

Product Code	CSB-YP868284HU
Relevance	May have a role in cell growth.
Abbreviation	Recombinant Human PPAN protein
Storage	The shelf life is related to many factors, storage state, buffer ingredients, storage temperature and the stability of the protein itself. Generally, the shelf life of liquid form is 6 months at -20°C/-80°C. The shelf life of lyophilized form is 12 months at -20°C/-80°C.
Uniprot No.	Q9NQ55
Alias	Brix domain-containing protein 3;Peter Pan homolog
Product Type	Recombinant Protein
Immunogen Species	Homo sapiens (Human)
Purity	Greater than 90% as determined by SDS-PAGE.
Sequence	MGQSGRSRHQKRARAQAQLRNLEAYAANPHSFVFTRGCTGRNIRQLSLDVR RVMEPLTASRLQVRKKNSLKDCVAVAGPLGVTHFLILSKTETNVYFKLMRLPG GPTLTFQVKKYSLVRDVVSSLRHRMHEQQFAHPPLLVLNSFGPHGMHVKLM ATMFQNLFPSINVHKVNLNTIKRCLLDYNPDSQELDFRHYSIKVVPVGASRGM KKLLQEKFPNMSRLQDISELLATGAGLSESEAEPDGDHNTLQPQAVAGRNM RAQQSAVRLTEIGPRMTLQLIKVQEGVGEGKVMFHSFVSKTEEELQAILEAKEK KLRLKAQRQAQQAQNVQRKQEQREAHRRKKSLEGMKKARVGGSDDEEASGIPS RTASLELGEDDDDEQEDDDIEYFCQAVGEAPSEDLFPEAKQKRLAKSPGRKRK RWEMDRGRGRLCDQKFPKTKDKSQGAQARRGPRGASRDGGRGRGRGRPG KRVA
Research Area	Epigenetics and Nuclear Signaling
Source	Yeast
Target Names	PPAN
Protein Names	Recommended name: Suppressor of SWI4 1 homolog Short name= Ssf-1 Alternative name(s): Brix domain-containing protein 3 Peter Pan homolog
Expression Region	1-473aa
Notes	Repeated freezing and thawing is not recommended. Store working aliquots at 4°C for up to one week.
Tag Info	N-terminal 6xHis-tagged
Mol. Weight	55.2kDa
Protein Length	Full Length
Image	



(Tris-Glycine gel) Discontinuous SDS-PAGE (reduced) with 5% enrichment gel and 15% separation gel.

Reconstitution

We recommend that this vial be briefly centrifuged prior to opening to bring the contents to the bottom. Please reconstitute protein in deionized sterile water to a concentration of 0.1-1.0 mg/mL. We recommend to add 5-50% of glycerol (final concentration) and aliquot for long-term storage at -20°C/-80°C. Our default final concentration of glycerol is 50%. Customers could use it as reference.

Shelf Life

The shelf life is related to many factors, storage state, buffer ingredients, storage temperature and the stability of the protein itself. Generally, the shelf life of liquid form is 6 months at -20°C/-80°C. The shelf life of lyophilized form is 12 months at -20°C/-80°C.