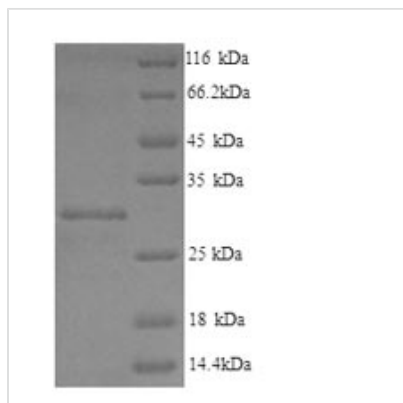




Recombinant Human Phospholysine phosphohistidine inorganic pyrophosphate phosphatase (LHPP)

Product Code	CSB-YP867114HU
Relevance	Phosphatase that hydrolyzes imidodiphosphate, 3-phosphohistidine and 6-phospholysine. Has broad substrate specificity and can also hydrolyze inorganic diphosphate, but with lower efficiency (By similarity)
Abbreviation	Recombinant Human LHPP protein
Storage	The shelf life is related to many factors, storage state, buffer ingredients, storage temperature and the stability of the protein itself. Generally, the shelf life of liquid form is 6 months at -20°C/-80°C. The shelf life of lyophilized form is 12 months at -20°C/-80°C.
Uniprot No.	Q9H008
Product Type	Recombinant Protein
Immunogen Species	Homo sapiens (Human)
Purity	Greater than 90% as determined by SDS-PAGE.
Sequence	MAPWGKRLAGVRGVLLDISGVLYDSGAGGGTAIAGSVEAVARLKRSRLKVRFC CTNESQKSRAELVGQLQRLGFDISEQEVTAPAPAACQILKEQGLRPYLLIHDGVR RSEFDQIDTSNPNCVVIADAGESFSYQNMNNAFQVLMELEKPVLLISLGKGRYY KETSGMLLDVGPYMKALEYACGIKAEEVVGKPSPEFFKSALQAIGVEAHQAVMI GDDIVGDVGGAQRCGMRALQVRTGKFRPSDEHHPEVKADGYVDNLAEAVDL LLQHADK
Research Area	Metabolism
Source	Yeast
Target Names	LHPP
Protein Names	Recommended name: Phospholysine phosphohistidine inorganic pyrophosphate phosphatase Short name= hLHPP EC= 3.1.3.- EC= 3.6.1.1
Expression Region	1-270aa
Notes	Repeated freezing and thawing is not recommended. Store working aliquots at 4°C for up to one week.
Tag Info	N-terminal 6xHis-tagged
Mol. Weight	31.2kDa
Protein Length	Full Length
Image	



(Tris-Glycine gel) Discontinuous SDS-PAGE (reduced) with 5% enrichment gel and 15% separation gel.

Reconstitution

We recommend that this vial be briefly centrifuged prior to opening to bring the contents to the bottom. Please reconstitute protein in deionized sterile water to a concentration of 0.1-1.0 mg/mL. We recommend to add 5-50% of glycerol (final concentration) and aliquot for long-term storage at -20°C/-80°C. Our default final concentration of glycerol is 50%. Customers could use it as reference.

Shelf Life

The shelf life is related to many factors, storage state, buffer ingredients, storage temperature and the stability of the protein itself. Generally, the shelf life of liquid form is 6 months at -20°C/-80°C. The shelf life of lyophilized form is 12 months at -20°C/-80°C.