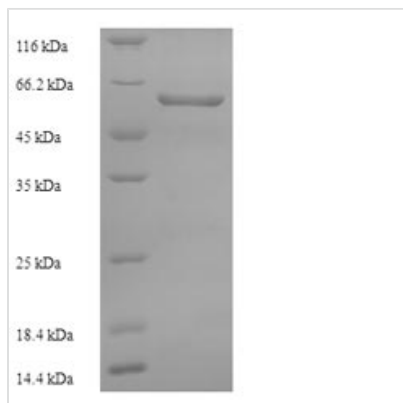




Recombinant Human Pseudokinase FAM20A (FAM20A)

Product Code	CSB-YP850394HU
Abbreviation	Recombinant Human FAM20A protein
Storage	The shelf life is related to many factors, storage state, buffer ingredients, storage temperature and the stability of the protein itself. Generally, the shelf life of liquid form is 6 months at -20°C/-80°C. The shelf life of lyophilized form is 12 months at -20°C/-80°C.
Uniprot No.	Q96MK3
Product Type	Recombinant Protein
Immunogen Species	Homo sapiens (Human)
Purity	Greater than 90% as determined by SDS-PAGE.
Sequence	QLRPRERPRGCPCTGRASSLARDSAAAASDPGTIVHNFSRTEPRTEPAGGSH SGSSSKLQALFAHPLYNVPEEPPLLGAEDSLLASQEALRYRKRVARWNRRH KMYREQMNLTSLDPPLQLRLEASWVQFHLGINRHGLYSRSSPVVSKLLQDMR HFPTISADYSQDEKALLGACDCTQIVKPSGVHLKLVLRFSDFGKAMFKPMRQQ RDEETPVDDFFYFIDFQRHNAEIAAFHLDRILDFRRVPPTVGRIVNVTKILEVTK NEILQSVFFVSPASNVCFFAKCPYMCKTEYAVCGNPHLLEGSLSAFLPSLNLAP RLSVPNPWIRSYTLAGKEEWEVNPLYCDTVKQIYPYNNNSQRLLNVIDMAIFDFLI GNMDRHHYEMFTKFGDDGFLIHLDNARGFGRHSHDEISILSPLSQCCMIKKKT LLHLQLLAQADYRLSDVMRESLLEDQLSPVLTEPHLLALDRRLQTLRTVEGCIV AHGQQSVIVDGPVEQLAPDSGQANLTS
Research Area	Cell Biology
Source	Yeast
Target Names	FAM20A
Protein Names	Recommended name: Protein FAM20A
Expression Region	34-541aa
Notes	Repeated freezing and thawing is not recommended. Store working aliquots at 4°C for up to one week.
Tag Info	N-terminal 6xHis-tagged
Mol. Weight	59.6kDa
Protein Length	Full Length of Mature Protein
Image	



(Tris-Glycine gel) Discontinuous SDS-PAGE (reduced) with 5% enrichment gel and 15% separation gel.

Reconstitution

We recommend that this vial be briefly centrifuged prior to opening to bring the contents to the bottom. Please reconstitute protein in deionized sterile water to a concentration of 0.1-1.0 mg/mL. We recommend to add 5-50% of glycerol (final concentration) and aliquot for long-term storage at -20°C/-80°C. Our default final concentration of glycerol is 50%. Customers could use it as reference.

Shelf Life

The shelf life is related to many factors, storage state, buffer ingredients, storage temperature and the stability of the protein itself. Generally, the shelf life of liquid form is 6 months at -20°C/-80°C. The shelf life of lyophilized form is 12 months at -20°C/-80°C.