



Recombinant Cricetulus griseus Protein disulfide-isomerase (P4HB)

Product Code	CSB-YP823188DXU
Relevance	This multifunctional protein catalyzes the formation, breakage and rearrangement of disulfide bonds. At the cell surface, seems to act as a reductase that cleaves disulfide bonds of proteins attached to the cell. May therefore cause structural modifications of exofacial proteins. Inside the cell, seems to form/rearrange disulfide bonds of nascent proteins. At high concentrations, functions as a chaperone that inhibits aggregation of misfolded proteins. At low concentrations, facilitates aggregation (anti-chaperone activity). May be involved with other chaperones in the structural modification of the TG precursor in hormone biogenesis. Also acts a structural subunit of various enzymes such as prolyl 4-hydroxylase and microsomal triacylglycerol transfer protein MTTP. Receptor for LGALS9; the interaction retains P4HB at the cell surface of Th2 T helper cells, increasing disulfide reductase activity at the plasma membrane, altering the plasma membrane redox state and enhancing cell migration.
Abbreviation	Recombinant Cricetulus griseus NEU2 protein
Storage	The shelf life is related to many factors, storage state, buffer ingredients, storage temperature and the stability of the protein itself. Generally, the shelf life of liquid form is 6 months at -20°C/-80°C. The shelf life of lyophilized form is 12 months at -20°C/-80°C.
Uniprot No.	Q8R4U2
Product Type	Recombinant Proteins
Immunogen Species	Chinese hamster
Purity	Greater than 90% as determined by SDS-PAGE.
Sequence	DAPEEEDNVLVLKKSNAEALAAHNYLLVEFYAPWCGHCKALAPEYAKAAAKL KAEGSEIRLAKVDATEESDLAQQYGVRGYPTIKFFKNGDTASPKEYTAGREAD DIVNWLKKRTGPAATTLSDTAAETLIDSSEVAVIGFFKDVESDSAQQLLAAEA VDDIPFGITSNSGVFSKYQLDKDGVVLFKKFDEGRNMFEGEVTKEKLLDFIKHN QLPLVIEFTEQTAPKIFGGEIKTHILLFLPKSVSDYDGKLGNFKAAEGFKGKILFI FIDSDHTDNQRILEFFGLKKEECPAVRLITLEEEMTKYKPESDELTAEKITEFCH RFLEGKIKPHLMSQELPEDWDKQPVKVLVGKNFEEVAFDEKKNVFVEFYAPW CGHCKQLAPIWDKLGETYKDHENIIIAKMDSTANEVEAVKVHSFPTLKFFPATA DRTVIDYNGERTLDGFKKFLESQGGQDGAGDDDDVDLEEALPDMEEDDDQKA VKDEL
Source	Yeast
Target Names	P4HB
Expression Region	20-509aa
Notes	Repeated freezing and thawing is not recommended. Store working aliquots at



4°C for up to one week.

Tag Info

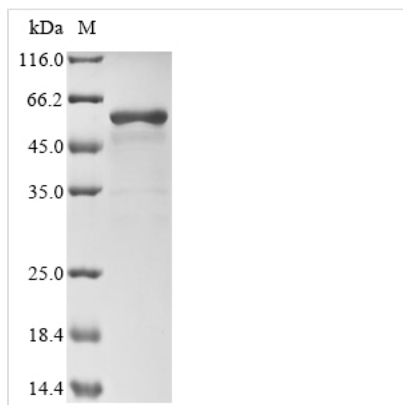
N-terminal 6xHis-tagged

Mol. Weight

57.0kDa

Protein Length

Full Length of Mature Protein

Image


(Tris-Glycine gel) Discontinuous SDS-PAGE (reduced) with 5% enrichment gel and 15% separation gel.

Shelf Life

The shelf life is related to many factors, storage state, buffer ingredients, storage temperature and the stability of the protein itself.

Generally, the shelf life of liquid form is 6 months at -20°C/-80°C. The shelf life of lyophilized form is 12 months at -20°C/-80°C.