



# Recombinant Mouse Dihydrolipoyllysine-residue acetyltransferase component of pyruvate dehydrogenase complex, mitochondrial (Dlat)

<b>Product Code</b>	CSB-YP804374MO
<b>Relevance</b>	The pyruvate dehydrogenase complex catalyzes the overall conversion of pyruvate to acetyl-CoA and CO <sub>2</sub> , and thereby links the glycolytic pathway to the tricarboxylic cycle.
<b>Abbreviation</b>	Recombinant Mouse Dlat protein
<b>Storage</b>	The shelf life is related to many factors, storage state, buffer ingredients, storage temperature and the stability of the protein itself. Generally, the shelf life of liquid form is 6 months at -20°C/-80°C. The shelf life of lyophilized form is 12 months at -20°C/-80°C.
<b>Uniprot No.</b>	Q8BMF4
<b>Alias</b>	Dihydrolipoamide acetyltransferase component of pyruvate dehydrogenase complex Pyruvate dehydrogenase complex component E2
<b>Product Type</b>	Recombinant Protein
<b>Immunogen Species</b>	Mus musculus (Mouse)
<b>Purity</b>	Greater than 90% as determined by SDS-PAGE.
<b>Sequence</b>	SLPPHQKVPLPSLSPTMQAGTIARWEKKEGEKISEGDLIAEVETDKATVGFESL EECYMAKILVPEGTRDVPVGSIIICITVEKPQDIEAFKNYTLDLAAAAAPQAAPAA APAPAAAPAAPSASAPGSSSYPTHMQIVLPALSPTMTMGTVQRWEKKVGEKLS EGDLLAEIETDKATIGFEVQEEGYLAKILVPEGTRDVPGLAPLCIIVEKQEDIAAF ADYRPTEVTSCLKPQAAPPAPPPVAAVPPTPQPVAPTPSAAPAGPKGRVFSPL AKKLAAEKIDLTQVKGTGPEGRIKKDIDSFVPSKAAPAAAAAMAPPGRVAP APAGVFTDIPISNIRRVIAQRLMQSKQTIPHYLSVDVNMGEVLLVRKELNKMLE GKGKISVNDFIKASALACLKVPEANSSWMDTVIRQNHVVDVSVAVSTPAGLITP IVFNAHIKGLETIASDVVSLASKAREGKLQPHEFQGGTFTISNLGMFGIKNFSAII NPPQACILAIGASEDKLIPADNEKGFDVASVMSVTLSCDHRVVDGAVGAQWLA EFKKYLEKPITMLL
<b>Research Area</b>	Signal Transduction
<b>Source</b>	Yeast
<b>Target Names</b>	Dlat
<b>Protein Names</b>	Recommended name: Dihydrolipoyllysine-residue acetyltransferase component of pyruvate dehydrogenase complex, mitochondrial EC= 2.3.1.12 Alternative name(s): Dihydrolipoamide acetyltransferase component of pyruvate dehydrogenase complex
<b>Expression Region</b>	86-642aa
<b>Notes</b>	Repeated freezing and thawing is not recommended. Store working aliquots at



4°C for up to one week.

**Tag Info**

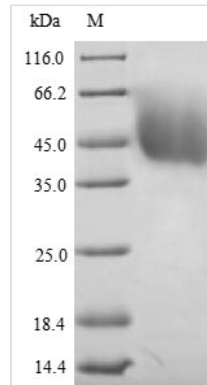
N-terminal 6xHis-tagged

**Mol. Weight**

60.8kDa

**Protein Length**

Full Length of Mature Protein

**Image**


(Tris-Glycine gel) Discontinuous SDS-PAGE (reduced) with 5% enrichment gel and 15% separation gel.

**Reconstitution**

We recommend that this vial be briefly centrifuged prior to opening to bring the contents to the bottom. Please reconstitute protein in deionized sterile water to a concentration of 0.1-1.0 mg/mL. We recommend to add 5-50% of glycerol (final concentration) and aliquot for long-term storage at -20°C/-80°C. Our default final concentration of glycerol is 50%. Customers could use it as reference.

**Shelf Life**

The shelf life is related to many factors, storage state, buffer ingredients, storage temperature and the stability of the protein itself. Generally, the shelf life of liquid form is 6 months at -20°C/-80°C. The shelf life of lyophilized form is 12 months at -20°C/-80°C.