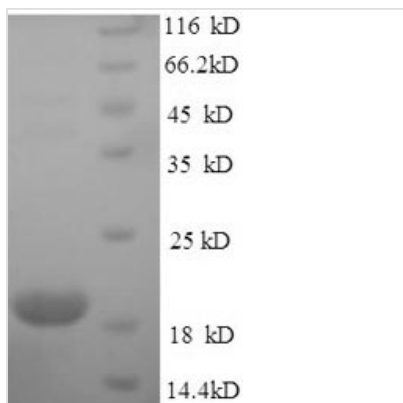




Recombinant Human Immunoglobulin-like domain-containing receptor 2 (ILDR2), partial

Product Code	CSB-YP751251HU
Relevance	May be involved in lipid homeostasis and ER stress pathways.
Abbreviation	Recombinant Human ILDR2 protein, partial
Storage	The shelf life is related to many factors, storage state, buffer ingredients, storage temperature and the stability of the protein itself. Generally, the shelf life of liquid form is 6 months at -20°C/-80°C. The shelf life of lyophilized form is 12 months at -20°C/-80°C.
Uniprot No.	Q71H61
Product Type	Recombinant Protein
Immunogen Species	Homo sapiens (Human)
Purity	Greater than 90% as determined by SDS-PAGE.
Sequence	MDRVLLRWISLFWLTAMVEGLQVTPDKKKVAMLFQPTVLRCHFSTSSHQPA VVQWKFKSYCQDRMGESLGMSSSTRAQSLSKRNLWDYPDCLDSRRTVRVV ASKQGSTVTLGDFYRGREITIVHDADLQIGKLMWGDSGLYYCIITTPDDLEGKN EDSVELLVLGRTGLLADLLPSFAVEIMPE
Research Area	Immunology
Source	Yeast
Target Names	ILDR2
Protein Names	Recommended name: Immunoglobulin-like domain-containing receptor 2
Expression Region	1-186aa
Notes	Repeated freezing and thawing is not recommended. Store working aliquots at 4°C for up to one week.
Tag Info	N-terminal 6xHis-tagged
Mol. Weight	23.1kDa
Protein Length	Extracellular Domain
Image	



(Tris-Glycine gel) Discontinuous SDS-PAGE (reduced) with 5% enrichment gel and 15% separation gel.

Reconstitution

We recommend that this vial be briefly centrifuged prior to opening to bring the contents to the bottom. Please reconstitute protein in deionized sterile water to a concentration of 0.1-1.0 mg/mL. We recommend to add 5-50% of glycerol (final concentration) and aliquot for long-term storage at -20°C/-80°C. Our default final concentration of glycerol is 50%. Customers could use it as reference.

Shelf Life

The shelf life is related to many factors, storage state, buffer ingredients, storage temperature and the stability of the protein itself. Generally, the shelf life of liquid form is 6 months at -20°C/-80°C. The shelf life of lyophilized form is 12 months at -20°C/-80°C.