



Recombinant Human Autophagy-related protein 16-1 (ATG16L1)

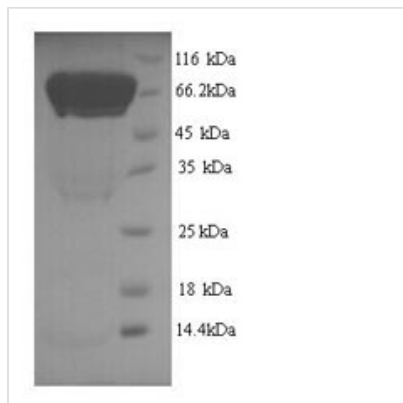
Product Code	CSB-YP734569HU
Relevance	Plays an essential role in autophagy: interacts with ATG12-ATG5 to mediate the conjugation of phosphatidylethanolamine (PE) to LC3 (MAP1LC3A, MAP1LC3B or MAP1LC3C), to produce a mbrane-bound activated form of LC3 named LC3-II. Thereby, controls the elongation of the nascent autophagosomal mbrane.
Abbreviation	Recombinant Human ATG16L1 protein
Storage	The shelf life is related to many factors, storage state, buffer ingredients, storage temperature and the stability of the protein itself. Generally, the shelf life of liquid form is 6 months at -20°C/-80°C. The shelf life of lyophilized form is 12 months at -20°C/-80°C.
Uniprot No.	Q676U5
Alias	APG16-like 1
Product Type	Recombinant Protein
Immunogen Species	Homo sapiens (Human)
Purity	Greater than 90% as determined by SDS-PAGE.
Sequence	MSSGLRAADFPRWKRHISEQLRRRDRLQRQAFEEIILQYNKLLLEKSDLHSVLA QKLQAEKHDVPNRHEISPGHDGTWNDNQLQEMAQLRIKHQEELTELHKKRGE LAQLVIDLNNQMQRKDREMQMNEAKIAECLQTISDLETECLDLRTKLCDLERA NQTLKDEYDALQITFTALEGKLRKTTEENQELVTRWMAEKAQEANRLNAENK DSRRRQARLQKELAEAAKEPLPVEQDDIEVIVDETSDHTEETSPVRAISRAAT KRLSQPAGGLLDSITNIFGRRSVSSFPVPQDNVDTHPGSGKEVRVPATALCVF DAHDGEVNAVQFSPGSRLLATGGMDRRVKLWEVFGKEKCEFKGSLSGSNAGIT SIEFDSAGSYLLAASNDFASRIWTVDDYRLRHTLTGHSGKVLSAKFLLDNARIV SGSHDRTLKLWDLRSKVCIKTVFAGSSCNDIVCTEQCVMSGHFDKKIRFWDIR SESIVREMELLGKITALDLPTELLSCSRDDLKVIDLRTNAIKQTF SAPGFK CGSDWTRVVFSPDGSYVAAGSAEGSLYIWSVLTGKVEKVLKQHSSSINAVA WSPSGSHVVSVDKGCKAVLWAQY
Research Area	Cancer
Source	Yeast
Target Names	ATG16L1
Protein Names	Recommended name: Autophagy-related protein 16-1 Alternative name(s): APG16-like 1
Expression Region	1-607aa
Notes	Repeated freezing and thawing is not recommended. Store working aliquots at 4°C for up to one week.
Tag Info	N-terminal 6xHis-tagged



Mol. Weight 70.3kDa

Protein Length Full Length

Image



(Tris-Glycine gel) Discontinuous SDS-PAGE (reduced) with 5% enrichment gel and 15% separation gel.

Reconstitution

We recommend that this vial be briefly centrifuged prior to opening to bring the contents to the bottom. Please reconstitute protein in deionized sterile water to a concentration of 0.1-1.0 mg/mL. We recommend to add 5-50% of glycerol (final concentration) and aliquot for long-term storage at -20°C/-80°C. Our default final concentration of glycerol is 50%. Customers could use it as reference.

Shelf Life

The shelf life is related to many factors, storage state, buffer ingredients, storage temperature and the stability of the protein itself. Generally, the shelf life of liquid form is 6 months at -20°C/-80°C. The shelf life of lyophilized form is 12 months at -20°C/-80°C.