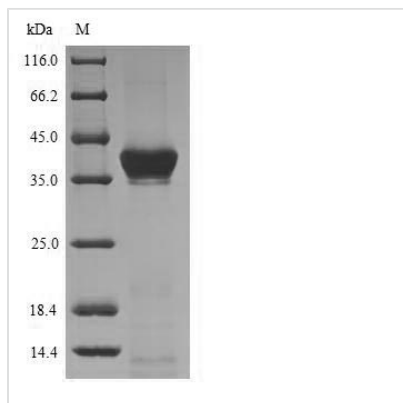


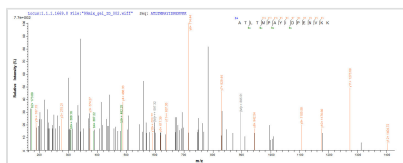


# Recombinant Staphylococcus aureus Clumping factor A (clfA), partial

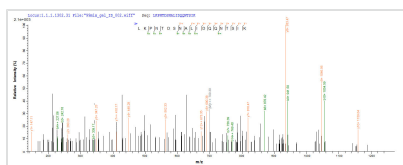
|                          |  |
|--------------------------|--|
| <b>Product Code</b>      | CSB-YP692021FLB  |
| <b>Relevance</b>         | Cell surface-associated protein implicated in virulence. Promotes bacterial attachment exclusively to the gamma-chain of human fibrinogen. Induces formation of bacterial clumps (By similarity)   |
| <b>Abbreviation</b>      | Recombinant Staphylococcus aureus clfA protein, partial  |
| <b>Storage</b>           | The shelf life is related to many factors, storage state, buffer ingredients, storage temperature and the stability of the protein itself. Generally, the shelf life of liquid form is 6 months at -20°C/-80°C. The shelf life of lyophilized form is 12 months at -20°C/-80°C.  |
| <b>Uniprot No.</b>       | Q5HBM8   |
| <b>Alias</b>             | Fibrinogen receptor A Fibrinogen-binding protein A   |
| <b>Product Type</b>      | Recombinant Protein  |
| <b>Immunogen Species</b> | Staphylococcus aureus (strain COL)   |
| <b>Purity</b>            | Greater than 90% as determined by SDS-PAGE.  |
| <b>Sequence</b>          | GTDITNQLTNTVTGIDSGTTVYPHQAGYVKLNYGFSVPNSAVKGDTFKITVPKE<br>LNLNGVTSTAKVPPIMAGDQVLANGVIDSDGNVIYTFDYYVNTKDDVKATLTMP<br>AYIDPENVKKTGNVTLATGIGSTTANKTVLVDYEKYGKFYNLSIKGTIDQIDKTN<br>NTYRQTIYVNPSPGDNVIAPVLTGNLKPNTDSNALIDQQNTSIKVYKVDNAADLS<br>ESYFVNPFEDVTNSVNITFPNPNQYKVEFNTDQITTPYIVVNGHIDPNS<br>KGDALRSTLYGYNNSNIWRSMSWDNEVAFNNGSGSGDGIDKPVVPEQPDEP<br>GEIEPIPE |
| <b>Research Area</b>     | others   |
| <b>Source</b>            | Yeast  |
| <b>Target Names</b>      | clfA   |
| <b>Protein Names</b>     | Recommended name: Clumping factor A Alternative name(s): Fibrinogen receptor A Fibrinogen-binding protein A  |
| <b>Expression Region</b> | 229-559aa  |
| <b>Notes</b>             | Repeated freezing and thawing is not recommended. Store working aliquots at 4°C for up to one week.  |
| <b>Tag Info</b>          | N-terminal 6xHis-tagged  |
| <b>Mol. Weight</b>       | 38.0kDa  |
| <b>Protein Length</b>    | Partial  |
| <b>Image</b>             |  |



(Tris-Glycine gel) Discontinuous SDS-PAGE (reduced) with 5% enrichment gel and 15% separation gel.



Based on the SEQUEST from database of Yeast host and target protein, the LC-MS/MS Analysis result of CSB-YP692021FLB could indicate that this peptide derived from Yeast-expressed *Staphylococcus aureus* (strain COL) clfA.



Based on the SEQUEST from database of Yeast host and target protein, the LC-MS/MS Analysis result of CSB-YP692021FLB could indicate that this peptide derived from Yeast-expressed *Staphylococcus aureus* (strain COL) clfA.

## Reconstitution

We recommend that this vial be briefly centrifuged prior to opening to bring the contents to the bottom. Please reconstitute protein in deionized sterile water to a concentration of 0.1-1.0 mg/mL. We recommend to add 5-50% of glycerol (final concentration) and aliquot for long-term storage at -20°C/-80°C. Our default final concentration of glycerol is 50%. Customers could use it as reference.

## Shelf Life

The shelf life is related to many factors, storage state, buffer ingredients, storage temperature and the stability of the protein itself. Generally, the shelf life of liquid form is 6 months at -20°C/-80°C. The shelf life of lyophilized form is 12 months at -20°C/-80°C.