



Recombinant Mouse Putative phospholipase B-like 2 (Plbd2)

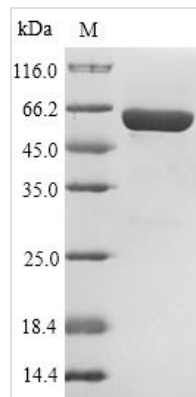
Product Code	CSB-YP663623MO
Relevance	Putative phospholipase.
Abbreviation	Recombinant Mouse Plbd2 protein
Storage	The shelf life is related to many factors, storage state, buffer ingredients, storage temperature and the stability of the protein itself. Generally, the shelf life of liquid form is 6 months at -20°C/-80°C. The shelf life of lyophilized form is 12 months at -20°C/-80°C.
Uniprot No.	Q3TCN2
Alias	66.3 kDa protein 76 kDa protein Short name: p76 LAMA-like protein 2 Lamina ancestor homolog 2 Phospholipase B domain-containing protein 2
Product Type	Recombinant Protein
Immunogen Species	Mus musculus (Mouse)
Purity	Greater than 90% as determined by SDS-PAGE.
Sequence	LPTLGPGWQRQNPDPPVSRTRSLLLDAASGQLRLEDGFHPDAVAWANLTNAI RETGWAYLDLSTNGRYNDLQAYAAGVVEASVSEELIYMHWMNTVVNYCGP FEYEVGYCEKLNFLLEANLEWMQREMELNPDSPLYWHQVRLTLLQLKGLEDSEY EGRLTFPTGRFTIKPLGFLLLQISGDLEDLEPALNKTNTKPSLGSGSCSALIKLLP GGHDLLVAHNTWNSYQNMLRIKKYRLQFREGPQEEYPLVAGNNLVFSSYPG TIFSGDDFYILGSLVTLETTIGNKNPALWKYVQPQGCVLEWIRNVVANRLALD GATWADVFKRFNSGTYNQWMIVDYKAFLPNGPSPGSRVLTILEQIPGMVVV ADKTAELYKTTYWASYNIPYFETVFNASGLQALVAQYGDWFSYTKNPRAKIFQ RDQSLVEDMDAMVRLMRYNDLHDLPLSLCEACNPKPNAENAIARSDLNPAN GSYPFQALHQRAHGGIDVKVTSFTLAKYMSMLAASGPTWDQCPPFQWSKSP FHSMMLHMGQPDLMWFSPIRVPWD
Research Area	Signal Transduction
Source	Yeast
Target Names	Plbd2
Protein Names	Recommended name: Putative phospholipase B-like 2 EC= 3.1.1.- Alternative name(s): 66.3 kDa protein 76 kDa protein Short name= p76 LAMA-like protein 2 Lamina ancestor homolog 2 Phospholipase B domain-containing protei
Expression Region	47-594aa
Notes	Repeated freezing and thawing is not recommended. Store working aliquots at 4°C for up to one week.
Tag Info	N-terminal 6xHis-tagged
Mol. Weight	63.9kDa



Protein Length

Full Length of Mature Protein

Image



(Tris-Glycine gel) Discontinuous SDS-PAGE (reduced) with 5% enrichment gel and 15% separation gel.

Reconstitution

We recommend that this vial be briefly centrifuged prior to opening to bring the contents to the bottom. Please reconstitute protein in deionized sterile water to a concentration of 0.1-1.0 mg/mL. We recommend to add 5-50% of glycerol (final concentration) and aliquot for long-term storage at -20°C/-80°C. Our default final concentration of glycerol is 50%. Customers could use it as reference.

Shelf Life

The shelf life is related to many factors, storage state, buffer ingredients, storage temperature and the stability of the protein itself. Generally, the shelf life of liquid form is 6 months at -20°C/-80°C. The shelf life of lyophilized form is 12 months at -20°C/-80°C.