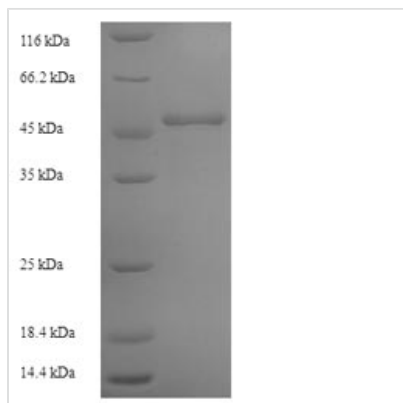




Recombinant Arabidopsis thaliana Lycopene beta cyclase, chloroplastic (LCY1)

Product Code	CSB-YP657129DOA
Relevance	Catalyzes the double cyclization reaction which converts lycopene to beta-carotene and neurosporene to beta-zeacarotene.
Abbreviation	Recombinant Mouse-ear cress LCY1 protein
Storage	The shelf life is related to many factors, storage state, buffer ingredients, storage temperature and the stability of the protein itself. Generally, the shelf life of liquid form is 6 months at -20°C/-80°C. The shelf life of lyophilized form is 12 months at -20°C/-80°C.
Uniprot No.	Q38933
Product Type	Recombinant Protein
Immunogen Species	Arabidopsis thaliana (Mouse-ear cress)
Purity	Greater than 90% as determined by SDS-PAGE.
Sequence	QVVDLAIVGGGPAGLAVAQQVSEAGLSVCSIDPSPKLIWPNNYGVWVDEFEA MDLLDCLDTTWSGAVVYVDEGVKKDLSPYGRVNRKQLKSKMLQKCITNGVK FHQSKVTNVVHEEANSTVVCSDGVKIQASVVLDTGFSRCLVQYDKPYNPGY QVAYGIVAEVDGHPFDVDKMFMDWRDKHLDSYPELKERNSKIPTFLYAMPF SSNRIFLEETSLVARPGLRMEDIQERMAARLKHLGINVKRIEEDERCVIPMGGP LPVLPQRVVGIGGTAGMVHPSTGYMVARTLAAPIVANAIVRYLGSPSSNSLR GDQLSAEVWRDLWPIERRRQREFFCFGMDILLKLDLDATRRFFDAFFDLQPHY WHGFLSSRLFLPELLVFGLSLFSHASNTSRLEIMTKGTVPLAKMINNLVQDRD
Research Area	Others
Source	Yeast
Target Names	LCY1
Protein Names	Recommended name: Lycopene beta cyclase, chloroplastic EC= 5.5.1.19
Expression Region	81-501aa
Notes	Repeated freezing and thawing is not recommended. Store working aliquots at 4°C for up to one week.
Tag Info	N-terminal 6xHis-tagged
Mol. Weight	49.1kDa
Protein Length	Full Length of Mature Protein
Image	



(Tris-Glycine gel) Discontinuous SDS-PAGE (reduced) with 5% enrichment gel and 15% separation gel.

Reconstitution

We recommend that this vial be briefly centrifuged prior to opening to bring the contents to the bottom. Please reconstitute protein in deionized sterile water to a concentration of 0.1-1.0 mg/mL. We recommend to add 5-50% of glycerol (final concentration) and aliquot for long-term storage at -20°C/-80°C. Our default final concentration of glycerol is 50%. Customers could use it as reference.

Shelf Life

The shelf life is related to many factors, storage state, buffer ingredients, storage temperature and the stability of the protein itself. Generally, the shelf life of liquid form is 6 months at -20°C/-80°C. The shelf life of lyophilized form is 12 months at -20°C/-80°C.