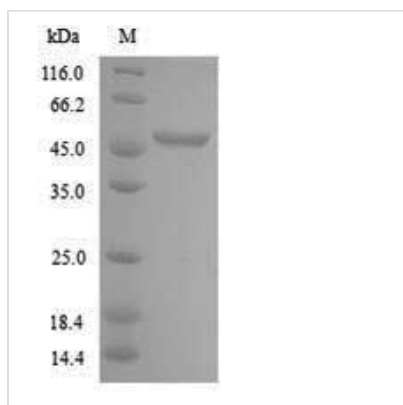




Recombinant Arabidopsis thaliana Cyclin-B2-2 (CYCB2-2)

Product Code	CSB-YP654394DOA
Abbreviation	Recombinant Mouse-ear cress CYCB2-2 protein
Storage	The shelf life is related to many factors, storage state, buffer ingredients, storage temperature and the stability of the protein itself. Generally, the shelf life of liquid form is 6 months at -20°C/-80°C. The shelf life of lyophilized form is 12 months at -20°C/-80°C.
Uniprot No.	Q39070
Alias	Cyc2b-At Cyclin-2b G2/mitotic-specific cyclin-B2-2 Short name: CycB2;2
Product Type	Recombinant Protein
Immunogen Species	Arabidopsis thaliana (Mouse-ear cress)
Purity	Greater than 90% as determined by SDS-PAGE.
Sequence	MVNPEENNRLVVKPITEILQDDDKRSRKFGVEMKRQNRRLGVINHNLVGAK AYPCVVNKRRLSQRKQESCDKKKLDLSLHPSISRSQEETKKLKPSGNEFGDCI FIDEEEEKNEEVTLQDQMPMSLEEPYIEFDPMEEEVEMEDMEEEQEEPVLIDID EYDANNSLAAVEYVQDLYDFYRKTERFSCVPLDYMAQQFDISDKMRAILIDWLI EVHDKFELMNETLFLTVNLIDRFLSKQAVARKKLQLVGLVALLLACKYEEVSVPI VEDLVVISDKAYTRTDVLEMEKIMLSTLQFNMSLPTQYPFLKRFLKAAQSDKKL EILASFLIELALVDYEMVRYPPSLLAATAVYTAQCTIHGFSEWNSTCEFHCHYS ENQLECCRRMVRHLHQKAGTDKLTGVHRKYSSSKFGYIATKYEAAHFLVSDSH
Research Area	Cell Biology
Source	Yeast
Target Names	CYCB2-2
Protein Names	Recommended name: Cyclin-B2-2 Alternative name(s): Cyc2b-At Cyclin-2b G2/mitotic-specific cyclin-B2-2 Short name= CycB2;2
Expression Region	1-429aa
Notes	Repeated freezing and thawing is not recommended. Store working aliquots at 4°C for up to one week.
Tag Info	N-terminal 6xHis-tagged
Mol. Weight	51.8kDa
Protein Length	Full Length
Image	



(Tris-Glycine gel) Discontinuous SDS-PAGE (reduced) with 5% enrichment gel and 15% separation gel.

Reconstitution

We recommend that this vial be briefly centrifuged prior to opening to bring the contents to the bottom. Please reconstitute protein in deionized sterile water to a concentration of 0.1-1.0 mg/mL. We recommend to add 5-50% of glycerol (final concentration) and aliquot for long-term storage at -20°C/-80°C. Our default final concentration of glycerol is 50%. Customers could use it as reference.

Shelf Life

The shelf life is related to many factors, storage state, buffer ingredients, storage temperature and the stability of the protein itself. Generally, the shelf life of liquid form is 6 months at -20°C/-80°C. The shelf life of lyophilized form is 12 months at -20°C/-80°C.