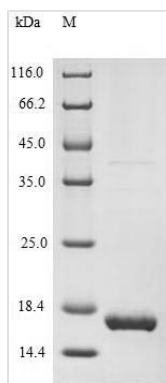




Recombinant Human Melanoma antigen recognized by T-cells 1 (MLANA)

Product Code	CSB-YP621968HU
Relevance	Involved in melanosome biogenesis by ensuring the stability of GPR143. Plays a vital role in the expression, stability, trafficking, and processing of melanocyte protein PMEL, which is critical to the formation of stage II melanosomes.
Abbreviation	Recombinant Human MLANA protein
Storage	The shelf life is related to many factors, storage state, buffer ingredients, storage temperature and the stability of the protein itself. Generally, the shelf life of liquid form is 6 months at -20°C/-80°C. The shelf life of lyophilized form is 12 months at -20°C/-80°C.
Uniprot No.	Q16655
Alias	Antigen LB39-AAAntigen SK29-AAProtein Melan-A
Product Type	Recombinant Protein
Immunogen Species	Homo sapiens (Human)
Purity	Greater than 90% as determined by SDS-PAGE.
Sequence	MPREDAHFYGYGPKKGHGHSYTTAEAAAGIGILTVILGVLLIGCWYCRRRNGY RALMDKSLHVGTTQCALTRRCPEGFDHRDSKVSLEKNCPEVVPNAPPAYEK LSAEQSPPPYSP
Research Area	Cancer
Source	Yeast
Target Names	MLANA
Protein Names	Recommended name: Melanoma antigen recognized by T-cells 1 Short name= MART-1Alternative name(s): Antigen LB39-AA Antigen SK29-AA Protein Melan-A
Expression Region	1-118aa
Notes	Repeated freezing and thawing is not recommended. Store working aliquots at 4°C for up to one week.
Tag Info	N-terminal 6xHis-tagged
Mol. Weight	15.2kDa
Protein Length	Full Length
Image	



(Tris-Glycine gel) Discontinuous SDS-PAGE (reduced) with 5% enrichment gel and 15% separation gel.

Reconstitution

We recommend that this vial be briefly centrifuged prior to opening to bring the contents to the bottom. Please reconstitute protein in deionized sterile water to a concentration of 0.1-1.0 mg/mL. We recommend to add 5-50% of glycerol (final concentration) and aliquot for long-term storage at -20°C/-80°C. Our default final concentration of glycerol is 50%. Customers could use it as reference.

Shelf Life

The shelf life is related to many factors, storage state, buffer ingredients, storage temperature and the stability of the protein itself. Generally, the shelf life of liquid form is 6 months at -20°C/-80°C. The shelf life of lyophilized form is 12 months at -20°C/-80°C.