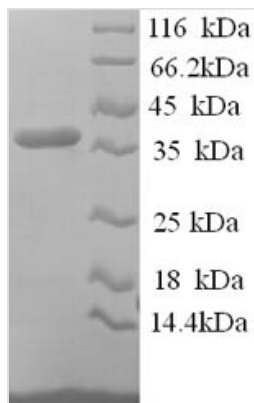


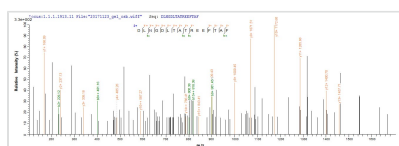


Recombinant Human Reticulocalbin-1 (RCN1), partial

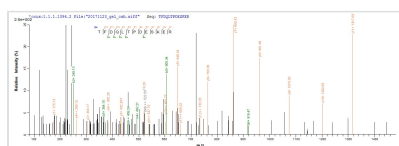
Product Code	CSB-YP618980HU
Relevance	May regulate calcium-dependent activities in the endoplasmic reticulum lumen or post-ER compartment.
Abbreviation	Recombinant Human RCN1 protein, partial
Storage	The shelf life is related to many factors, storage state, buffer ingredients, storage temperature and the stability of the protein itself. Generally, the shelf life of liquid form is 6 months at -20°C/-80°C. The shelf life of lyophilized form is 12 months at -20°C/-80°C.
Uniprot No.	Q15293
Product Type	Recombinant Protein
Immunogen Species	Homo sapiens (Human)
Purity	Greater than 90% as determined by SDS-PAGE.
Sequence	PTVRKERVVRPDSELGERPPEDNQSFQYDHEAFLGKEDSKTFDQLTPDESKE RLGKIVDRIDNDGDGFVTTEELKTWIKRVQKRYIFDNVAKVWKDYDRDKDDKIS WEEYKQATYGYYLGNPAEFHDSSDHHTFKKMLPRDERRFKAADLNGDLTATR EEFTAFLHPEEFEHMKEIVVLETLEDIDKNGDGFVDQDEYIADMFSHEENGPEP DWVLSEREQFNEFRDLNKDGKLDKDEIRHWILPQDYDHAQAEARHLVYESDK NKDEKLTKEEILENWNMFVGSQATNYGEDLTKNHDEL
Research Area	Neuroscience
Source	Yeast
Target Names	RCN1
Protein Names	Recommended name: Reticulocalbin-1
Expression Region	31-331aa
Notes	Repeated freezing and thawing is not recommended. Store working aliquots at 4°C for up to one week.
Tag Info	N-terminal 6xHis-tagged
Mol. Weight	37.7kDa
Protein Length	Partial
Image	



(Tris-Glycine gel) Discontinuous SDS-PAGE (reduced) with 5% enrichment gel and 15% separation gel.



Based on the SEQUEST from database of Yeast host and target protein, the LC-MS/MS Analysis result of CSB-YP618980HU could indicate that this peptide derived from Yeast-expressed Homo sapiens (Human) RCN1.



Based on the SEQUEST from database of Yeast host and target protein, the LC-MS/MS Analysis result of CSB-YP618980HU could indicate that this peptide derived from Yeast-expressed Homo sapiens (Human) RCN1.

Reconstitution

We recommend that this vial be briefly centrifuged prior to opening to bring the contents to the bottom. Please reconstitute protein in deionized sterile water to a concentration of 0.1-1.0 mg/mL. We recommend to add 5-50% of glycerol (final concentration) and aliquot for long-term storage at -20°C/-80°C. Our default final concentration of glycerol is 50%. Customers could use it as reference.

Shelf Life

The shelf life is related to many factors, storage state, buffer ingredients, storage temperature and the stability of the protein itself. Generally, the shelf life of liquid form is 6 months at -20°C/-80°C. The shelf life of lyophilized form is 12 months at -20°C/-80°C.