

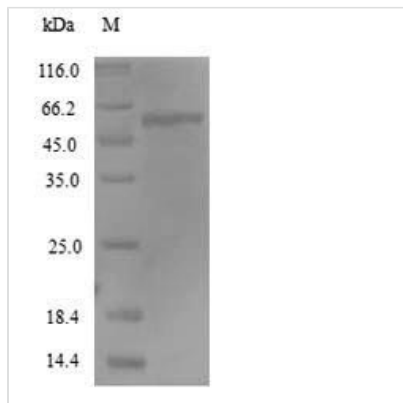


Recombinant Human Receptor-type tyrosine-protein phosphatase-like N (PTPRN), partial

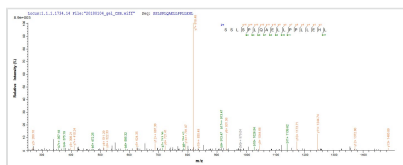
Product Code	CSB-YP613703HU
Relevance	Implicated in neuroendocrine secretory processes. May be involved in processes specific for neurosecretory granules, such as their biogenesis, trafficking or regulated exocytosis or may have a general role in neuroendocrine functions. Seems to lack intrinsic enzyme activity. May play a role in the regulation of secretory granules via its interaction with SNTB2.
Abbreviation	Recombinant Human PTPRN protein, partial
Storage	The shelf life is related to many factors, storage state, buffer ingredients, storage temperature and the stability of the protein itself. Generally, the shelf life of liquid form is 6 months at -20°C/-80°C. The shelf life of lyophilized form is 12 months at -20°C/-80°C.
Uniprot No.	Q16849
Alias	Islet cell antigen 512 Short name: ICA 512 Islet cell autoantigen 3 PTP IA-2
Product Type	Recombinant Protein
Immunogen Species	Homo sapiens (Human)
Purity	Greater than 90% as determined by SDS-PAGE.
Sequence	VSAHGCLFDRRLCSHLEVCIQDGLFGQCQVGVGQARPLLQVTSPVLQRLQGV LRQLMSQGLSWHDDLTYVISQEMERIPRLRPPEPRPRDRSGLAPKRPGPAG ELLLQDIPTGSAPAAQHRLPQPPVGKGGAGASSLSPLQAELLPLLEHLLLPP QPPHPSLSYEPALLQPYLFHQFGSRDGSRVSEGSPGMVSVGPLPKAEAPALF SRTASKGIFGDHPGHSYGDLPGPSPAQLFQDSGLLYLAQELPAPSRARVPRLP EQGSSSRAEDSPEGYEKEGLGDRGEKPASPAVQPDAAALQRLA AVL LAGYGVEL RQLTPEQLSTLLTLLQLLPKGAGRNPGGVVNVGADIKKTMEGPVEGRDTAELP ARTSPMPGHPTASPTSSEVQQVPSPVSSEPPKAARPPVTPVLLEKKSPLGQS QPTVAGQPSARPAEEYGYIVTDQKPLSLAAGVKLLEILAEHVMSSGSFINIS VVGPAITFRIRHNEQNLADVTQQAGLVKSELEAQTGLQILQTGVGQREEAA AVLPQTAHSTSPMR
Research Area	Signal Transduction
Source	Yeast
Target Names	PTPRN
Protein Names	Recommended name: Receptor-type tyrosine-protein phosphatase-like N Short name= R-PTP-N Alternative name(s): Islet cell antigen 512 Short name= ICA 512 Islet cell autoantigen 3 PTP IA-2
Expression Region	35-575aa
Notes	Repeated freezing and thawing is not recommended. Store working aliquots at 4°C for up to one week.

Tag Info	N-terminal 6xHis-tagged
Mol. Weight	59.3kDa
Protein Length	Extracellular Domain

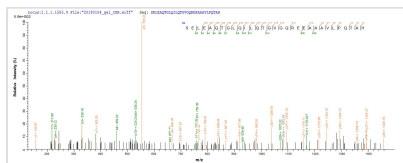
Image



(Tris-Glycine gel) Discontinuous SDS-PAGE (reduced) with 5% enrichment gel and 15% separation gel.



Based on the SEQUEST from database of Yeast host and target protein, the LC-MS/MS Analysis result of CSB-YP613703HU could indicate that this peptide derived from Yeast-expressed Homo sapiens (Human) PTPRN.



Based on the SEQUEST from database of Yeast host and target protein, the LC-MS/MS Analysis result of CSB-YP613703HU could indicate that this peptide derived from Yeast-expressed Homo sapiens (Human) PTPRN.

Reconstitution

We recommend that this vial be briefly centrifuged prior to opening to bring the contents to the bottom. Please reconstitute protein in deionized sterile water to a concentration of 0.1-1.0 mg/mL. We recommend to add 5-50% of glycerol (final concentration) and aliquot for long-term storage at -20°C/-80°C. Our default final concentration of glycerol is 50%. Customers could use it as reference.

Shelf Life

The shelf life is related to many factors, storage state, buffer ingredients, storage temperature and the stability of the protein itself. Generally, the shelf life of liquid form is 6 months at -20°C/-80°C. The shelf life of lyophilized form is 12 months at -20°C/-80°C.