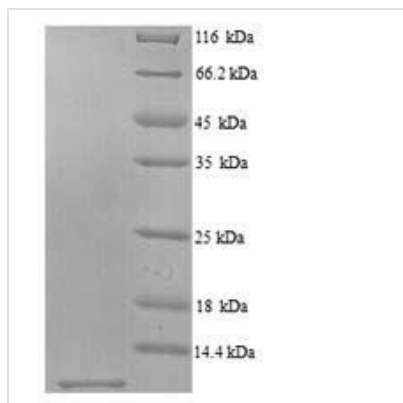




# Recombinant Mouse Scrapie-responsive protein 1 (Scrg1)

<b>Product Code</b>	CSB-YP526023MO
<b>Abbreviation</b>	Recombinant Mouse Scrg1 protein
<b>Storage</b>	The shelf life is related to many factors, storage state, buffer ingredients, storage temperature and the stability of the protein itself. Generally, the shelf life of liquid form is 6 months at -20°C/-80°C. The shelf life of lyophilized form is 12 months at -20°C/-80°C.
<b>Uniprot No.</b>	O88745
<b>Alias</b>	Scrapie-responsive gene 1 protein ;ScRG-1
<b>Product Type</b>	Recombinant Protein
<b>Immunogen Species</b>	Mus musculus (Mouse)
<b>Purity</b>	Greater than 90% as determined by SDS-PAGE.
<b>Sequence</b>	MPSSRLSCYRKLLKDRNCHNLPEGRADLKLIDANVQHFFWDGKGCEMICYCN FSELLCCPKDVFFGPKISFVIPCNNH
<b>Research Area</b>	Others
<b>Source</b>	Yeast
<b>Target Names</b>	Scrg1
<b>Protein Names</b>	Recommended name: Scrapie-responsive protein 1 Alternative name(s): Scrapie-responsive gene 1 protein Short name= ScRG-1
<b>Expression Region</b>	21-98aa
<b>Notes</b>	Repeated freezing and thawing is not recommended. Store working aliquots at 4°C for up to one week.
<b>Tag Info</b>	N-terminal 6xHis-tagged
<b>Mol. Weight</b>	11.0kDa
<b>Protein Length</b>	Full Length of Mature Protein

## Image



(Tris-Glycine gel) Discontinuous SDS-PAGE (reduced) with 5% enrichment gel and 15% separation gel.



## Description

The recombinant Mouse Scrg1 protein is encoded by the gene of Scrg1 (21-98aa). The gene of Scrg1 was cloned in a system (Yeast) that supported the expression of Scrg1 and translation of messenger RNA. Modification of Scrg1 by recombinant DNA technology could lead to the expression of the target protein. The protein was fused with N-terminal 6xHis tag in the production. The purity is 90% determined by SDS-PAGE.

Scrg1 is a protein coding gene that encodes Scrapie-responsive protein 1. According to some studies, Scrg1 may have the following features. The protein SCRG1 secreted by hMSCs and its receptor BST1 are positive regulators of self-renewal, migration and osteogenic differentiation. Scrg1 is induced in TSE and brain injury and is associated with autophagy. SCRG1 is a potential marker of autophagy in TSE. Inhibition of linc-SCRG1 may be a novel therapeutic approach to inactivate hematopoietic stem cells and attenuate human liver fibrosis. SCRG1 is involved in cell growth inhibition and differentiation during DEX-dependent chondrogenesis. SCRG1 inhibits LPS-induced CCL22 production via activation of ERK1/2 in mouse macrophage Raw264.7 cells. Linc-SCRG1 acts as a ceRNA for miR26a to depress SKP2 and accelerates hepatocellular carcinoma progression.

## Reconstitution

We recommend that this vial be briefly centrifuged prior to opening to bring the contents to the bottom. Please reconstitute protein in deionized sterile water to a concentration of 0.1-1.0 mg/mL. We recommend to add 5-50% of glycerol (final concentration) and aliquot for long-term storage at -20°C/-80°C. Our default final concentration of glycerol is 50%. Customers could use it as reference.

## Shelf Life

The shelf life is related to many factors, storage state, buffer ingredients, storage temperature and the stability of the protein itself. Generally, the shelf life of liquid form is 6 months at -20°C/-80°C. The shelf life of lyophilized form is 12 months at -20°C/-80°C.