



Recombinant Human Podocalyxin (PODXL), partial

Product Code	CSB-YP518830HU
Relevance	Involved in the regulation of both adhesion and cell morphology and cancer progression. Function as an anti-adhesive molecule that maintains an open filtration pathway between neighboring foot processes in the podocyte by charge repulsion. Acts as a pro-adhesive molecule, enhancing the adherence of cells to immobilized ligands, increasing the rate of migration and cell-cell contacts in an integrin-dependent manner. Induces the formation of apical actin-dependent microvilli. Involved in the formation of a preapical plasma mbrane subdomain to set up initial epithelial polarization and the apical lumen formation during renal tubulogenesis. Plays a role in cancer development and aggressiveness by inducing cell migration and invasion through its interaction with the actin-binding protein EZR. Affects EZR-dependent signaling events, leading to increased activities of the MAPK and PI3K pathways in cancer cells.
Abbreviation	Recombinant Human PODXL protein, partial
Storage	The shelf life is related to many factors, storage state, buffer ingredients, storage temperature and the stability of the protein itself. Generally, the shelf life of liquid form is 6 months at -20°C/-80°C. The shelf life of lyophilized form is 12 months at -20°C/-80°C.
Uniprot No.	O00592
Alias	GCTM-2 antigen;Gp200Podocalyxin-like protein 1 ;PC ;PCLP-1
Product Type	Recombinant Protein
Immunogen Species	Homo sapiens (Human)
Purity	Greater than 90% as determined by SDS-PAGE.
Sequence	Q _N A _T Q _T T _T D _S S _N K _T A _P T _P A _S S _V T _I M _A T _D T _A Q _Q S _T V _P T _S K _A N _E I _L A _S V _K A _T T _L G _V S _S D _S P _G T _T T _T L _A Q _Q V _S G _P V _N T _T V _A R _G G _G S _G N _P T _T T _T I _E S _P K _S T _K S _A D _T T _T V _A T _S T A _T A _K P _N T _T S _S Q _N G _A E _D T _T N _S G _G K _S S _H S _V T _T D _L T _S T _K A _E H _L T _T P _H P _T S _P L _S P _R Q P _T S _T H _P V _A T _P T _S S _G H _D H _L M _K I _S S _S S _S T _V A _I P _G Y _T F _T S _P G _M T _T T _L L _E T _V F _H H _V S _Q A _G L _E L _L T _S G _D L _P T _L A _S Q _S A _G I _T A _S S _V I _S Q _R T _Q Q _T S _S Q _M P _A S _S T _A P _S S _Q E _T V _Q P T _S P _A T _A L _R T _P T _L P _E T _M S _S S _P T _A A _S T _T H _R Y _P K _T P _S P _T V _A H _E S _N W _A K _C E _D L _E T _Q T Q _S E _K Q _L V _L N _L T _G N _T L _C A _G G _A S _D E _K L _I S _L I _C R _A V _K A _T F _N P _A Q _D K _C G _I R _L A _S V _P G _S Q _T V _V V _K E _I T _I H _T K _L P _A K _D V _Y E _R L _K D _K W _D E _L K _E A _G V _S D _M K _L G _D Q _G P _P E _E A _E D _R F
Source	Yeast
Target Names	PODXL
Protein Names	Recommended name: Podocalyxin Alternative name(s): GCTM-2 antigen Gp200 Podocalyxin-like protein 1 Short name= PC Short name= PCLP-1
Expression Region	32-458aa
Notes	Repeated freezing and thawing is not recommended. Store working aliquots at



4°C for up to one week.

Tag Info

N-terminal 6xHis-tagged

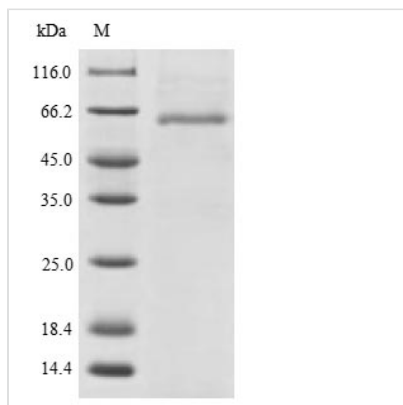
Mol. Weight

46.2kDa

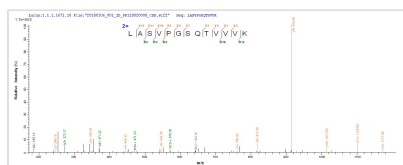
Protein Length

Partial

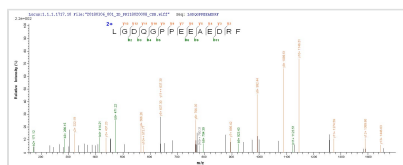
Image



(Tris-Glycine gel) Discontinuous SDS-PAGE (reduced) with 5% enrichment gel and 15% separation gel.



Based on the SEQUEST from database of Yeast host and target protein, the LC-MS/MS Analysis result of CSB-YP518830HU could indicate that this peptide derived from Yeast-expressed Homo sapiens (Human) PODXL.



Based on the SEQUEST from database of Yeast host and target protein, the LC-MS/MS Analysis result of CSB-YP518830HU could indicate that this peptide derived from Yeast-expressed Homo sapiens (Human) PODXL.

Reconstitution

We recommend that this vial be briefly centrifuged prior to opening to bring the contents to the bottom. Please reconstitute protein in deionized sterile water to a concentration of 0.1-1.0 mg/mL. We recommend to add 5-50% of glycerol (final concentration) and aliquot for long-term storage at -20°C/-80°C. Our default final concentration of glycerol is 50%. Customers could use it as reference.

Shelf Life

The shelf life is related to many factors, storage state, buffer ingredients, storage temperature and the stability of the protein itself. Generally, the shelf life of liquid form is 6 months at -20°C/-80°C. The shelf life of lyophilized form is 12 months at -20°C/-80°C.