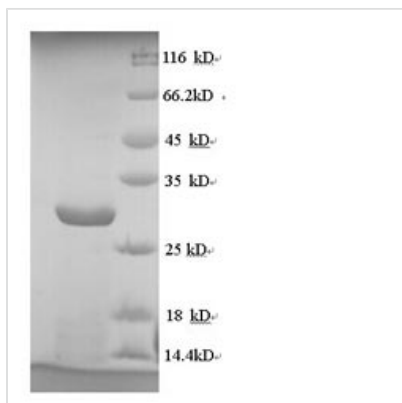




Recombinant Human cytomegalovirus Envelope glycoprotein L (gL)

Product Code	CSB-YP515269HWW
Relevance	The heterodimer glycoprotein H-glycoprotein L is required for the fusion of viral and plasma mbranes leading to virus entry into the host cell. Mbrane fusion is mediated by the fusion machinery composed at least of gB and the heterodimer gH/gL .
Abbreviation	Recombinant Human cytomegalovirus gL protein
Storage	The shelf life is related to many factors, storage state, buffer ingredients, storage temperature and the stability of the protein itself. Generally, the shelf life of liquid form is 6 months at -20°C/-80°C. The shelf life of lyophilized form is 12 months at -20°C/-80°C.
Uniprot No.	F5HCH8
Product Type	Recombinant Protein
Immunogen Species	Human cytomegalovirus (strain Merlin) (HHV-5) (Human herpesvirus 5)
Purity	Greater than 90% as determined by SDS-PAGE.
Sequence	AAVSVAPTAAEKVPAECPELTRRCLLGEVFEGDKYESWLRPLVNVVTGRDGPL SQLIRYRPVTPEAANSVLLDEAFDLTLALLYNNPDQLRALLTLLSSDTAPRWMT VMRGYSECGDGSPAVYTCVDDLRCRGYDLTRLSYGRSIFTEHVLGFELVPPSLF NVVVAIRNEATRTNRAVRLPVSTAAPEGITLFYGLYNAVKEFCLRHQLDPPLL RHLDKYYAGLPPELKQTRVNLPAHSRYGPQAVDAR
Research Area	Others
Source	Yeast
Target Names	gL
Protein Names	Recommended name: Envelope glycoprotein L Short name= gL
Expression Region	31-278aa
Notes	Repeated freezing and thawing is not recommended. Store working aliquots at 4°C for up to one week.
Tag Info	N-terminal 6xHis-tagged
Mol. Weight	29.5 kDa
Protein Length	Full Length of Mature Protein
Image	



(Tris-Glycine gel) Discontinuous SDS-PAGE (reduced) with 5% enrichment gel and 15% separation gel.

Reconstitution

We recommend that this vial be briefly centrifuged prior to opening to bring the contents to the bottom. Please reconstitute protein in deionized sterile water to a concentration of 0.1-1.0 mg/mL. We recommend to add 5-50% of glycerol (final concentration) and aliquot for long-term storage at -20°C/-80°C. Our default final concentration of glycerol is 50%. Customers could use it as reference.

Shelf Life

The shelf life is related to many factors, storage state, buffer ingredients, storage temperature and the stability of the protein itself. Generally, the shelf life of liquid form is 6 months at -20°C/-80°C. The shelf life of lyophilized form is 12 months at -20°C/-80°C.