



Recombinant Human rhinovirus A serotype 89

Genome polyprotein, partial

Product Code	CSB-YP362073HQD
Relevance	<p>Capsid protein VP1: Forms an icosahedral capsid of pseudo T=3 symmetry with capsid proteins VP2 and VP3. The capsid is 300 Angstroms in diameter, composed of 60 copies of each capsid protein and enclosing the viral positive strand RNA genome. Capsid protein VP1 mainly forms the vertices of the capsid. Capsid protein VP1 interacts with host cell receptor to provide virion attachment to target host cells. This attachment induces virion internalization. Tyrosine kinases are probably involved in the entry process. After binding to its receptor, the capsid undergoes conformational changes. Capsid protein VP1 N-terminus (that contains an amphipathic alpha-helix) and capsid protein VP4 are externalized. Together, they shape a pore in the host mbrane through which viral genome is translocated to host cell cytoplasm. After genome has been released, the channel shrinks .Capsid protein VP2: Forms an icosahedral capsid of pseudo T=3 symmetry with capsid proteins VP2 and VP3. The capsid is 300 Angstroms in diameter, composed of 60 copies of each capsid protein and enclosing the viral positive strand RNA genome .Capsid protein VP3: Forms an icosahedral capsid of pseudo T=3 symmetry with capsid proteins VP2 and VP3. The capsid is 300 Angstroms in diameter, composed of 60 copies of each capsid protein and enclosing the viral positive strand RNA genome .Capsid protein VP4: Lies on the inner surface of the capsid shell. After binding to the host receptor, the capsid undergoes conformational changes. Capsid protein VP4 is released, Capsid protein VP1 N-terminus is externalized, and together, they shape a pore in the host mbrane through which the viral genome is translocated into the host cell cytoplasm. After genome has been released, the channel shrinks .Capsid protein VP0: Component of immature procapsids, which is cleaved into capsid proteins VP4 and VP2 after maturation. Allows the capsid to rain inactive before the maturation step .Protein 2A: Cysteine protease that cleaves viral polyprotein and specific host proteins. It is responsible for the cleavage between the P1 and P2 regions, first cleavage occurring in the polyprotein. Cleaves also the host translation initiation factor EIF4G1, in order to shut down the capped cellular mRNA translation. Inhibits the host nucleus-cytoplasm protein and RNA trafficking by cleaving host mbers of the nuclear pores .Protein 2B: Plays an essential role in the virus replication cycle by acting as a viroporin. Creates a pore in the host reticulum endoplasmic and as a consequence releases Ca²⁺ in the cytoplasm of infected cell. In turn, high levels of cytoplasmic calcium may trigger mbrane trafficking and transport of viral ER-associated proteins to viroplasms, sites of viral genome replication .Protein 2C: Induces and associates with structural rearrangents of intracellular mbranes. Displays RNA-binding, nucleotide binding and NTPase activities. May play a role in virion morphogenesis and viral RNA encapsidation by interacting with the capsid protein VP3 .Protein 3AB: Localizes the viral replication complex to the surface of mbranous vesicles. Together with protein 3CD binds the Cis-Active RNA Elent (CRE) which is involved in RNA synthesis initiation. Acts as a cofactor to stimulate the activity of 3D polymerase, maybe through a nucleid</p>



acid chaperone activity .Protein 3A: Localizes the viral replication complex to the surface of mbranous vesicles. It inhibits host cell endoplasmic reticulum-to-Golgi apparatus transport and causes the dissassbly of the Golgi complex, possibly through GBF1 interaction. This would result in depletion of MHC, trail receptors and IFN receptors at the host cell surface .Viral protein genome-linked: acts as a primer for viral RNA replication and rains covalently bound to viral genomic RNA. VPg is uridylylated prior to priming replication into VPg-pUpU. The oril viral genomic sequence may act as a tplate for this. The VPg-pUpU is then used as primer on the genomic RNA poly(A) by the RNA-dependent RNA polymerase to replicate the viral genome. VPg may be roved in the cytoplasm by an unknown enzyme termed "unlinkase". VPg is not cleaved off virion genomes because replicated genomic RNA are encapsidated at the site of replication .Protein 3CD: Is involved in the viral replication complex and viral polypeptide maturation. It exhibits protease activity with a specificity and catalytic efficiency that is different from protease 3C. Protein 3CD lacks polymerase activity. The 3C domain in the context of protein 3CD may have an RNA binding activity .Protease 3C: cleaves host DDX58/RIG-I and thus contributes to the inhibition of type I interferon production. Cleaves also host PABPC1 .RNA-directed RNA polymerase: Replicates the viral genomic RNA on the surface of intracellular mbranes. May form linear arrays of subunits that propagate along a strong head-to-tail interaction called interface-I. Covalently attaches UMP to a tyrosine of VPg, which is used to prime RNA synthesis. The positive stranded RNA genome is first replicated at virus induced mbranous vesicles, creating a dsRNA genomic replication form. This dsRNA is then used as tplate to synthesize positive stranded RNA genomes. ss+RNA genomes are either translated, replicated or encapsidated ..

Abbreviation	Recombinant Human rhinovirus A serotype 89 Genome polyprotein, partial
Storage	The shelf life is related to many factors, storage state, buffer ingredients, storage temperature and the stability of the protein itself. Generally, the shelf life of liquid form is 6 months at -20°C/-80°C. The shelf life of lyophilized form is 12 months at -20°C/-80°C.
Uniprot No.	P07210
Product Type	Recombinant Protein
Immunogen Species	Human rhinovirus A serotype 89 (strain 41467-Gallo) (HRV-89)
Purity	Greater than 90% as determined by SDS-PAGE.
Sequence	NPVENYIDSVLNEVLVVPNIQPSTSVSSHAAPALDAAETGHTSSVQPEDMIETR YVITDQTRDETSIESFLGRSGCIAMIEFNTSSDKTEHDKIGKGFKTWKVSLQEM AQIRRKYELFTYTRFDSEITIVTAAAAQGNDSGHIVLQFMYVPPGAPVPEKRDD YTWQSGTNASVFWQEGQPYPRFTIPFMSIASAYYMFYDGYDGD SAASKYGSV VTNDMG TICVRIVTSNQKHDSNIVCRIYHKAKHIKAWCPRPPRAVAYQH THSTN YIPSNGEATTQIKTRPDVFTVTNV
Research Area	Others
Source	Yeast
Protein Names	Recommended name: Genome polyproteinCleaved into the following 12 chains: 1. Protein VP0Alternative name(s): VP4-VP2 Protein VP4Alternative name(s):



P1A Virion protein 4 Protein VP2Alternative name(s): P1B Virion protein 2 Pr

Expression Region

575-866aa

Notes

Repeated freezing and thawing is not recommended. Store working aliquots at 4°C for up to one week.

Tag Info

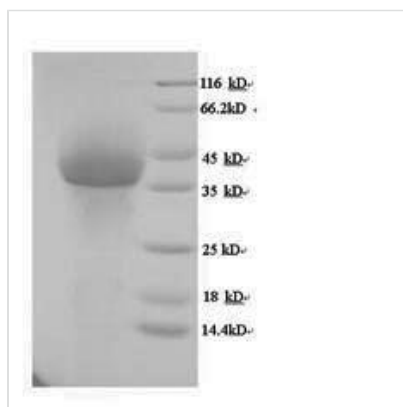
N-terminal 6xHis-tagged

Mol. Weight

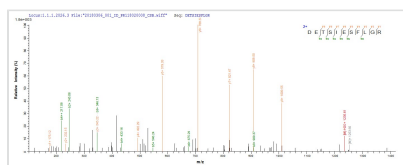
34.6 kDa

Protein Length

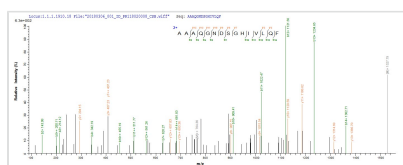
Partial

Image


(Tris-Glycine gel) Discontinuous SDS-PAGE (reduced) with 5% enrichment gel and 15% separation gel.



Based on the SEQUEST from database of Yeast host and target protein, the LC-MS/MS Analysis result of CSB-YP362073HQD could indicate that this peptide derived from Yeast-expressed Homo sapiens (Human) N/A.



Based on the SEQUEST from database of Yeast host and target protein, the LC-MS/MS Analysis result of CSB-YP362073HQD could indicate that this peptide derived from Yeast-expressed Homo sapiens (Human) N/A.

Reconstitution

We recommend that this vial be briefly centrifuged prior to opening to bring the contents to the bottom. Please reconstitute protein in deionized sterile water to a concentration of 0.1-1.0 mg/mL. We recommend to add 5-50% of glycerol (final concentration) and aliquot for long-term storage at -20°C/-80°C. Our default final concentration of glycerol is 50%. Customers could use it as reference.

Shelf Life

The shelf life is related to many factors, storage state, buffer ingredients, storage temperature and the stability of the protein itself. Generally, the shelf life of liquid form is 6 months at -20°C/-80°C. The shelf life of lyophilized form is 12 months at -20°C/-80°C.