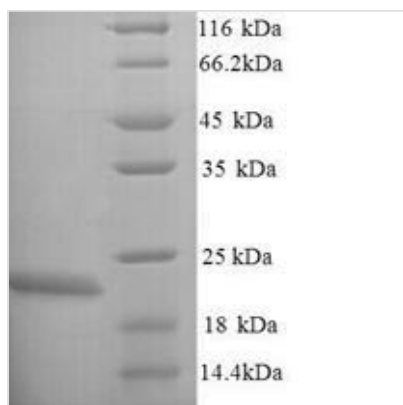




Recombinant Escherichia coli O6:H1 Lipopolysaccharide export system protein LptC (lptC)

Product Code	CSB-YP360015EGX
Relevance	Involved in the assbly of lipopolysaccharide (LPS). Required for the translocation of LPS from the inner mbrane to the outer mbrane. Facilitates the transfer of LPS from the inner mbrane to the periplasmic protein LptA. Could be a docking site for LptA.
Abbreviation	Recombinant E.coli O6:H1 lptC protein
Storage	The shelf life is related to many factors, storage state, buffer ingredients, storage temperature and the stability of the protein itself. Generally, the shelf life of liquid form is 6 months at -20°C/-80°C. The shelf life of lyophilized form is 12 months at -20°C/-80°C.
Uniprot No.	P0ADW0
Product Type	Recombinant Protein
Immunogen Species	Escherichia coli O6:H1 (strain CFT073 / ATCC 700928 / UPEC)
Purity	Greater than 90% as determined by SDS-PAGE.
Sequence	MSKARRWVIVLSLAVLVMIGINMAEKDDTAQVVNNNDPTYKSEHTDTLVYNP EGALSYRLIAQHVEYYSDQAVSWFTQPVLTTFDKDKIPTWSVKADKAKLTNDR MLYLYGHVEVNALVPDSQLRRITTDNAQINLVTQDVTSEDLVTLYGTTFNSSGL KMRGNLRSKNAELIEKVRTSYEIQNKQTQP
Research Area	Others
Source	Yeast
Target Names	lptC
Protein Names	Recommended name: Lipopolysaccharide export system protein lptC
Expression Region	1-191aa
Notes	Repeated freezing and thawing is not recommended. Store working aliquots at 4°C for up to one week.
Tag Info	N-terminal 6xHis-tagged
Mol. Weight	23.7kDa
Protein Length	Full Length
Image	



(Tris-Glycine gel) Discontinuous SDS-PAGE (reduced) with 5% enrichment gel and 15% separation gel.

Reconstitution

We recommend that this vial be briefly centrifuged prior to opening to bring the contents to the bottom. Please reconstitute protein in deionized sterile water to a concentration of 0.1-1.0 mg/mL. We recommend to add 5-50% of glycerol (final concentration) and aliquot for long-term storage at -20°C/-80°C. Our default final concentration of glycerol is 50%. Customers could use it as reference.

Shelf Life

The shelf life is related to many factors, storage state, buffer ingredients, storage temperature and the stability of the protein itself. Generally, the shelf life of liquid form is 6 months at -20°C/-80°C. The shelf life of lyophilized form is 12 months at -20°C/-80°C.