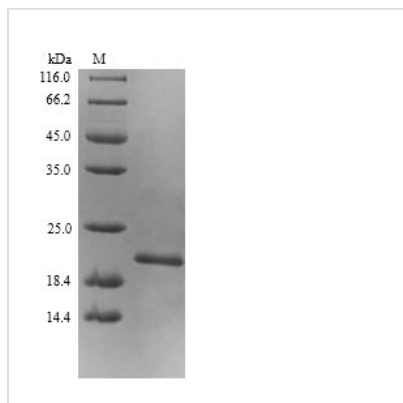




Recombinant Escherichia coli Elongation factor P (efp)

Product Code	CSB-YP358853ENV
Relevance	Involved in peptide bond synthesis. Alleviates ribosome stalling that occurs when 3 or more consecutive Pro residues or the sequence PPG is present in a protein, possibly by augmenting the peptidyl transferase activity of the ribosome. Beta-lysylation at Lys-34 is required for alleviation. The Pro codons and their context do not affect activity; only consecutive Pro residues (not another amino acid) are affected by EF-P. Has stimulatory effects on peptide bond formation between ribosome-bound initiator tRNA(fMet) and puromycin, and N-acetyl-Phe tRNA(Phe)-primed poly(U)-directed poly(Phe) synthesis.
Abbreviation	Recombinant E.coli efp protein
Storage	The shelf life is related to many factors, storage state, buffer ingredients, storage temperature and the stability of the protein itself. Generally, the shelf life of liquid form is 6 months at -20°C/-80°C. The shelf life of lyophilized form is 12 months at -20°C/-80°C.
Uniprot No.	P0A6N4
Alias	Short name:EF-P
Product Type	Recombinant Protein
Immunogen Species	Escherichia coli (strain K12)
Purity	Greater than 90% as determined by SDS-PAGE.
Sequence	ATYYSNDFRAGLKIMLDGEPYAVEASEFVKPGKGQAFARVKLRRLLTGTRVEK TFKSTDSAEGADVDMNLTYLYNDGEFWHFMNNETFEQLSADAKAIGDNAKW LLDQAECIVTLWNGQPISVTPPNFVELEIVDTPGLKGDTAGTGGKPATLSTGA VVKVPLFVQIGEVIKVDTRSGEYVSRVK
Research Area	Microbiology
Source	Yeast
Target Names	efp
Protein Names	Recommended name: Elongation factor P Short name= EF-P
Expression Region	2-188aa
Notes	Repeated freezing and thawing is not recommended. Store working aliquots at 4°C for up to one week.
Tag Info	N-terminal 6xHis-tagged
Mol. Weight	22.5kDa
Protein Length	Full Length of Mature Protein
Image	



(Tris-Glycine gel) Discontinuous SDS-PAGE (reduced) with 5% enrichment gel and 15% separation gel.

Reconstitution

We recommend that this vial be briefly centrifuged prior to opening to bring the contents to the bottom. Please reconstitute protein in deionized sterile water to a concentration of 0.1-1.0 mg/mL. We recommend to add 5-50% of glycerol (final concentration) and aliquot for long-term storage at -20°C/-80°C. Our default final concentration of glycerol is 50%. Customers could use it as reference.

Shelf Life

The shelf life is related to many factors, storage state, buffer ingredients, storage temperature and the stability of the protein itself. Generally, the shelf life of liquid form is 6 months at -20°C/-80°C. The shelf life of lyophilized form is 12 months at -20°C/-80°C.