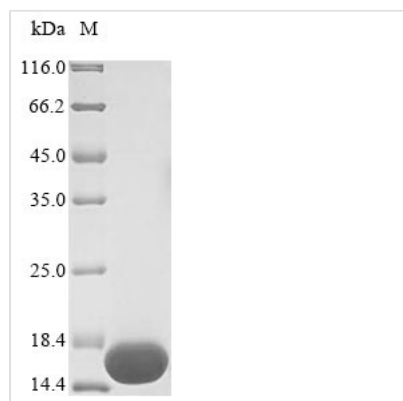




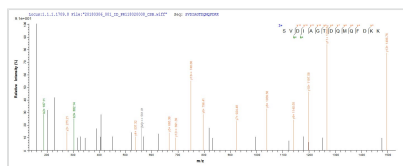
Recombinant Bordetella bronchiseptica Azurin (BB3856)

Product Code	CSB-YP358313BTY
Abbreviation	Recombinant Bordetella bronchiseptica Azurin protein
Storage	The shelf life is related to many factors, storage state, buffer ingredients, storage temperature and the stability of the protein itself. Generally, the shelf life of liquid form is 6 months at -20°C/-80°C. The shelf life of lyophilized form is 12 months at -20°C/-80°C.
Uniprot No.	P0A321
Product Type	Recombinant Protein
Immunogen Species	Bordetella bronchiseptica (strain ATCC BAA-588 / NCTC 13252 / RB50) (Alcaligenes bronchisepticus)
Purity	Greater than 90% as determined by SDS-PAGE.
Sequence	AECSVDIAGTDQMQFDKKAIEVSKSCKQFTVNLKHTGKLPRNVMGHNWVLTK TADMQAVEKDGAAGLDNQYLKAGDTRVLAHTKVLGGGESDSVTFDVAKLAA GDDYTFFCSFPGHGALMKGTCLKLVD
Research Area	Others
Source	Yeast
Target Names	BB3856
Protein Names	Recommended name: Azurin
Expression Region	22-150aa
Notes	Repeated freezing and thawing is not recommended. Store working aliquots at 4°C for up to one week.
Tag Info	N-terminal 6xHis-tagged
Mol. Weight	15.8 kDa
Protein Length	Full Length of Mature Protein

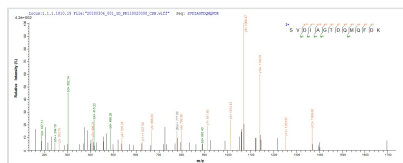
Image



(Tris-Glycine gel) Discontinuous SDS-PAGE (reduced) with 5% enrichment gel and 15% separation gel.



Based on the SEQUEST from database of Yeast host and target protein, the LC-MS/MS Analysis result of CSB-YP358313BTY could indicate that this peptide derived from Yeast-expressed *Bordetella bronchiseptica* (strain ATCC BAA-588 / NCTC 13252 / RB50) (*Alcaligenes bronchisepticus*) BB3856.



Based on the SEQUEST from database of Yeast host and target protein, the LC-MS/MS Analysis result of CSB-YP358313BTY could indicate that this peptide derived from Yeast-expressed *Bordetella bronchiseptica* (strain ATCC BAA-588 / NCTC 13252 / RB50) (*Alcaligenes bronchisepticus*) BB3856.

Reconstitution

We recommend that this vial be briefly centrifuged prior to opening to bring the contents to the bottom. Please reconstitute protein in deionized sterile water to a concentration of 0.1-1.0 mg/mL. We recommend to add 5-50% of glycerol (final concentration) and aliquot for long-term storage at -20°C/-80°C. Our default final concentration of glycerol is 50%. Customers could use it as reference.

Shelf Life

The shelf life is related to many factors, storage state, buffer ingredients, storage temperature and the stability of the protein itself. Generally, the shelf life of liquid form is 6 months at -20°C/-80°C. The shelf life of lyophilized form is 12 months at -20°C/-80°C.