

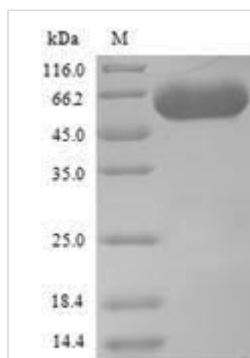


Recombinant *Saccharomyces cerevisiae* Serine--tRNA ligase, Cytoplasmic domain (SES1)

Product Code	CSB-YP357079SVG
Relevance	Catalyzes the attachment of serine to tRNA(Ser). Is also probably able to aminoacylate tRNA(Sec) with serine, to form the misacylated tRNA L-seryl-tRNA(Sec), which will be further converted into selenocysteinyl-tRNA(Sec).
Abbreviation	Recombinant <i>Saccharomyces cerevisiae</i> SES1 protein
Storage	The shelf life is related to many factors, storage state, buffer ingredients, storage temperature and the stability of the protein itself. Generally, the shelf life of liquid form is 6 months at -20°C/-80°C. The shelf life of lyophilized form is 12 months at -20°C/-80°C.
Uniprot No.	P07284
Alias	Seryl-tRNA synthetase Short name: SerRS Seryl-tRNA(Ser/Sec) synthetase
Product Type	Recombinant Protein
Immunogen Species	<i>Saccharomyces cerevisiae</i> (strain ATCC 204508 / S288c) (Baker's yeast)
Purity	Greater than 90% as determined by SDS-PAGE.
Sequence	MLDINQFIEDKGGNPELIRQSQKARNASVEIVDEIISDYKDWVKTRFELDELNKK FNKLQKDIGLKFKNKEDASGLLAEKEKLTQQKKELTEKEQQEDKDLKKKVQV GNIVHPSVVVSNDENNELVRTWKPEDLEAVGPIASVTGKPASLSHHEILLRLD GYDPDRGVKICGHRGYFFRNYGVFLNQALINYGLQFLAAKGYPQLQAPVMMNK ELMSKTAQLSEFDEELYKVIDGEDEKYLIATSEQPISAYHSGEWFEPKPEQLPI HYVGYSSCFRREAGSHGKDAWGVRVHAFEKIEQFVITEPEKSWEEFEKMISY SEEFYKSLKLPYRIVGIVSGELNNAAAKKYDLEAWFPYQKEYKELVSCSNCTDY QSRNLEIRCGIKKMGDREKKYVHCLNSTLAATQRALCCILENYQTEDGLVVPE VLRKYIPGEPEFLPFVNELPKNSTSSKDKKKKN
Research Area	Microbiology
Source	Yeast
Target Names	SES1
Protein Names	Recommended name: Serine--tRNA ligase, cytoplasmic EC= 6.1.1.11 Alternative name(s): Seryl-tRNA synthetase Short name= SerRS Seryl-tRNA(Ser/Sec) synthetase
Expression Region	1-462aa
Notes	Repeated freezing and thawing is not recommended. Store working aliquots at 4°C for up to one week.
Tag Info	N-terminal 6xHis-tagged
Mol. Weight	55.3kDa
Protein Length	Full Length



Image



(Tris-Glycine gel) Discontinuous SDS-PAGE (reduced) with 5% enrichment gel and 15% separation gel.

Reconstitution

We recommend that this vial be briefly centrifuged prior to opening to bring the contents to the bottom. Please reconstitute protein in deionized sterile water to a concentration of 0.1-1.0 mg/mL. We recommend to add 5-50% of glycerol (final concentration) and aliquot for long-term storage at -20°C/-80°C. Our default final concentration of glycerol is 50%. Customers could use it as reference.

Shelf Life

The shelf life is related to many factors, storage state, buffer ingredients, storage temperature and the stability of the protein itself. Generally, the shelf life of liquid form is 6 months at -20°C/-80°C. The shelf life of lyophilized form is 12 months at -20°C/-80°C.