



Recombinant Fruit fly Accessory gland-specific peptide 70A (SP)

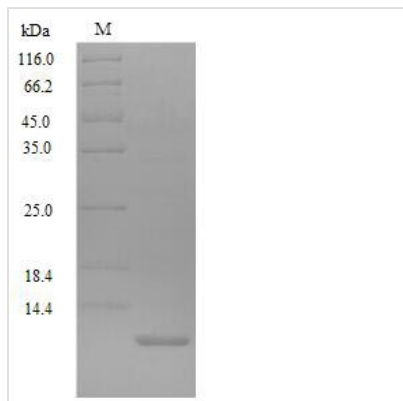
| | |
|--------------------------|--|
| Product Code | CSB-YP356570DLU |
| Relevance | Male seminal protein which triggers short- and long-term post-mating behavioral responses (PMR) in female Drosophila (PubMed:3135120, PubMed:19249273, PubMed:20308537, PubMed:19793753, PubMed:15694303, PubMed:24089336). Binds initially to sperm where it is later cleaved to release an active peptide within the female reproductive tract. Signals via the sex peptide receptor (SPR) in female flies; may also act via other receptors (PubMed:20458515, PubMed:20308537, PubMed:24089336). Moderates the activity of distinct neuronal circuitries in the female genital tract to promote specific PMRs including: enhanced ovulation, increased egg laying rate, increased feeding/foraging rate, induced antimicrobial peptide synthesis, reduced mating receptivity, reduced day-time sleep and reduced lifespan in multiple mated females (PubMed:3135120, PubMed:15694303, PubMed:19249273, PubMed:19793753, PubMed:24089336). |
| Abbreviation | Recombinant Drosophila melanogaster SP protein |
| Storage | The shelf life is related to many factors, storage state, buffer ingredients, storage temperature and the stability of the protein itself. Generally, the shelf life of liquid form is 6 months at -20°C/-80°C. The shelf life of lyophilized form is 12 months at -20°C/-80°C. |
| Uniprot No. | P05623 |
| Alias | Paragonial peptide B Sex peptide Short name: SP |
| Product Type | Recombinant Protein |
| Immunogen Species | Drosophila melanogaster (Fruit fly) |
| Purity | Greater than 90% as determined by SDS-PAGE. |
| Sequence | WEWPWNRKPTKFIPIPSNPRDKWCRLNLGPAWGGRC |
| Research Area | Others |
| Source | Yeast |
| Target Names | SP |
| Protein Names | Recommended name: Accessory gland-specific peptide 70A Alternative name(s): Paragonial peptide B Sex peptide Short name= SP |
| Expression Region | 20-55aa |
| Notes | Repeated freezing and thawing is not recommended. Store working aliquots at 4°C for up to one week. |
| Tag Info | Tag-Free |
| Mol. Weight | 4.3kDa |



Protein Length

Full Length of Mature Protein

Image



(Tris-Glycine gel) Discontinuous SDS-PAGE (reduced) with 5% enrichment gel and 15% separation gel.

Reconstitution

We recommend that this vial be briefly centrifuged prior to opening to bring the contents to the bottom. Please reconstitute protein in deionized sterile water to a concentration of 0.1-1.0 mg/mL. We recommend to add 5-50% of glycerol (final concentration) and aliquot for long-term storage at -20°C/-80°C. Our default final concentration of glycerol is 50%. Customers could use it as reference.

Shelf Life

The shelf life is related to many factors, storage state, buffer ingredients, storage temperature and the stability of the protein itself. Generally, the shelf life of liquid form is 6 months at -20°C/-80°C. The shelf life of lyophilized form is 12 months at -20°C/-80°C.