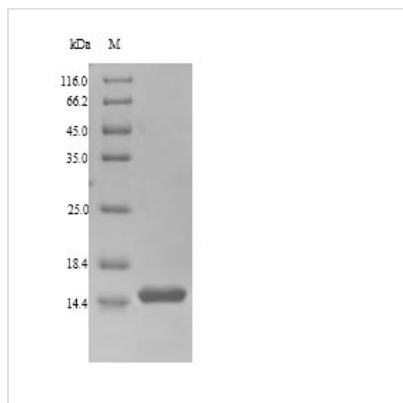




# Recombinant Bertholletia excelsa 2S sulfur-rich seed storage protein 1 (BE2S1), partial

<b>Product Code</b>	CSB-YP356250BGJ
<b>Relevance</b>	This is a 2S seed storage protein.
<b>Abbreviation</b>	Recombinant Brazil nut BE2S1 protein, partial
<b>Storage</b>	The shelf life is related to many factors, storage state, buffer ingredients, storage temperature and the stability of the protein itself. Generally, the shelf life of liquid form is 6 months at -20°C/-80°C. The shelf life of lyophilized form is 12 months at -20°C/-80°C.
<b>Uniprot No.</b>	P04403
<b>Alias</b>	Alternative name(s): Allergen: Ber e 1 Cleaved into the following 2 chains: 2S sulfur-rich seed storage protein small chain 1 Alternative name(s): 2S albumin 1 small subunit 2S sulfur-rich seed storage protein large chain 1B Alternative name(s): 2S albumin 1 large subunit
<b>Product Type</b>	Recombinant Protein
<b>Immunogen Species</b>	Bertholletia excelsa (Brazil nut)
<b>Purity</b>	Greater than 90% as determined by SDS-PAGE.
<b>Sequence</b>	QEECREQMQRQQMLSHCRMYMRQQMEESPYQTMPRRGMPEPHMSECCEQL EGMDESCRCEGLRMMMMRMQQEEMQPRGEQMRRMMRLAENIPSRCNLSP MRCPMGGS
<b>Research Area</b>	Allergen
<b>Source</b>	Yeast
<b>Target Names</b>	BE2S1
<b>Protein Names</b>	Recommended name: 2S sulfur-rich seed storage protein 1 Alternative name(s): Allergen= Ber e 1 Cleaved into the following 2 chains: 1. 2S sulfur-rich seed storage protein small chain 1 Alternative name(s): 2S albumin 1 small subunit
<b>Expression Region</b>	37-142aa
<b>Notes</b>	Repeated freezing and thawing is not recommended. Store working aliquots at 4°C for up to one week.
<b>Tag Info</b>	N-terminal 6xHis-tagged
<b>Mol. Weight</b>	14.8kDa
<b>Protein Length</b>	Partial
<b>Image</b>	



(Tris-Glycine gel) Discontinuous SDS-PAGE (reduced) with 5% enrichment gel and 15% separation gel.

### Reconstitution

We recommend that this vial be briefly centrifuged prior to opening to bring the contents to the bottom. Please reconstitute protein in deionized sterile water to a concentration of 0.1-1.0 mg/mL. We recommend to add 5-50% of glycerol (final concentration) and aliquot for long-term storage at -20°C/-80°C. Our default final concentration of glycerol is 50%. Customers could use it as reference.

### Shelf Life

The shelf life is related to many factors, storage state, buffer ingredients, storage temperature and the stability of the protein itself. Generally, the shelf life of liquid form is 6 months at -20°C/-80°C. The shelf life of lyophilized form is 12 months at -20°C/-80°C.