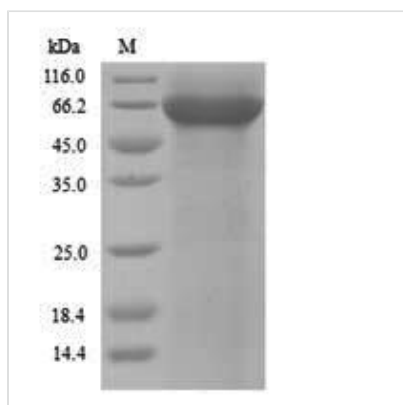


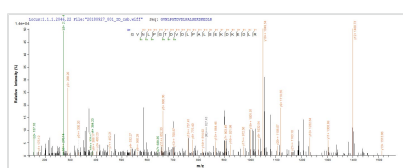


Recombinant *Saccharomyces cerevisiae* Pyruvate kinase 1 (CDC19)

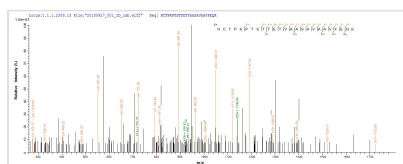
Product Code	CSB-YP355535SVG
Relevance	The activity is regulated by glucose levels. Activated by fructose-1,6-bisphosphate.
Abbreviation	Recombinant <i>Saccharomyces cerevisiae</i> CDC19 protein
Storage	The shelf life is related to many factors, storage state, buffer ingredients, storage temperature and the stability of the protein itself. Generally, the shelf life of liquid form is 6 months at -20°C/-80°C. The shelf life of lyophilized form is 12 months at -20°C/-80°C.
Uniprot No.	P00549
Alias	cell division cycle protein 19
Product Type	Recombinant Protein
Immunogen Species	<i>Saccharomyces cerevisiae</i> (strain ATCC 204508 / S288c) (Baker's yeast)
Purity	Greater than 90% as determined by SDS-PAGE.
Sequence	<p>SRLERLTSLNVVAGSDLRRTSIIGTIGPKTNNPETLVALRKAGLNIVRMNFSHGS YEYHKSVIDNARKSEELYPGRPLAIALDTKGPEIRTGTTTNDVDYPIPPNHEMIF TTDDKYAKACDDKIMYVDYKNITKVISAGRIIYVDDGVLSFQVLEVVDKTLKVK ALNAGKICSHKGVNLPGTDVDLPALSEKDKEDLRFGVKNGVHMFASFIRTAN DVLTIREVLGEGQKDVKIIVKIENQQGVNNFDEILKVTDGVMVARGDLGIEIPAP EVLAVQKKLIAKSNLAGKPVICATQMLESMTYNPRPTRAEVSDVGNAILDGADC VMLSGETAKGNYPINAVTTMAETAVIAEQAIAYLPNYDDMRNCTPKPTSTTETV AASAVAAVFEQKAKAIIVLSTSGTTPRLVSKYRPNCPIILVTRCPRAARFSHLR GVFPFVFEKEPVSDWTDDVEARINFGIEKAKEFGILKKGDTYVSIQGFKAGAGH SNTLQVSTV</p>
Research Area	Epigenetics and Nuclear Signaling
Source	Yeast
Target Names	CDC19
Protein Names	Recommended name: Pyruvate kinase 1 Short name= PK 1 EC= 2.7.1.40 Alternative name(s): cell division cycle protein 19
Expression Region	2-500aa
Notes	Repeated freezing and thawing is not recommended. Store working aliquots at 4°C for up to one week.
Tag Info	N-terminal 6xHis-tagged
Mol. Weight	56.4kDa
Protein Length	Full Length of Mature Protein
Image	



(Tris-Glycine gel) Discontinuous SDS-PAGE (reduced) with 5% enrichment gel and 15% separation gel.



Based on the SEQUEST from database of Yeast host and target protein, the LC-MS/MS Analysis result of CSB-YP355535SVG could indicate that this peptide derived from Yeast-expressed *Saccharomyces cerevisiae* (strain ATCC 204508 / S288c) (Baker's yeast) CDC19.



Based on the SEQUEST from database of Yeast host and target protein, the LC-MS/MS Analysis result of CSB-YP355535SVG could indicate that this peptide derived from Yeast-expressed *Saccharomyces cerevisiae* (strain ATCC 204508 / S288c) (Baker's yeast) CDC19.

Reconstitution

We recommend that this vial be briefly centrifuged prior to opening to bring the contents to the bottom. Please reconstitute protein in deionized sterile water to a concentration of 0.1-1.0 mg/mL. We recommend to add 5-50% of glycerol (final concentration) and aliquot for long-term storage at -20°C/-80°C. Our default final concentration of glycerol is 50%. Customers could use it as reference.

Shelf Life

The shelf life is related to many factors, storage state, buffer ingredients, storage temperature and the stability of the protein itself. Generally, the shelf life of liquid form is 6 months at -20°C/-80°C. The shelf life of lyophilized form is 12 months at -20°C/-80°C.