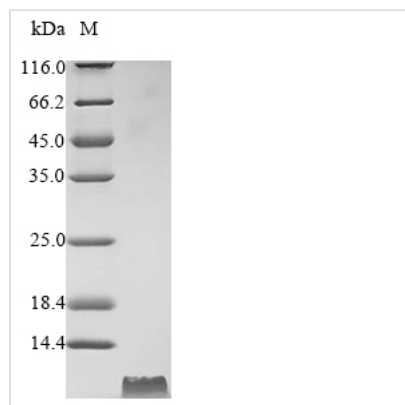




# Recombinant Bovine Cathelicidin-6 (CATHL6)

<b>Product Code</b>	CSB-YP345751BO
<b>Abbreviation</b>	Recombinant Bovine CATHL6 protein
<b>Storage</b>	The shelf life is related to many factors, storage state, buffer ingredients, storage temperature and the stability of the protein itself. Generally, the shelf life of liquid form is 6 months at -20°C/-80°C. The shelf life of lyophilized form is 12 months at -20°C/-80°C.
<b>Uniprot No.</b>	P54228
<b>Storage Buffer</b>	Tris-based buffer,50% glycerol
<b>Product Type</b>	Recombinant Proteins
<b>Immunogen Species</b>	Bos taurus (Bovine)
<b>Purity</b>	Greater than 90% as determined by SDS-PAGE.
<b>Sequence</b>	GRFKRFRKKFKKLFKKLSPVIPLLHLG
<b>Research Area</b>	Others
<b>Source</b>	Yeast
<b>Target Names</b>	CATHL6
<b>Protein Names</b>	Recommended name: Cathelicidin-6 Alternative name(s): Antibacterial peptide BMAP-27 Myeloid antibacterial peptide 27
<b>Expression Region</b>	132-158aa
<b>Notes</b>	Repeated freezing and thawing is not recommended. Store working aliquots at 4°C for up to one week.
<b>Tag Info</b>	Tag-Free
<b>Mol. Weight</b>	3.3 kDa
<b>Protein Length</b>	Full Length of Mature Protein

## Image



(Tris-Glycine gel) Discontinuous SDS-PAGE (reduced) with 5% enrichment gel and 15% separation gel.

## Shelf Life

The shelf life is related to many factors, storage state, buffer ingredients, storage temperature and the stability of the protein itself.



Generally, the shelf life of liquid form is 6 months at -20°C/-80°C. The shelf life of lyophilized form is 12 months at -20°C/-80°C.