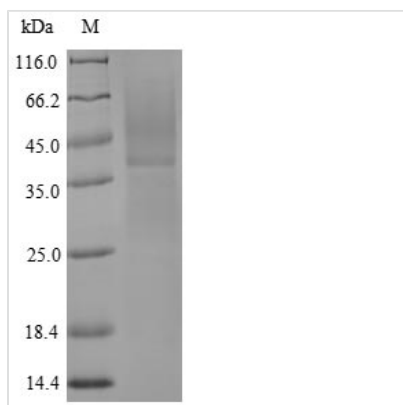




Recombinant Tachypleus tridentatus clotting factor C, partial

Product Code	CSB-YP335355TAH
Relevance	This enzyme is closely associated with an endotoxin-sensitive hemolymph coagulation system which may play important roles in both hemostasis and host defense mechanisms. Its active form catalyzes the activation of factor B.
Abbreviation	Recombinant Tachypleus tridentatus clotting factor C protein, partial
Storage	The shelf life is related to many factors, storage state, buffer ingredients, storage temperature and the stability of the protein itself. Generally, the shelf life of liquid form is 6 months at -20°C/-80°C. The shelf life of lyophilized form is 12 months at -20°C/-80°C.
Uniprot No.	P28175
Product Type	Recombinant Proteins
Immunogen Species	Tachypleus tridentatus (Japanese horseshoe crab)
Purity	Greater than 85% as determined by SDS-PAGE.
Sequence	IWNGNSTEIGQWPWQAGISRWLADHNMWFLQCGGSLLNEKWIVTAAHCVTY SATAEIIDPSQFKIYLGKYYRDDSRDDDYVQVREALEIHVNPNYDPGNLNFIDIAL IQLKTPVTLTTRVQPICLPTDITTREHLKEGTLAVVTGWGLNENNTYSEMIQQAV LPVVAASTCEEYKEADLPLTVTENMFCAGYKKGRYDACSGDSGGPLVFADD SRTERRWVLEGIVSWGSPSGCGKANQYGGFTKVNVLFSWIRQFI
Research Area	others
Source	Yeast
Target Names	N/A
Protein Names	Recommended name: Limulus clotting factor C Short name= FC EC= 3.4.21.84Cleaved into the following 4 chains: 1. Limulus clotting factor C heavy chain 2. Limulus clotting factor C light chain 3. Limulus clotting factor C chain 4. Limulus clotting factor C chain
Expression Region	763-1019aa
Notes	Repeated freezing and thawing is not recommended. Store working aliquots at 4°C for up to one week.
Tag Info	N-terminal 6xHis-tagged
Mol. Weight	30.8kDa
Protein Length	Partial
Image	



(Tris-Glycine gel) Discontinuous SDS-PAGE (reduced) with 5% enrichment gel and 15% separation gel.

Shelf Life

The shelf life is related to many factors, storage state, buffer ingredients, storage temperature and the stability of the protein itself. Generally, the shelf life of liquid form is 6 months at -20°C/-80°C. The shelf life of lyophilized form is 12 months at -20°C/-80°C.