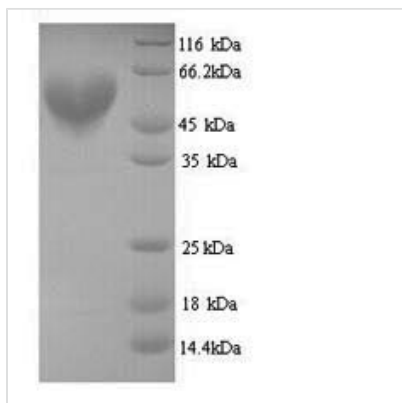


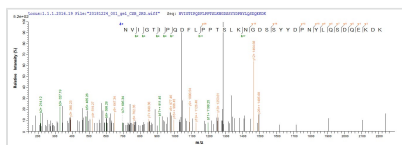


Recombinant Clostridium butyricum Botulinum neurotoxin type E, partial

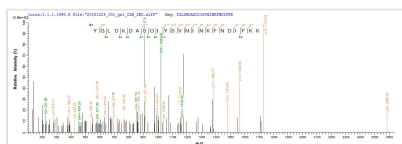
Product Code	CSB-YP327013DUK
Relevance	Botulinum toxin acts by inhibiting neurotransmitter release. It binds to peripheral neuronal synapses, is internalized and moves by retrograde transport up the axon into the spinal cord where it can move between postsynaptic and presynaptic neurons. It inhibits neurotransmitter release by acting as a zinc endopeptidase.
Abbreviation	Recombinant Clostridium butyricum Botulinum neurotoxin type E protein, partial
Storage	The shelf life is related to many factors, storage state, buffer ingredients, storage temperature and the stability of the protein itself. Generally, the shelf life of liquid form is 6 months at -20°C/-80°C. The shelf life of lyophilized form is 12 months at -20°C/-80°C.
Uniprot No.	P30995
Product Type	Recombinant Protein
Immunogen Species	Clostridium butyricum
Purity	Greater than 90% as determined by SDS-PAGE.
Sequence	PTINSFNYNDPVNNRTILYIKPGGCQQFYKSFNIMKNIWIIPERNVIGTIPQDFLP PTSLKNGDSSYYDPNYLQSDQEKDKFLKIVTKIFNRINDNLSGRILLEELSKANP YLGNDNTPDGDFIINDASAVPIQFSNGSQSILLPNVIIMGAEPDLFETNSSNISLR NNYMPSNHGFGSIAIVTFSPEYSFRFKDNSMNEFIQDPALTMHELIHSLHGLY GAKGITTKYTITQKQNPLITNIRGTNIEEFLTFGGTDLNIITSAQSNDIYTNLLADY KKIASKLSKVQVSNPLLNPYKDVFEAKYGLDKDASGIYSVNINKFNDIFKKLYSF TEFDLATKFQVKCRQTYIGQYKYFKLSNLLNDSIYNISEGYNINNLLKVNFRGQN ANLNPRIITPITGRGLVKKIIRFCKNIVSVKGIR
Research Area	Others
Source	Yeast
Protein Names	Recommended name: Botulinum neurotoxin type E Short name= BoNT/E EC= 3.4.24.69 Alternative name(s): Bontoxilysin-ECleaved into the following 2 chains: 1. Botulinum neurotoxin E light chain 2. Botulinum neurotoxin E heavy chain
Expression Region	2-422aa
Notes	Repeated freezing and thawing is not recommended. Store working aliquots at 4°C for up to one week.
Tag Info	N-terminal 6xHis-tagged
Mol. Weight	49.7kDa
Protein Length	Partial
Image	



(Tris-Glycine gel) Discontinuous SDS-PAGE (reduced) with 5% enrichment gel and 15% separation gel.



Based on the SEQUEST from database of Yeast host and target protein, the LC-MS/MS Analysis result of CSB-YP327013DUK could indicate that this peptide derived from Yeast-expressed *Clostridium butyricum* N/A.



Based on the SEQUEST from database of Yeast host and target protein, the LC-MS/MS Analysis result of CSB-YP327013DUK could indicate that this peptide derived from Yeast-expressed *Clostridium butyricum* N/A.

Reconstitution

We recommend that this vial be briefly centrifuged prior to opening to bring the contents to the bottom. Please reconstitute protein in deionized sterile water to a concentration of 0.1-1.0 mg/mL. We recommend to add 5-50% of glycerol (final concentration) and aliquot for long-term storage at -20°C/-80°C. Our default final concentration of glycerol is 50%. Customers could use it as reference.

Shelf Life

The shelf life is related to many factors, storage state, buffer ingredients, storage temperature and the stability of the protein itself. Generally, the shelf life of liquid form is 6 months at -20°C/-80°C. The shelf life of lyophilized form is 12 months at -20°C/-80°C.