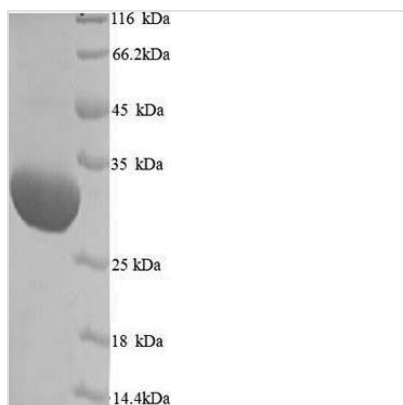




Recombinant Human rhinovirus 1A Genome polyprotein, partial

Product Code	CSB-YP326367HQA
Abbreviation	Recombinant Human rhinovirus 1A Genome polyprotein, partial
Storage	The shelf life is related to many factors, storage state, buffer ingredients, storage temperature and the stability of the protein itself. Generally, the shelf life of liquid form is 6 months at -20°C/-80°C. The shelf life of lyophilized form is 12 months at -20°C/-80°C.
Uniprot No.	P23008
Product Type	Recombinant Protein
Immunogen Species	Human rhinovirus 1A (HRV-1A)
Purity	Greater than 90% as determined by SDS-PAGE.
Sequence	NPVENYIDEVLNEVLVVPNIKESHHTTSNSAPLLDAAETGHTSNVQPEDAIETR YVITSQTRDEMSIESFLGRSGCVHISRIKVDYTDYNGQDINFTKWKITLQEMAQI RRKFELFTYVRFDSEITLVPCIAGRGDIGHIVMQYMYVPPGAPIPSKRNDFSW QSGTNMSIFWQHGGPFPFSLPFLSIASAYYMFYDGYDGDNTSSKYGSVVTN DMGTICSRIVTEKQKHSVVITTHIYHKAKHTKAWCPRPPRAVPYTHSHVTNYM PETGDVTTAIVRRNTITTA
Research Area	Others
Source	Yeast
Protein Names	Recommended name: Genome polyproteinCleaved into the following 5 chains: 1. Protein VP0Alternative name(s): VP4-VP2 Protein VP4Alternative name(s): P1A Virion protein 4 Protein VP2Alternative name(s): P1B Virion protein 2 Pro
Expression Region	571-857aa
Notes	Repeated freezing and thawing is not recommended. Store working aliquots at 4°C for up to one week.
Tag Info	N-terminal 6xHis-tagged
Mol. Weight	34.6 kDa
Protein Length	Partial
Image	



(Tris-Glycine gel) Discontinuous SDS-PAGE (reduced) with 5% enrichment gel and 15% separation gel.

Reconstitution

We recommend that this vial be briefly centrifuged prior to opening to bring the contents to the bottom. Please reconstitute protein in deionized sterile water to a concentration of 0.1-1.0 mg/mL. We recommend to add 5-50% of glycerol (final concentration) and aliquot for long-term storage at -20°C/-80°C. Our default final concentration of glycerol is 50%. Customers could use it as reference.

Shelf Life

The shelf life is related to many factors, storage state, buffer ingredients, storage temperature and the stability of the protein itself. Generally, the shelf life of liquid form is 6 months at -20°C/-80°C. The shelf life of lyophilized form is 12 months at -20°C/-80°C.