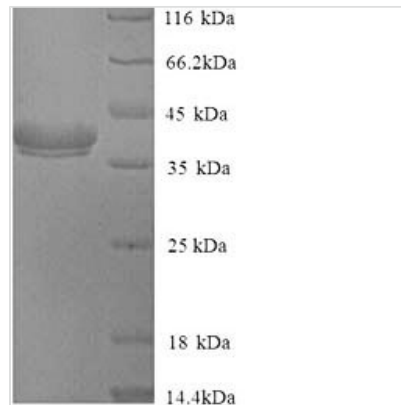




Recombinant Cryptomeria japonica Pectate lyase

1

Product Code	CSB-YP322455DYO
Relevance	Has pectate lyase activity.
Abbreviation	Recombinant Cryptomeria japonica Pectate lyase 1 protein
Storage	The shelf life is related to many factors, storage state, buffer ingredients, storage temperature and the stability of the protein itself. Generally, the shelf life of liquid form is 6 months at -20°C/-80°C. The shelf life of lyophilized form is 12 months at -20°C/-80°C.
Uniprot No.	P18632
Product Type	Recombinant Proteins
Immunogen Species	Cryptomeria japonica (Japanese cedar) (Cupressus japonica)
Purity	Greater than 90% as determined by SDS-PAGE.
Sequence	DNPIDSCWRGDSNWAQNRMKLADCAVGFGSSTMGGKGGDLTYVTNSDDDP VNPAPGTLRYGATRDRPLWIIFSGNMNIKLKMPMYIAGYKTFDGRGAQVYIGN GGPCVFIKRVSNNVIIHGLHLYGCSTSVLGNVLINESFGVEPVHPQDGDALTTLRT ATNIWIDHNSFSNSSDGLVDVTLSSSTGVTISNNLFFNHHKVMMLLGHDDAYSDD KSMKVTVAFNQFGPNCGQRMPRARYGLVHVANNNYDPWTIYAIGGSSNPTIL SEGNSTAPNESYKKQVTIRIGCKTSSSCSNWVWQSTQDVFYNGAYFVSSGK YEGGNIYTKKEAFNVENG NATPQLTKNAGVLTCSLSKRC
Research Area	Others
Source	Yeast
Target Names	N/A
Protein Names	Recommended name: Sugi basic protein Short name= SBP Alternative name(s): Allergen Cry j I Major allergen Cry j 1 Allergen= Cry j 1
Expression Region	22-374aa
Notes	Repeated freezing and thawing is not recommended. Store working aliquots at 4°C for up to one week.
Tag Info	N-terminal 6xHis-tagged
Mol. Weight	40.5kDa
Protein Length	Full Length of Mature Protein
Image	



(Tris-Glycine gel) Discontinuous SDS-PAGE (reduced) with 5% enrichment gel and 15% separation gel.

Shelf Life

The shelf life is related to many factors, storage state, buffer ingredients, storage temperature and the stability of the protein itself.

Generally, the shelf life of liquid form is 6 months at -20°C/-80°C. The shelf life of lyophilized form is 12 months at -20°C/-80°C.