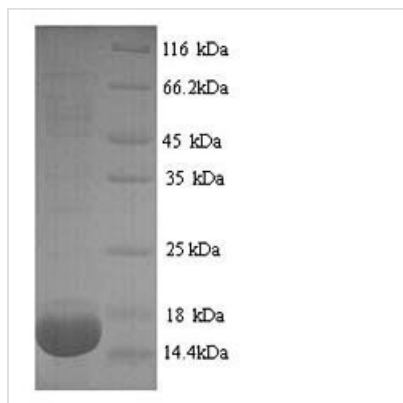




Recombinant Rat Phospholipase A2, membrane associated (Pla2g2a)

Product Code	CSB-YP321246RA
Relevance	Thought to participate in the regulation of the phospholipid metabolism in biomembranes including eicosanoid biosynthesis. Catalyzes the calcium-dependent hydrolysis of the 2-acyl groups in 3-sn-phosphoglycerides.
Abbreviation	Recombinant Rat Pla2g2a protein
Storage	The shelf life is related to many factors, storage state, buffer ingredients, storage temperature and the stability of the protein itself. Generally, the shelf life of liquid form is 6 months at -20°C/-80°C. The shelf life of lyophilized form is 12 months at -20°C/-80°C.
Uniprot No.	P14423
Alias	GIIC sPLA2Group IIA phospholipase A2;Phosphatidylcholine 2-acylhydrolase 2A
Product Type	Recombinant Protein
Immunogen Species	Rattus norvegicus (Rat)
Purity	Greater than 90% as determined by SDS-PAGE.
Sequence	SLLEFGQMILFKTGKRADVSYGFYGC HCGVGGRGSPKDATDWCCVTHDCCY NRLEKRGCGTKFLTYKFSYRGGQISCSTNQDSCRKQLCQCDKAAAEFCFARNK KSYSLKYQFYPNKFCKGKTPSC
Research Area	Others
Source	Yeast
Target Names	Pla2g2a
Protein Names	Recommended name: Phospholipase A2, membrane associated EC= 3.1.1.4 Alternative name(s): GIIC sPLA2 Group IIA phospholipase A2 Phosphatidylcholine 2-acylhydrolase 2A
Expression Region	22-146aa
Notes	Repeated freezing and thawing is not recommended. Store working aliquots at 4°C for up to one week.
Tag Info	N-terminal 6xHis-tagged
Mol. Weight	16.1kDa
Protein Length	Full Length of Mature Protein
Image	



(Tris-Glycine gel) Discontinuous SDS-PAGE (reduced) with 5% enrichment gel and 15% separation gel.

Reconstitution

We recommend that this vial be briefly centrifuged prior to opening to bring the contents to the bottom. Please reconstitute protein in deionized sterile water to a concentration of 0.1-1.0 mg/mL. We recommend to add 5-50% of glycerol (final concentration) and aliquot for long-term storage at -20°C/-80°C. Our default final concentration of glycerol is 50%. Customers could use it as reference.

Shelf Life

The shelf life is related to many factors, storage state, buffer ingredients, storage temperature and the stability of the protein itself. Generally, the shelf life of liquid form is 6 months at -20°C/-80°C. The shelf life of lyophilized form is 12 months at -20°C/-80°C.