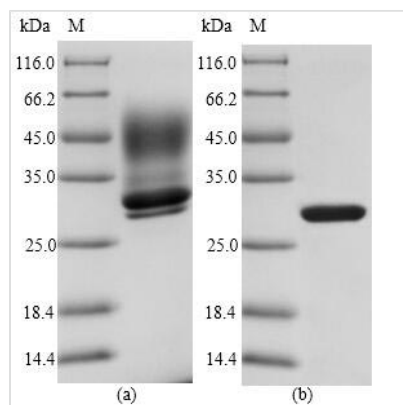


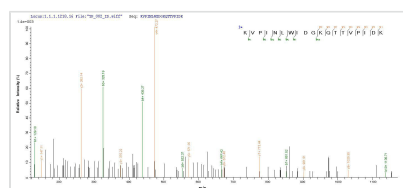


Recombinant Staphylococcus aureus Enterotoxin type E (entE)

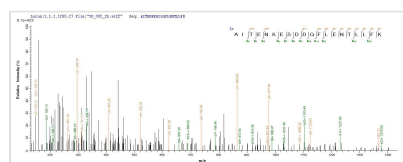
Product Code	CSB-YP320170FKZ
Relevance	Staphylococcal enterotoxins cause the intoxication staphylococcal food poisoning syndrome. The illness characterized by high fever, hypotension, diarrhea, shock, and in some cases death.
Abbreviation	Recombinant Staphylococcus aureus entE protein
Storage	The shelf life is related to many factors, storage state, buffer ingredients, storage temperature and the stability of the protein itself. Generally, the shelf life of liquid form is 6 months at -20°C/-80°C. The shelf life of lyophilized form is 12 months at -20°C/-80°C.
Uniprot No.	P12993
Alias	SEE
Product Type	Recombinant Protein
Immunogen Species	Staphylococcus aureus
Purity	Greater than 90% as determined by SDS-PAGE.
Sequence	SEEINEKDLRKKSELQRNALSNLRQIYYYNEKAITENKESDDQFLENTLLFKGFF TGHPWYNDLLVDLGSKDATNKYKGKKVDLYGAYYGYQCAGGTPNKTACMYG GVTLHDNNRLTEKKVPINLWIDGKQTTVPIDKVKTSKKEVTVQELDLQARHYL HGKFGLYNSDSFGGKVQRGLIVFHSSEGSTVSYDLFDAQGQYPDTLLRIYRDN KTINSEN LHIDLYLYTT
Research Area	Cell Biology
Source	Yeast
Target Names	entE
Protein Names	Recommended name: Enterotoxin type E Alternative name(s): SEE
Expression Region	28-257aa
Notes	Repeated freezing and thawing is not recommended. Store working aliquots at 4°C for up to one week.
Tag Info	N-terminal 6xHis-tagged
Mol. Weight	28.4kDa
Protein Length	Full Length of Mature Protein
Image	



(Tris-Glycine gel) Discontinuous SDS-PAGE (reduced) with 5% enrichment gel and 15% separation gel.



Based on the SEQUEST from database of Yeast host and target protein, the LC-MS/MS Analysis result of CSB-YP320170FKZ could indicate that this peptide derived from Yeast-expressed *Staphylococcus aureus* entE.



Based on the SEQUEST from database of Yeast host and target protein, the LC-MS/MS Analysis result of CSB-YP320170FKZ could indicate that this peptide derived from Yeast-expressed *Staphylococcus aureus* entE.

Description

A DNA sequence corresponding to 28-257aa of the *Staphylococcus aureus* Enterotoxin type E (entE) was expressed with an N-terminal 6xHis-tag in the yeast. The resulting protein is a full-length of the mature entE protein. It underwent the validation of LC-MS/MS analysis. Its purity reaches up to 90% determined by SDS-PAGE. It can be used to produce specific antibodies. This recombinant entE protein may also find uses in the studies of entE-associated cell biology.

As one of the most important microorganisms, *Staphylococcus aureus* causes various human diseases by secreting virulence factors staphylococcal superantigens (SAGs). EntE, also known as SEE, is one of the toxic SAGs, which can cross-link the T cell receptor (TCR) and major histocompatibility complex class II, triggering a massive T cell activation and hence disease. Depending on the dose and route of exposure, SEE and other SEs can cause food poisoning, acute and fatal respiratory distress, and toxic shock.

Reconstitution

We recommend that this vial be briefly centrifuged prior to opening to bring the contents to the bottom. Please reconstitute protein in deionized sterile water to a concentration of 0.1-1.0 mg/mL. We recommend to add 5-50% of glycerol (final concentration) and aliquot for long-term storage at -20°C/-80°C. Our default final concentration of glycerol is 50%. Customers could use it as reference.

Shelf Life

The shelf life is related to many factors, storage state, buffer ingredients, storage temperature and the stability of the protein itself. Generally, the shelf life of liquid form is 6 months at -20°C/-80°C. The shelf life



of lyophilized form is 12 months at -20°C/-80°C.