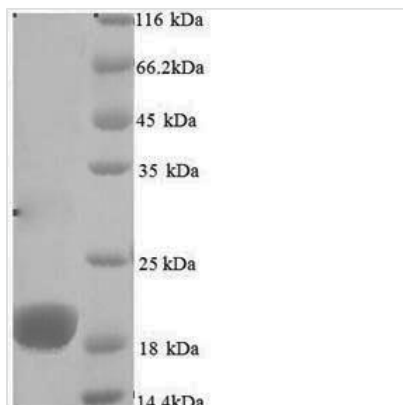




# Recombinant Human cytomegalovirus Envelope glycoprotein H (gH), partial

<b>Product Code</b>	CSB-YP319015HWV
<b>Relevance</b>	The heterodimer glycoprotein H-glycoprotein L is required for the fusion of viral and plasma mbranes leading to virus entry into the host cell. Mbrane fusion is mediated by the fusion machinery composed at least of gB and the heterodimer gH/gL . Fusion of with fibroblasts requires the additional receptor-binding protein gO, which forms a complex with gH/gL.
<b>Abbreviation</b>	Recombinant Human cytomegalovirus gH protein, partial
<b>Storage</b>	The shelf life is related to many factors, storage state, buffer ingredients, storage temperature and the stability of the protein itself. Generally, the shelf life of liquid form is 6 months at -20°C/-80°C. The shelf life of lyophilized form is 12 months at -20°C/-80°C.
<b>Uniprot No.</b>	P12824
<b>Product Type</b>	Recombinant Protein
<b>Immunogen Species</b>	Human cytomegalovirus (strain AD169) (HHV-5) (HCMV)
<b>Purity</b>	Greater than 90% as determined by SDS-PAGE.
<b>Sequence</b>	RYGADAASEALDPHAFHLLLNTYGRPIRFLRENTTQCTYNSSLRNSTVVRENAI SFNFFQSYNQYYVFHMPRCLFAGPLAEQFLNQVDLTETLERYQQRLNTYALVS KDLASYRSFSQQLKAQDSLQGPPTTVPPPIDLSIPHVWMPPTTPHDKGSH TTSGLHRPHFNQT
<b>Research Area</b>	Others
<b>Source</b>	Yeast
<b>Target Names</b>	gH
<b>Expression Region</b>	24-195aa
<b>Notes</b>	Repeated freezing and thawing is not recommended. Store working aliquots at 4°C for up to one week.
<b>Tag Info</b>	N-terminal 6xHis-tagged
<b>Mol. Weight</b>	21.8 kDa
<b>Protein Length</b>	Partial
<b>Image</b>	



(Tris-Glycine gel) Discontinuous SDS-PAGE (reduced) with 5% enrichment gel and 15% separation gel.

### Reconstitution

We recommend that this vial be briefly centrifuged prior to opening to bring the contents to the bottom. Please reconstitute protein in deionized sterile water to a concentration of 0.1-1.0 mg/mL. We recommend to add 5-50% of glycerol (final concentration) and aliquot for long-term storage at -20°C/-80°C. Our default final concentration of glycerol is 50%. Customers could use it as reference.

### Shelf Life

The shelf life is related to many factors, storage state, buffer ingredients, storage temperature and the stability of the protein itself. Generally, the shelf life of liquid form is 6 months at -20°C/-80°C. The shelf life of lyophilized form is 12 months at -20°C/-80°C.