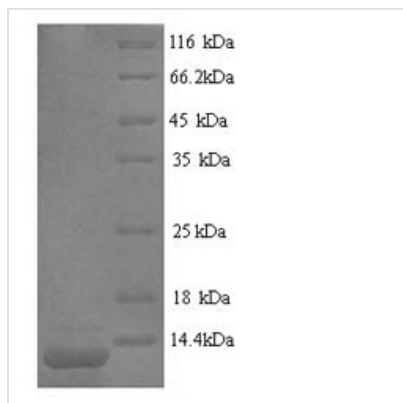




Recombinant Conus striatus Con-ikot-ikot

Product Code	CSB-YP316701DWI
Relevance	Potently and selectively blocks the desensitization of ionotropic glutamate AMPA receptor (GRIA1, GRIA2, GRIA3 and GRIA4). Can also open already desensitized GRIA1 receptors. Binds to a different site than does the drug cyclothiazide . The toxin acts like a straightjacket on the ligand-binding domain (LBD) "gating ring" of the receptor, restraining the domains via both intra- and interdimer cross-links such that agonist-induced closure of the LBD "clamshells" is transduced into an irislike expansion of the gating ring . Application of the toxin to hippocampal slices causes a large and rapid increase in resting AMPAR-mediated current leading to neuronal death .
Abbreviation	Recombinant Conus striatus Con-ikot-ikot protein
Storage	The shelf life is related to many factors, storage state, buffer ingredients, storage temperature and the stability of the protein itself. Generally, the shelf life of liquid form is 6 months at -20°C/-80°C. The shelf life of lyophilized form is 12 months at -20°C/-80°C.
Uniprot No.	P0CB20
Product Type	Recombinant Protein
Immunogen Species	Conus striatus (Striated cone)
Purity	Greater than 90% as determined by SDS-PAGE.
Sequence	SGPADCCRMKECCTDRVNECLQRYSGREDKFVSFCYQEATVTCGSFNEIVG CCYGYQMCMIRVVKPNLSGAHEACKTVSCGNPCA
Research Area	Others
Source	Yeast
Protein Names	Recommended name: Con-ikot-ikot
Expression Region	38-123aa
Notes	Repeated freezing and thawing is not recommended. Store working aliquots at 4°C for up to one week.
Tag Info	N-terminal 6xHis-tagged
Mol. Weight	11.4kDa
Protein Length	Full Length of Mature Protein
Image	



(Tris-Glycine gel) Discontinuous SDS-PAGE (reduced) with 5% enrichment gel and 15% separation gel.

Reconstitution

We recommend that this vial be briefly centrifuged prior to opening to bring the contents to the bottom. Please reconstitute protein in deionized sterile water to a concentration of 0.1-1.0 mg/mL. We recommend to add 5-50% of glycerol (final concentration) and aliquot for long-term storage at -20°C/-80°C. Our default final concentration of glycerol is 50%. Customers could use it as reference.

Shelf Life

The shelf life is related to many factors, storage state, buffer ingredients, storage temperature and the stability of the protein itself. Generally, the shelf life of liquid form is 6 months at -20°C/-80°C. The shelf life of lyophilized form is 12 months at -20°C/-80°C.