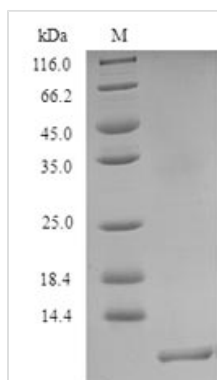




# Recombinant Ophiostoma ulmi CeRato-ulmin (CU)

<b>Product Code</b>	CSB-YP313268OBS
<b>Relevance</b>	Has been implicated in the pathogenicity of this fungus on ELM. Accumulates at, and plugs intercellular openings in the xylem, or interacts with host parenchyma cells, thereby enhancing respiration and electrolyte loss.
<b>Abbreviation</b>	Recombinant Ophiostoma ulmi CeRato-ulmin protein
<b>Storage</b>	The shelf life is related to many factors, storage state, buffer ingredients, storage temperature and the stability of the protein itself. Generally, the shelf life of liquid form is 6 months at -20°C/-80°C. The shelf life of lyophilized form is 12 months at -20°C/-80°C.
<b>Uniprot No.</b>	Q06153
<b>Alias</b>	Dutch elm disease toxin
<b>Product Type</b>	Recombinant Protein
<b>Immunogen Species</b>	Ophiostoma ulmi (Dutch elm disease fungus)
<b>Purity</b>	Greater than 90% as determined by SDS-PAGE.
<b>Sequence</b>	SDSYDPCTGLLQKSPQCCNTDILGVANLDCHGPPSVPTSPSQFQASCVADGG RSARCCTLSLLGLALVCTDPVGI
<b>Research Area</b>	Others
<b>Source</b>	Yeast
<b>Target Names</b>	CU
<b>Protein Names</b>	Recommended name: Cerato-ulmin Short name= CU Alternative name(s): Dutch elm disease toxin
<b>Expression Region</b>	26-100aa
<b>Notes</b>	Repeated freezing and thawing is not recommended. Store working aliquots at 4°C for up to one week.
<b>Tag Info</b>	N-terminal 6xHis-tagged
<b>Mol. Weight</b>	9.6kDa
<b>Protein Length</b>	Full Length of Mature Protein
<b>Image</b>	



(Tris-Glycine gel) Discontinuous SDS-PAGE (reduced) with 5% enrichment gel and 15% separation gel.

### Reconstitution

We recommend that this vial be briefly centrifuged prior to opening to bring the contents to the bottom. Please reconstitute protein in deionized sterile water to a concentration of 0.1-1.0 mg/mL. We recommend to add 5-50% of glycerol (final concentration) and aliquot for long-term storage at -20°C/-80°C. Our default final concentration of glycerol is 50%. Customers could use it as reference.

### Shelf Life

The shelf life is related to many factors, storage state, buffer ingredients, storage temperature and the stability of the protein itself. Generally, the shelf life of liquid form is 6 months at -20°C/-80°C. The shelf life of lyophilized form is 12 months at -20°C/-80°C.