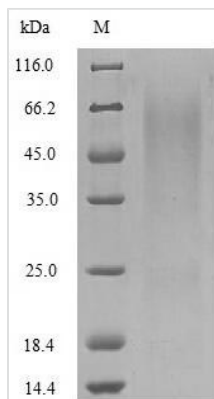




Recombinant Rotavirus A Outer capsid glycoprotein VP7

Product Code	CSB-YP311455RFS
Relevance	Outer capsid protein involved in attachment and possibly entry into the host epithelial cell. It is subsequently lost, together with VP4, following virus entry into the host cell. The outer layer contains 780 copies of VP7, grouped as 260 trimers. Rotavirus attachment and entry into the host cell probably involves multiple sequential contacts between the outer capsid proteins VP4 and VP7, and the cell receptors. In integrin-dependent strains, VP7 seems to essentially target the integrin heterodimers ITGAX/ITGB2 and ITGA5/ITGB3 at a postbinding stage, once the initial attachment by VP4 has been achieved
Abbreviation	Recombinant Rotavirus A Outer capsid glycoprotein VP7 protein
Storage	The shelf life is related to many factors, storage state, buffer ingredients, storage temperature and the stability of the protein itself. Generally, the shelf life of liquid form is 6 months at -20°C/-80°C. The shelf life of lyophilized form is 12 months at -20°C/-80°C.
Uniprot No.	Q00253
Product Type	Recombinant Protein
Immunogen Species	Rotavirus A (isolate RVA/Cow/Thailand/A44/1988/G10P8[11]) (RV-A)
Purity	Greater than 90% as determined by SDS-PAGE.
Sequence	QNYGINLPITGSMASYVNATKDKPFLTSTLCLYYPTTEARTEINDNEWTSTLSQ LFLTKGWPTGVSFYKEYDDIATFSVDPQLYCDYNIVLMRYNSSLELDMSELANL ILNEWLCNPMDITLYYYQQTDEANKWIAMGQSCTIKVCPLNTQTLGIGCQTTNA RTFEEVATAEKLVIDVDGVNHLKLDVTTATCTIRNCKKLGPRENVAVIQVGGA DILNITSDPTTAPQTERMMRINWKKWWQVFYTVVDYVNQIVQAMSKMSGSLNS AAFYYRV
Research Area	others
Source	Yeast
Protein Names	Recommended name: Outer capsid glycoprotein VP7
Expression Region	51-326aa
Notes	Repeated freezing and thawing is not recommended. Store working aliquots at 4°C for up to one week.
Tag Info	N-terminal 6xHis-tagged
Mol. Weight	33.3 kDa
Protein Length	Full Length of Mature Protein
Image	



(Tris-Glycine gel) Discontinuous SDS-PAGE (reduced) with 5% enrichment gel and 15% separation gel.

The reducing (R) protein migrates as 64 kDa in SDS-PAGE may be due to glycosylation.

Recommended Product

Reconstitution

We recommend that this vial be briefly centrifuged prior to opening to bring the contents to the bottom. Please reconstitute protein in deionized sterile water to a concentration of 0.1-1.0 mg/mL. We recommend to add 5-50% of glycerol (final concentration) and aliquot for long-term storage at -20°C/-80°C. Our default final concentration of glycerol is 50%. Customers could use it as reference.

Shelf Life

The shelf life is related to many factors, storage state, buffer ingredients, storage temperature and the stability of the protein itself.

Generally, the shelf life of liquid form is 6 months at -20°C/-80°C. The shelf life of lyophilized form is 12 months at -20°C/-80°C.