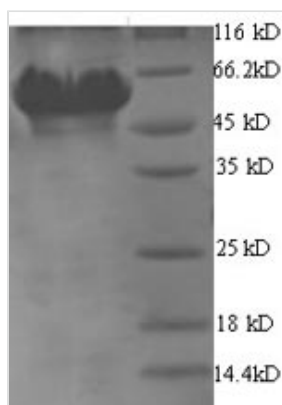




Recombinant Helicobacter pylori Glutamate--tRNA ligase 1 (gltX1)

Product Code	CSB-YP308728HUV
Relevance	Catalyzes the attachment of glutamate to tRNA(Glu) in a two-step reaction: glutamate is first activated by ATP to form Glu-AMP and then transferred to the acceptor end of tRNA(Glu).
Abbreviation	Recombinant Helicobacter pylori gltX1 protein
Storage	The shelf life is related to many factors, storage state, buffer ingredients, storage temperature and the stability of the protein itself. Generally, the shelf life of liquid form is 6 months at -20°C/-80°C. The shelf life of lyophilized form is 12 months at -20°C/-80°C.
Uniprot No.	P96551
Alias	Glutamyl-tRNA synthetase 1
Product Type	Recombinant Protein
Immunogen Species	Helicobacter pylori (strain ATCC 700392 / 26695) (Campylobacter pylori)
Purity	Greater than 90% as determined by SDS-PAGE.
Sequence	MSLIVTRFAPSPTGYLHIGGLRTAIFNYLFARANQGKFFLRIEDTDLRSNSIEAA NAIIEAFKWWVGLEYDGEILYQSKRFEIYKEYIQLKLLDEDKAYCYMSKEELDALR EEQKARKETPRYDNRYSRDFKGTTPPKGIEPVVRIKVPQNEVIGFNDGVKGEVKV NTNELDDFIIARSDGTPTYNFVVTIDDALMGITDVIRGDDHLSNTPKQIVLYKALN FKIPNFFHVPMLNNEEGQKLSKRHGATNVMDYQEMGYLKEALVNFLARLGWSY QDKEVFSMQELLELPKDLNSSPSCFSWHKLNWLNNAHYLKNQSVQELLKLL KPFSDLSHLNPTQLDRLLDALKERSQTLKELALKIDEVLIAPVEYEEKVFKKL NQALVMPLEKFKLELNKANFNDESALENAMRQIIIEEEKIKAGSFMQPLRLALL GKGGGIGLKEALFILGKTESVKRIEDFLKN
Research Area	Others
Source	Yeast
Target Names	gltX1
Protein Names	Recommended name: Glutamate--tRNA ligase 1 EC= 6.1.1.17 Alternative name(s): Glutamyl-tRNA synthetase 1 Short name= GluRS 1
Expression Region	1-463aa
Notes	Repeated freezing and thawing is not recommended. Store working aliquots at 4°C for up to one week.
Tag Info	N-terminal 6xHis-tagged
Mol. Weight	55.4kDa
Protein Length	Full Length
Image	



(Tris-Glycine gel) Discontinuous SDS-PAGE (reduced) with 5% enrichment gel and 15% separation gel.

Description

To achieve the expression of the recombinant *Helicobacter pylori* (strain ATCC 700392 / 26695) gltX1 protein in Yeast cells, a DNA fragment encoding the *Helicobacter pylori* (strain ATCC 700392 / 26695) gltX1 protein (1-463aa) is inserted into a plasmid vector, which is then transferred to Yeast cells. After screening positive cells, they are cultured and induced to generate the gltX1 protein. A N-terminal 6xHis tag is attached to the protein. Cells are lysed to collect the recombinant *Helicobacter pylori* (strain ATCC 700392 / 26695) gltX1 protein, which is purified through affinity purification and then identified using SDS-PAGE and subsequent staining of the gel with Coomassie Brilliant Blue. The purity of the obtained recombinant *Helicobacter pylori* (strain ATCC 700392 / 26695) gltX1 protein is over 90%.

Reconstitution

We recommend that this vial be briefly centrifuged prior to opening to bring the contents to the bottom. Please reconstitute protein in deionized sterile water to a concentration of 0.1-1.0 mg/mL. We recommend to add 5-50% of glycerol (final concentration) and aliquot for long-term storage at -20°C/-80°C. Our default final concentration of glycerol is 50%. Customers could use it as reference.

Shelf Life

The shelf life is related to many factors, storage state, buffer ingredients, storage temperature and the stability of the protein itself. Generally, the shelf life of liquid form is 6 months at -20°C/-80°C. The shelf life of lyophilized form is 12 months at -20°C/-80°C.