



# Recombinant Candida albicans pH-regulated antigen PRA1 (PRA1)

<b>Product Code</b>	CSB-YP308545CZD
<b>Relevance</b>	Cell surface protein involved in the host-parasite interaction during candidal infection. With MP65, represents a major component of the biofilm matrix. Sequesters zinc from host tissue and mediates leukocyte adhesion and migration. As a surface protein, binds the two human complement regulators CFH and CFHR1, as well as plasminogen PLG, mediates complement evasion and extra-cellular matrix interaction and/or degradation. As a released protein, enhances complement control in direct vicinity of the yeast and thus generates an additional protective layer which controls host complement attack, assisting the fungus in escaping host surveillance. Binds to host fluid-phase C3 and blocks cleavage of C3 to C3a and C3b, leading to inhibition of complement activation. Mediates also human complement control and complement evasion through binding to C4BPA, another human complement inhibitor, as well as through binding to host integrin alpha-M/beta-2. Decreases complement-mediated adhesion, as well as uptake of C.albicans by human macrophages.
<b>Abbreviation</b>	Recombinant Candida albicans PRA1 protein
<b>Storage</b>	The shelf life is related to many factors, storage state, buffer ingredients, storage temperature and the stability of the protein itself. Generally, the shelf life of liquid form is 6 months at -20°C/-80°C. The shelf life of lyophilized form is 12 months at -20°C/-80°C.
<b>Uniprot No.</b>	P87020
<b>Storage Buffer</b>	Tris-based buffer,50% glycerol
<b>Product Type</b>	Recombinant Proteins
<b>Immunogen Species</b>	Candida albicans (strain SC5314 / ATCC MYA-2876) (Yeast)
<b>Purity</b>	Greater than 90% as determined by SDS-PAGE. Greater than 90% as determined by SEC-HPLC.
<b>Sequence</b>	APVTVTRFVDASPTGYDWRADWVKGFPIDSSCNATQYNQLSTGLQEAQLLAE HARDHTLRFGSKSPFFRKYFGNETASAEVVGHFDDNVVGADKSSILFLCDDLDD KCKNDGWAGYWGRSNHSDQTIICDLSFVTRRYLTQLCSSGYTVSKSKTNIFW AGDLLHRFWHLKSIGQLVIEHYADTYEEVLELAQENSTYAVRNSNSLIYYALDV YAYDVTIPGEGCNGDGTSYKKSDFSSFEDSDSGSDSGASSTASSSHQHTDSN PSATTDANSHCHTHADGEVHC
<b>Research Area</b>	Signal Transduction
<b>Source</b>	Yeast
<b>Target Names</b>	PRA1
<b>Protein Names</b>	58 kDa fibrinogen-binding mannoproteinFBP1
<b>Expression Region</b>	16-299aa


**Notes**

Repeated freezing and thawing is not recommended. Store working aliquots at 4°C for up to one week.

**Tag Info**

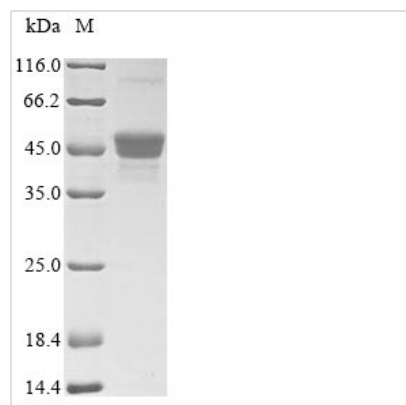
N-terminal 6xHis-tagged

**Mol. Weight**

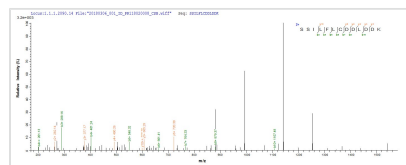
33.4 kDa

**Protein Length**

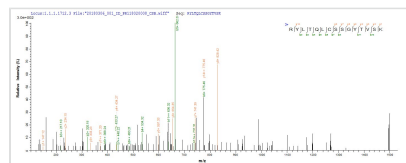
Full Length of Mature Protein

**Image**


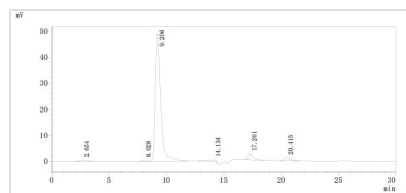
(Tris-Glycine gel) Discontinuous SDS-PAGE (reduced) with 5% enrichment gel and 15% separation gel.



Based on the SEQUEST from database of Yeast host and target protein, the LC-MS/MS Analysis result of CSB-YP308545CZD could indicate that this peptide derived from Yeast-expressed *Candida albicans* (strain SC5314 / ATCC MYA-2876) (Yeast) PRA1.



Based on the SEQUEST from database of Yeast host and target protein, the LC-MS/MS Analysis result of CSB-YP308545CZD could indicate that this peptide derived from Yeast-expressed *Candida albicans* (strain SC5314 / ATCC MYA-2876) (Yeast) PRA1.



The purity of PRA1 was greater than 90% as determined by SEC-HPLC

**Shelf Life**

The shelf life is related to many factors, storage state, buffer ingredients, storage temperature and the stability of the protein itself. Generally, the shelf life of liquid form is 6 months at -20°C/-80°C. The shelf life of lyophilized form is 12 months at -20°C/-80°C.