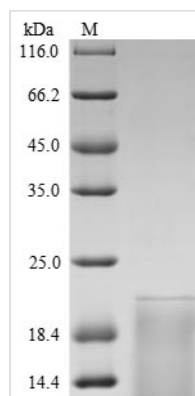




Recombinant Rat Thyrotropin subunit beta (Tshb)

Product Code	CSB-YP025130RA
Relevance	Indispensable for the control of thyroid structure and metabolism.
Abbreviation	Recombinant Rat Tshb protein
Storage	The shelf life is related to many factors, storage state, buffer ingredients, storage temperature and the stability of the protein itself. Generally, the shelf life of liquid form is 6 months at -20°C/-80°C. The shelf life of lyophilized form is 12 months at -20°C/-80°C.
Uniprot No.	P04652
Product Type	Recombinant Protein
Immunogen Species	Rattus norvegicus (Rat)
Purity	Greater than 90% as determined by SDS-PAGE.
Sequence	FCIPTEYMMYVDRRECAAYCLTINTTICAGYCMTRDINGKLFPLKYALSQDVCTY RDFTYRTVEIPGCPHHVAPYFSYPVALSCKCGKCN TDYSDCTHEAVKTN YCTK PQTFY
Research Area	Cancer
Source	Yeast
Target Names	Tshb
Protein Names	Thyroid-stimulating hormone subunit beta
Expression Region	21-132aa
Notes	Repeated freezing and thawing is not recommended. Store working aliquots at 4°C for up to one week.
Tag Info	N-terminal 6xHis-tagged and C-terminal Myc-tagged
Mol. Weight	16.4 kDa
Protein Length	Full Length of Mature Protein

Image



(Tris-Glycine gel) Discontinuous SDS-PAGE (reduced) with 5% enrichment gel and 15% separation gel.

Description

Recombinant Rat Thyrotropin subunit beta (Tshb) is a partial-length protein



expressed with an N-terminal 6xHis-tagged and C-terminal Myc-tagged in the yeast. Its expression region corresponds to 21-132aa of rat Tshb protein. Its purity was determined by SDS-PAGE and reached up to 90% and presented a molecular mass band around 18.4 kDa on the gel. This recombinant Tshb protein may be used to synthesize antibodies against Tshb or on the studies of Tshb-associated signal transduction.

Tshb is indispensable for the control of thyroid structure and metabolism. Thyroid stimulating hormone consists of two subunits, alpha and beta. The TSHB gene encodes the beta subunit. The alpha and beta subunits are bound together to produce the active form of the hormone. Mutations in this gene can result in congenital central and secondary hypothyroidism and Hashimoto's thyroiditis.

Reconstitution

We recommend that this vial be briefly centrifuged prior to opening to bring the contents to the bottom. Please reconstitute protein in deionized sterile water to a concentration of 0.1-1.0 mg/mL. We recommend to add 5-50% of glycerol (final concentration) and aliquot for long-term storage at -20°C/-80°C. Our default final concentration of glycerol is 50%. Customers could use it as reference.

Shelf Life

The shelf life is related to many factors, storage state, buffer ingredients, storage temperature and the stability of the protein itself. Generally, the shelf life of liquid form is 6 months at -20°C/-80°C. The shelf life of lyophilized form is 12 months at -20°C/-80°C.