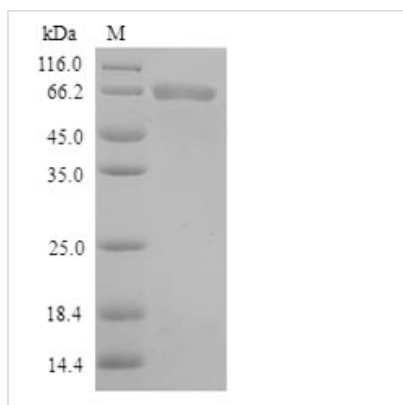




Recombinant Human Toll-like receptor 1 (TLR1), partial

Product Code	CSB-YP023599HU
Relevance	Participates in the innate immune response to microbial agents. Specifically recognizes diacylated and triacylated lipopeptides. Cooperates with TLR2 to mediate the innate immune response to bacterial lipoproteins or lipopeptides. Acts via MYD88 and TRAF6, leading to NF-kappa-B activation, cytokine secretion and the inflammatory response
Abbreviation	Recombinant Human TLR1 protein, partial
Storage	The shelf life is related to many factors, storage state, buffer ingredients, storage temperature and the stability of the protein itself. Generally, the shelf life of liquid form is 6 months at -20°C/-80°C. The shelf life of lyophilized form is 12 months at -20°C/-80°C.
Uniprot No.	Q15399
Alias	Toll/interleukin-1 receptor-like protein Short name: TIL CD_antigen: CD281
Product Type	Recombinant Protein
Purity	Greater than 90% as determined by SDS-PAGE.
Sequence	SEFLVDRSKNGLIHVPKDLSQKTTILNISQNYISELWTS DILSLSKLRILIIISHNRIQ YLDISVFKFNQELEYLDLSHNKLVKISCHPTVNLKHLDSL FNAFDALPICKEFGN MSQLKFLGLSTTHLEKSSVLPPIAHLNISKVLLVLGETYGEKEDPEGLQDFNTESL HIVFPTNKEFH FILDVSVKTVANLELSNIKCVLEDNKCSYFLSILAKLQTNPKLSN LTLNNIETT WNSFIRILQLVWHTTVWYFSISNVKLQGGQLDFRDFDYSGTSLKAL SIHQVVSDVFGFPQSYIYEIFS NMNIKNFTVSGTRMVHMLCPSKISPFLHLDFSN NLLTDTVFENC GHLTELET LILQMNQLKELSKIAEMTTQMKSLQQLDISQNSVS YDEKKGDCSWTKSLLSLNMSSNILTDTIFRCLPPRIKVL DLHSN KIKSIPKQVVK LEALQELNVA FNSLTDLP GCGSFSSLSVLIIDHNSVSHPSADFFQSCQKMRSIK AGDNPFQCTCELG EFKVKNIDQVSSEVLEGWPDSYKCDYPESYRG TLLKDFHM SELSCNIT
Source	Yeast
Protein Names	Recommended name: Toll-like receptor 1 Alternative name(s): Toll/interleukin-1 receptor-like protein Short name= TIL CD_antigen= CD281
Expression Region	25-580aa
Notes	Repeated freezing and thawing is not recommended. Store working aliquots at 4°C for up to one week.
Tag Info	N-terminal 6xHis-tagged
Mol. Weight	65.2kDa
Protein Length	Partial
Image	



(Tris-Glycine gel) Discontinuous SDS-PAGE (reduced) with 5% enrichment gel and 15% separation gel.

Reconstitution

We recommend that this vial be briefly centrifuged prior to opening to bring the contents to the bottom. Please reconstitute protein in deionized sterile water to a concentration of 0.1-1.0 mg/mL. We recommend to add 5-50% of glycerol (final concentration) and aliquot for long-term storage at -20°C/-80°C. Our default final concentration of glycerol is 50%. Customers could use it as reference.

Shelf Life

The shelf life is related to many factors, storage state, buffer ingredients, storage temperature and the stability of the protein itself. Generally, the shelf life of liquid form is 6 months at -20°C/-80°C. The shelf life of lyophilized form is 12 months at -20°C/-80°C.