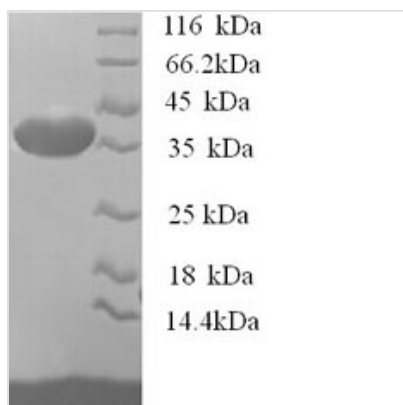


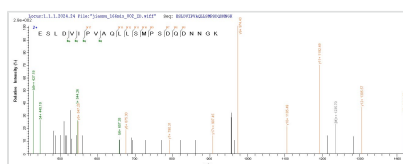


# Recombinant Mouse Osteopontin (Spp1), partial

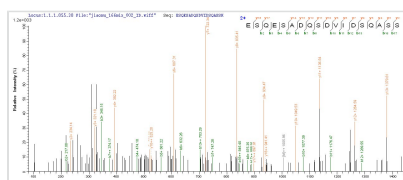
<b>Product Code</b>	CSB-YP022603MO
<b>Relevance</b>	Binds tightly to hydroxyapatite. Appears to form an integral part of the mineralized matrix. Probably important to cell-matrix interaction. Acts as a cytokine involved in enhancing production of interferon-gamma and interleukin-12 and reducing production of interleukin-10 and is essential in the pathway that leads to type I immunity.
<b>Abbreviation</b>	Recombinant Mouse Spp1 protein, partial
<b>Storage</b>	The shelf life is related to many factors, storage state, buffer ingredients, storage temperature and the stability of the protein itself. Generally, the shelf life of liquid form is 6 months at -20°C/-80°C. The shelf life of lyophilized form is 12 months at -20°C/-80°C.
<b>Uniprot No.</b>	P10923
<b>Alias</b>	2AR Bone sialoprotein 1 Calcium oxalate crystal growth inhibitor protein; Early T-lymphocyte activation 1 protein; Minopontin; Secreted phosphoprotein 1 ; SPP-1
<b>Product Type</b>	Recombinant Protein
<b>Immunogen Species</b>	Mus musculus (Mouse)
<b>Purity</b>	Greater than 90% as determined by SDS-PAGE.
<b>Sequence</b>	LPVKVTDSGSSEEKLYSLHPDPIATWLVPDPSQKQNLLAPQNAVSSEEKDDFK QETLPSNSNESHDMDDDDDDDDGGDHAESDSVDSDESDESHHSDSD ETVTASTQADTFTPIVPTVDVPNGRGLSLAYGLRSKRSFQVSDEQYPDATDE DLTSHMKSGESKESLDVIPVAQLLSMPDQDNNKGSHESQLDEPSLETHR LEHSKESQESADQSDVIDSQASSKASLEHQSHKFHSHKDKLVLPKSKEDDR YLKFRISHELESSS
<b>Research Area</b>	Others
<b>Source</b>	Yeast
<b>Target Names</b>	Spp1
<b>Protein Names</b>	Recommended name: Osteopontin Alternative name(s): 2AR Bone sialoprotein 1 Calcium oxalate crystal growth inhibitor protein Early T-lymphocyte activation 1 protein Minopontin Secreted phosphoprotein 1 Short name= SPP-1
<b>Expression Region</b>	17-290aa
<b>Notes</b>	Repeated freezing and thawing is not recommended. Store working aliquots at 4°C for up to one week.
<b>Tag Info</b>	N-terminal 6xHis-tagged
<b>Mol. Weight</b>	32.3kDa
<b>Protein Length</b>	Partial
<b>Image</b>	



(Tris-Glycine gel) Discontinuous SDS-PAGE (reduced) with 5% enrichment gel and 15% separation gel.



Based on the SEQUEST from database of Yeast host and target protein, the LC-MS/MS Analysis result of CSB-YP022603MO could indicate that this peptide derived from Yeast-expressed Mus musculus (Mouse) Spp1.



Based on the SEQUEST from database of Yeast host and target protein, the LC-MS/MS Analysis result of CSB-YP022603MO could indicate that this peptide derived from Yeast-expressed Mus musculus (Mouse) Spp1.

## Description

To achieve the expression of the recombinant Mouse Spp1 protein in Yeast cells, a DNA fragment encoding the Mouse Spp1 protein (17-290aa) is inserted into a plasmid vector, which is then transferred to Yeast cells. After screening positive cells, they are cultured and induced to generate the Spp1 protein. A N-terminal 6xHis tag is attached to the protein. Cells are lysed to collect the recombinant Mouse Spp1 protein, which is purified through affinity purification and then identified using SDS-PAGE and subsequent staining of the gel with Coomassie Brilliant Blue. The purity of the obtained recombinant Mouse Spp1 protein is over 90%.

## Reconstitution

We recommend that this vial be briefly centrifuged prior to opening to bring the contents to the bottom. Please reconstitute protein in deionized sterile water to a concentration of 0.1-1.0 mg/mL. We recommend to add 5-50% of glycerol (final concentration) and aliquot for long-term storage at -20°C/-80°C. Our default final concentration of glycerol is 50%. Customers could use it as reference.

## Shelf Life

The shelf life is related to many factors, storage state, buffer ingredients, storage temperature and the stability of the protein itself. Generally, the shelf life of liquid form is 6 months at -20°C/-80°C. The shelf life of lyophilized form is 12 months at -20°C/-80°C.