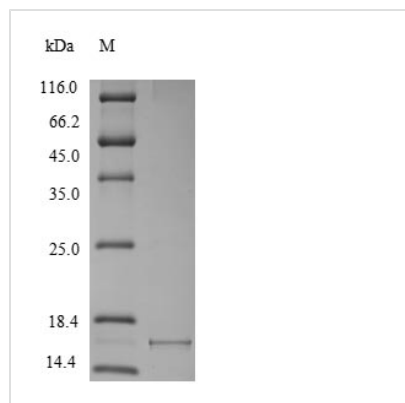




Recombinant Macaca fascicularis Alpha-synuclein (SNCA)

Product Code	CSB-YP021912MOV
Relevance	May be involved in the regulation of dopamine release and transport.
Abbreviation	Recombinant Cynomolgus monkey SNCA protein
Storage	The shelf life is related to many factors, storage state, buffer ingredients, storage temperature and the stability of the protein itself. Generally, the shelf life of liquid form is 6 months at -20°C/-80°C. The shelf life of lyophilized form is 12 months at -20°C/-80°C.
Uniprot No.	P61142
Product Type	Recombinant Protein
Immunogen Species	Macaca fascicularis (Crab-eating macaque) (Cynomolgus monkey)
Purity	Greater than 90% as determined by SDS-PAGE.
Sequence	MDVFMKGLSKAKEGVVAAAEKTKQGVAEAAAGKTKEGVLYVGSKTKEGVVHG VATVAEKTKEQVTNVGGAVVTGVTAVAQKTVEGAGSIAAATGFIKKDQLGKNE EGAPQEGILQDMPVDPDNEAYEMPSEEGYQDYEPEA
Research Area	Others
Source	Yeast
Target Names	SNCA
Protein Names	Recommended name: Alpha-synuclein
Expression Region	1-140aa
Notes	Repeated freezing and thawing is not recommended. Store working aliquots at 4°C for up to one week.
Tag Info	N-terminal 6xHis-tagged
Mol. Weight	16.5kDa
Protein Length	Full Length

Image



(Tris-Glycine gel) Discontinuous SDS-PAGE (reduced) with 5% enrichment gel and 15% separation gel.



Description

The DNA fragment encoding the 1-140aa of the *Macaca fascicularis* SNCA protein was fused with N-terminal 6xHis tag gene and then was inserted into the expression vector, which was subsequently transfected into the yeast cells for expression. The resulting product was further purified to obtain the recombinant *Macaca fascicularis* SNCA protein. The purity of this recombinant SNCA protein is greater than 90% assessed by BandsScan software analysis combined with SDS-PAGE. This recombinant SNCA protein showed a band on the gel with a molecular weight of approximately 17 kDa.

In light of recent discoveries, researchers demonstrated that genetic triplication of the SNCA locus causes Parkinson disease. Another evidence discovered that the inhibition of SNCA enhances α ?synuclein in Parkinson's disease. SNCA is determined as one of susceptibility genes for Parkinson's disease. Albeit less is known about the mechanism of SNCA, SNCA is widely found to manipulate the mobility of synaptic vesicles. This regulation process is possible to disrupt the synaptic vesicle recycling and neurotransmitter release.

Reconstitution

We recommend that this vial be briefly centrifuged prior to opening to bring the contents to the bottom. Please reconstitute protein in deionized sterile water to a concentration of 0.1-1.0 mg/mL. We recommend to add 5-50% of glycerol (final concentration) and aliquot for long-term storage at -20°C/-80°C. Our default final concentration of glycerol is 50%. Customers could use it as reference.

Shelf Life

The shelf life is related to many factors, storage state, buffer ingredients, storage temperature and the stability of the protein itself. Generally, the shelf life of liquid form is 6 months at -20°C/-80°C. The shelf life of lyophilized form is 12 months at -20°C/-80°C.